

Southside & London Area Development Plan Updates

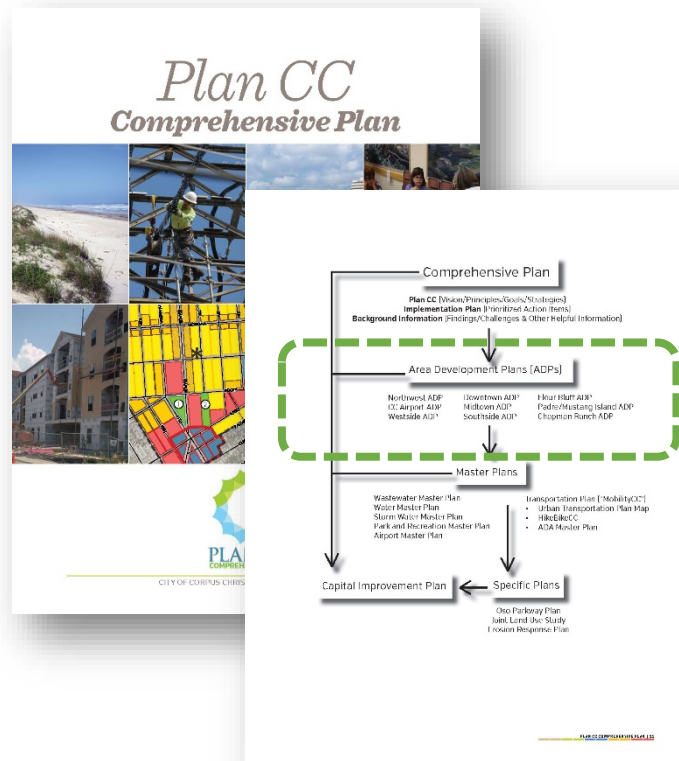


Planning Commission
December 18, 2019



Area Development Plans

- ❑ Area Development Plans (ADP) are an initiative of the Plan CC Comprehensive Plan
- ❑ An ADP goes into more detail about future development of each area
- ❑ ADPs have been in place for several years and are in the process of being updated







Timeline of Events and Activities





Engagement Process

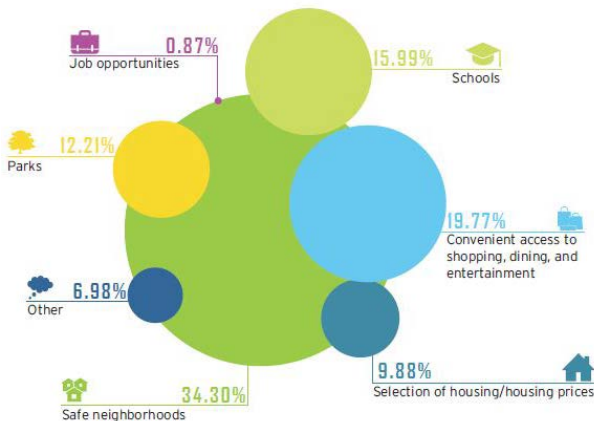




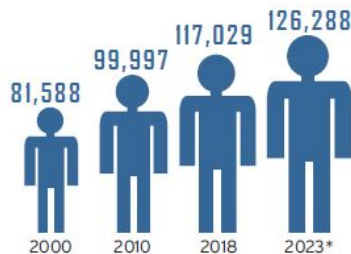
Introduction

- ❑ Demographics
- ❑ Online Survey Results
- ❑ Community Open House Input

WHAT IS YOUR FAVORITE THING ABOUT THE SOUTHSIDE AREA?

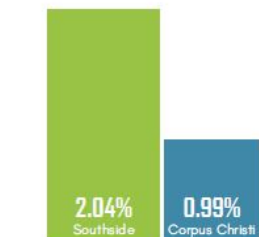


POPULATION¹



Population Growth by Year

*Projected Population



Average Annual Growth Rate 2000-2018

MY FAVORITE PART ABOUT SOUTHSIDE IS...



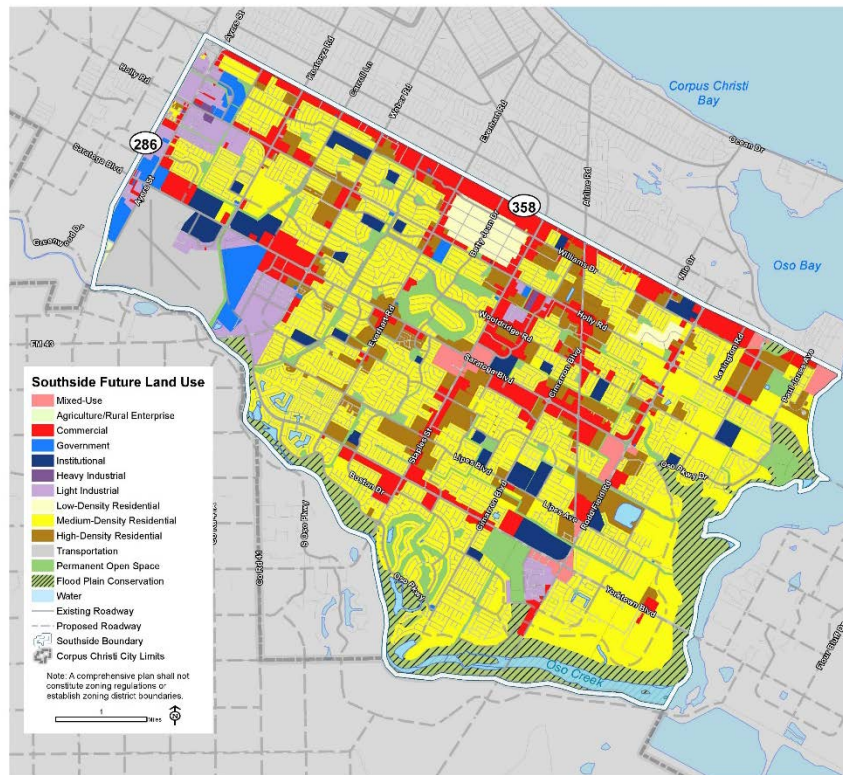
HOW CAN WE ENSURE OUR NEIGHBORHOODS THRIVE?





Future Land Use Map - Southside

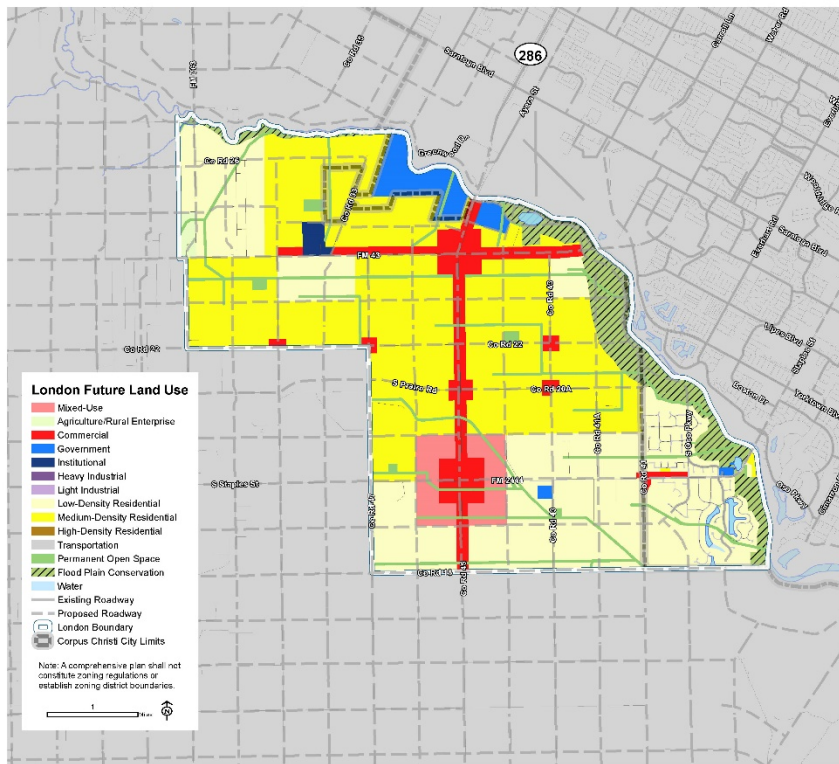
LAND USE	ACRES	PERCENTAGE
Mixed-Use	254.5	1.3%
Agriculture/ Rural Enterprise	6.8	0.0%
Commercial	1967.8	10.1%
Government	349.8	1.8%
Institutional	662.2	3.4%
Heavy Industrial	24.5	0.1%
Light Industrial	690.7	3.6%
Low-Density Residential	280.3	1.4%
Medium-Density Residential	6997.3	36.0%
High-Density Residential	1506.3	7.8%
Transportation	3560.1	18.3%
Permanent Open Space	1203.0	6.2%
Flood Plain Conservation	1716.0	8.8%
Water	208.7	1.1%
Total	19,428.0	100.0%





Future Land Use Map - London

LAND USE	ACRES	PERCENTAGE
Mixed-Use	399.5	3.2%
Agriculture/ Rural Enterprise	55.0	0.4%
Commercial	845.0	6.7%
Government	367.7	2.9%
Institutional	63.4	0.5%
Low-Density Residential	3,878.0	30.8%
Medium-Density Residential	5,125.6	40.8%
Transportation	109.9	0.9%
Permanent Open Space	684.5	5.4%
Flood Plain Conservation	995.1	7.9%
Water	47.6	0.4%
Total	12,571.3	100.0%





Vision Themes - Southside

CELEBRATE OUR SAFE, FAMILY-ORIENTED NEIGHBORHOODS





Vision Themes - London

PROMOTE SUSTAINABLE GROWTH





Vision Themes – Southside & London

PROMOTE THE OSO CREEK AND BAY AS A COMMUNITY AMENITY





Policy Initiatives - Southside

POLICY INITIATIVES	VISION THEMES			
	CELEBRATE OUR SAFE, FAMILY-ORIENTED NEIGHBORHOODS	ENHANCE PARKS AND TRAILS	IMPROVE TRANSPORTATION CONDITIONS	PROMOTE THE OSO CREEK AND BAY AS A COMMUNITY AMENITY
Create safe, attractive, and efficient transportation corridors.	✓	✓	✓	
Improve pedestrian, bicycle, and vehicular connectivity and safety.	✓	✓	✓	
Expand and improve infrastructure and city facilities as population and demand for services grow.		✓	✓	✓
Utilize the Oso Creek and Bay for sustainable recreation and ecotourism.	✓	✓		✓
Promote land development that enhances the character and opportunities in the Southside.	✓			
Focus park enhancement efforts on existing park facilities.		✓		
Reduce and improve stormwater runoff.				✓



Policy Initiatives - London

POLICY INITIATIVES	VISION THEMES		
	CELEBRATE OUR COMMUNITY CHARACTER	PROMOTE SUSTAINABLE GROWTH	PROMOTE THE OSO CREEK AND BAY AS A COMMUNITY AMENITY
Expand and improve infrastructure and city facilities.		✓	✓
Promote land development that enhances the character and opportunities in London.	✓	✓	✓
Provide outdoor recreation amenities.	✓	✓	✓
Utilize the Oso Creek and Bay for sustainable recreation and ecotourism.	✓	✓	✓
Reduce and improve stormwater runoff.		✓	✓



Public Investment Initiatives

SHORT-TERM (1-5 YEARS)

REGIONAL TRANSPORTATION AUTHORITY	
R1	Del Mar Southside Campus Bus Stop
HEALTH AND SAFETY IMPROVEMENTS	
H1	Fire Station #17 - Add Ambulance
H2	J.C. Elliott Landfill Improvements
PARKS AND TRAILS	
P1	Bill Witt Park Master Plan (underway)
P2	Bill Witt Park Improvements (underway)
P3	St. Andrews Neighborhood Park Improvements
P4	Paul Jones Sports Facilities - Drainage Improvements (underway)
P5	OSO Bay Wetlands Preserve Phase III - Administrative Offices Building
P6	Crossgate Trail
P7	Schanen Hike & Bike Trail Phase III (underway)
P8	Oso Creek Trail - Planning*
STREET IMPROVEMENTS	
S1	SH 358 Ramp Construction (TXDOT)
S2	SPID Ramp Reversal (TXDOT)
S3	Pedestrian Connectivity - Extend Sidewalk
S4	Yorktown Boulevard Street Improvements
S5	Rodd Field Road Expansion (underway)
S6	Everhart Road Street Improvements (underway)
S7	Slough Road Street Improvements (underway)
S8	Holly Road Street Improvements (underway)
S9	Lipes Boulevard Street Improvements (underway)
S10	Woodridge Drive Street Improvements
S11	Rodd Field Road Extension
S12	Holly Road Street Improvements
S13	Safety Steel Dr. Extension
S14	Pavo Real Street Connection
UTILITY/INFRASTRUCTURE	
U1	Storm Water Master Plan*
U2	Yorktown Boulevard Water Line Extension
U3	Williams Lift Station Force Main (Line A)
U4	Oso WWTP Improvements
U5	Greenwood WWTP Improvements

* Projects Not Mapped





Next Steps

- ☐ Finalize draft plans based on community input
- ☐ Advisory Committee
- ☐ Presentations to Planning Commission and City Council



www.cctexas.com/southsideandlondon