



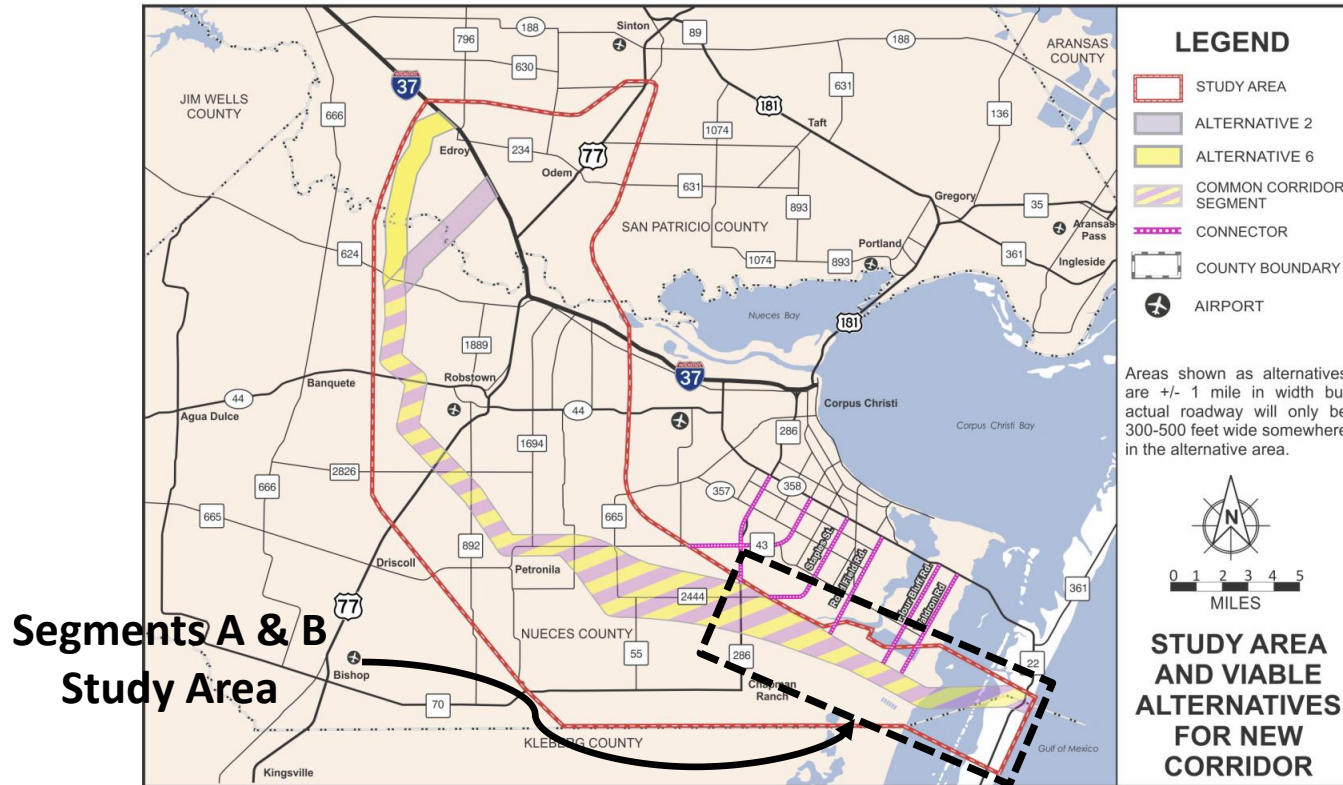
CC MPO Interlocal Agreement Regional Parkway Planning and Environmental Linkage Study



Council Presentation
June 9, 2015



Regional Parkway Viable Alternative Map





Project Background



- The Regional Parkway Planning and Environmental Linkage (PEL) Study is joint project with the City, MPO and TxDOT to consider providing alternative connectivity between I-37 and Padre Island.
- This PEL study (project) evaluates the first two segments (A & B) from State Highway 286 to Park Road 22.
- The Regional Parkway Mobility Corridor Feasibility Study, completed in 2013, evaluated ten potential corridors and determined that the project was justified and feasible if constructed in segments (phases) of independent utility.
- The MPO is leading this project and has established an Advance Funding Agreement with TxDOT. MPO will contract with the selected consultant upon establishing the Interlocal between MPO and the City. Matching funding is MPO/State (80%) and City (20%) plus administrative fees.



Project Scope



The PEL study evaluates the first two segments to identify the transportation needs, stakeholders, defines the corridor with potential impacts and mitigation options. This project also provides performance measures and serves as the interim step to a full National Environmental Policy Act (NEPA) Review.

- Total cost for the project is \$863,068
 - City's 20% share with administrative fees is \$233,028; funding is from the Bond 2014 TxDOT Participation \$2.5 M
 - MPO's 80% share is \$690,454; funding from the TxDOT Category 7
- HDR Inc. was selected as the project consultant by MPO in coordination with the City through the Houston-Galveston Area Council PlanSource process in December, 2014.



Project Scope



QUESTIONS?



Regional Parkway Concept



Rendering of the Parkway Concept