

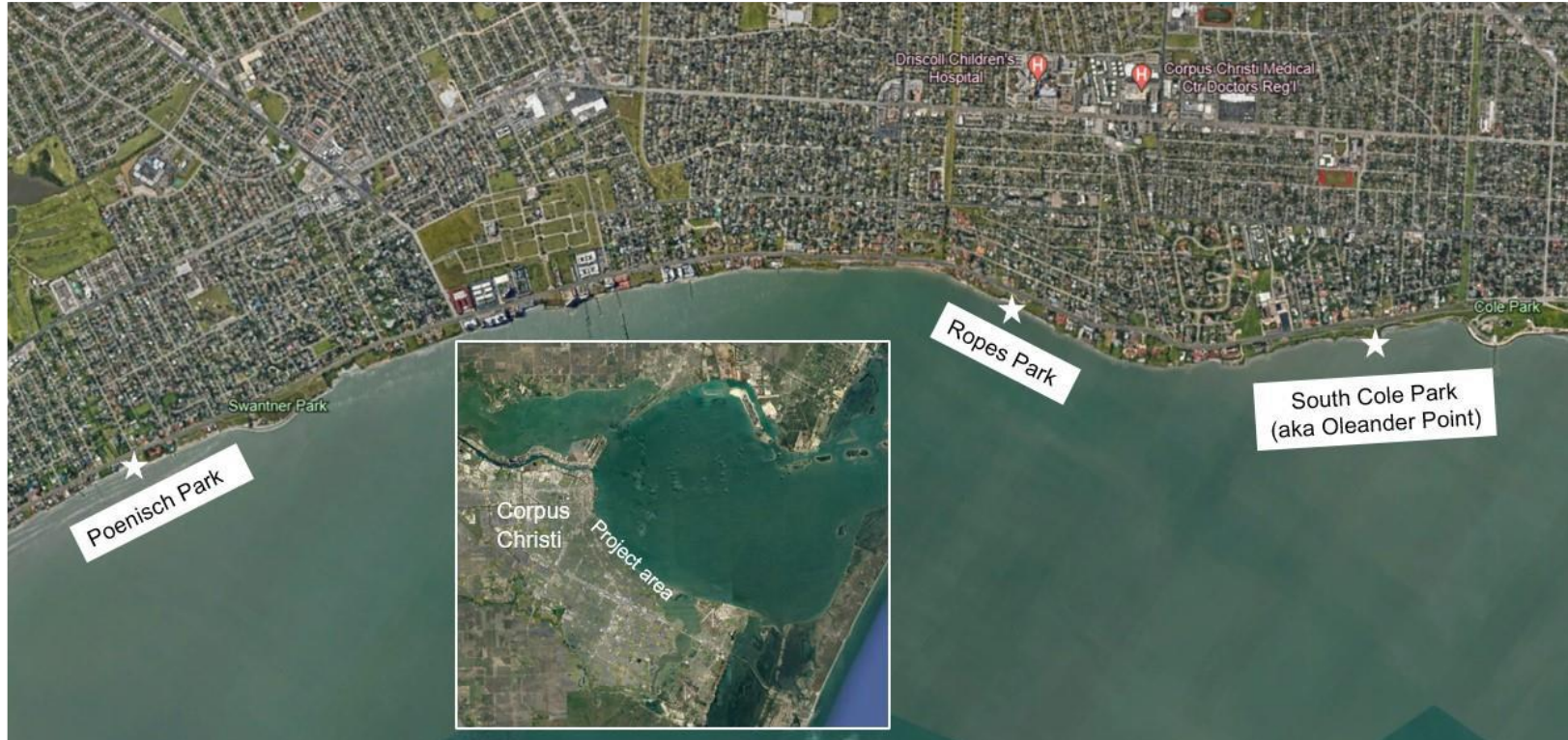


Cooperation Agreement with TGLO to Mitigate Shoreline Erosion of Parks along the Corpus Christi Bay

City Council
December 03, 2024



Areas of Focus





Park Visits

October 2023 through September 2024

| | | |
|---------------|----------------|------------------|
| Cole Park | 595,000 visits | 276,000 visitors |
| Ropes Park | 41,600 visits | 27,900 visitors |
| Poenisch Park | 19,100 visits | 10,400 visitors |



Background



- The prevailing erosion of each park has been exacerbated by high water/waves during the 2020 Hurricane Season.
- Historical erosion has reduced the footprint of each park & reduced park safety.
- These parks are high-profile areas with heavy tourist visitation & provide bayfront viewing & bay access.
- The parks also function as neighborhood parks that are easily accessible by active modes of transportation (e.g., walking, bikes, scooters).
- These parks are much closer to adjacent neighborhoods than Gulf beaches, making them a lower cost option for water activities.



Project Goals



- Reduce bluff erosion to preserve existing park footprint
- Stabilize/enhance pocket beaches to provide safe public access
- Apply hybrid living, shoreline stabilization techniques to maximize environmental benefits – Enhance/mimic natural coastal features (e.g., headlands) to reduce impact of waves/surge
- Protect park acreage & infrastructure threatened by continued erosion
- Increase habitat for organisms & algae.



PHASE 1



- **TASK 1 - DATA COLLECTION**
 - Will be to characterize existing site conditions to support development of shoreline protection concepts & associated alternatives analysis.
 - **TASK 2 - PRELIMINARY ALTERNATIVES ANALYSIS**
 - Will characterize existing conditions, develop potential project concepts & compare/contrast concepts in terms of cost, resiliency, regulatory constraints & aesthetics.
-



PHASE 1 TASKS



- Surveying
- Geotechnical Investigation
- Topographic/Bathymetric Surveying
- Property Boundary Surveying
- Subsurface Utility Investigation
- Environmental/Habitat Delineations
- Site Characterizations
- Develop Shoreline Protection Concepts
- Compare Shoreline Protection Concepts
- Cost Estimates
- Graphic Renderings
- Alternatives Analysis Report
- Coastal Boundary Surveys
- USACE Permitting



Cooperation Agreement



- Tasks 1 & 2 are scheduled to be completed within 270 days from the issuance of the notice to proceed to HDR.
 - The term of this agreement will end on August 31, 2029.
 - Maximum term length was assigned to allow for unknowns like delays in contract execution or following the dissipation of other storm events that may develop.
 - The work order between TGLO & HDR, Inc. cannot be executed until this Agreement is approved
 - Reimbursement is typically conducted on a monthly basis.
-



BUDGET



| PROJECT COSTS | | |
|---|-----------------------|----------------|
| CONTRACTUAL | AMOUNT | |
| Phase 1 (Tasks 1 & 2) | \$2,095,000.00 | |
| TOTAL PROJECT COST NOT TO EXCEED | \$2,095,000.00 | |
| COST SHARING SUMMARY | | |
| | AMOUNT | PERCENT |
| GLO Funds to Partner (City) | \$0.00 | 0% |
| GLO Funds (CEPRA) to HDR, Inc. | \$1,275,000.00 | 60% |
| City Match Funds | \$820,000.00 | 40% |
| TOTAL PROJECT CONTRIBUTIONS | \$2,095,000.00 | 100% |



Recommendation



Staff recommends to approve the Ordinance authorizing a Coastal Erosion Planning and Response Act Project Cooperation Agreement with the Texas General Land Office and a matching grant allocation of \$820,000.00 to mitigate shoreline erosion of public parks along the Corpus Christi Bay; appropriating \$820,000.00 from the unreserved balance of the Type B Fund; and amending the FY 2025 Operating Budget. (6 votes required)