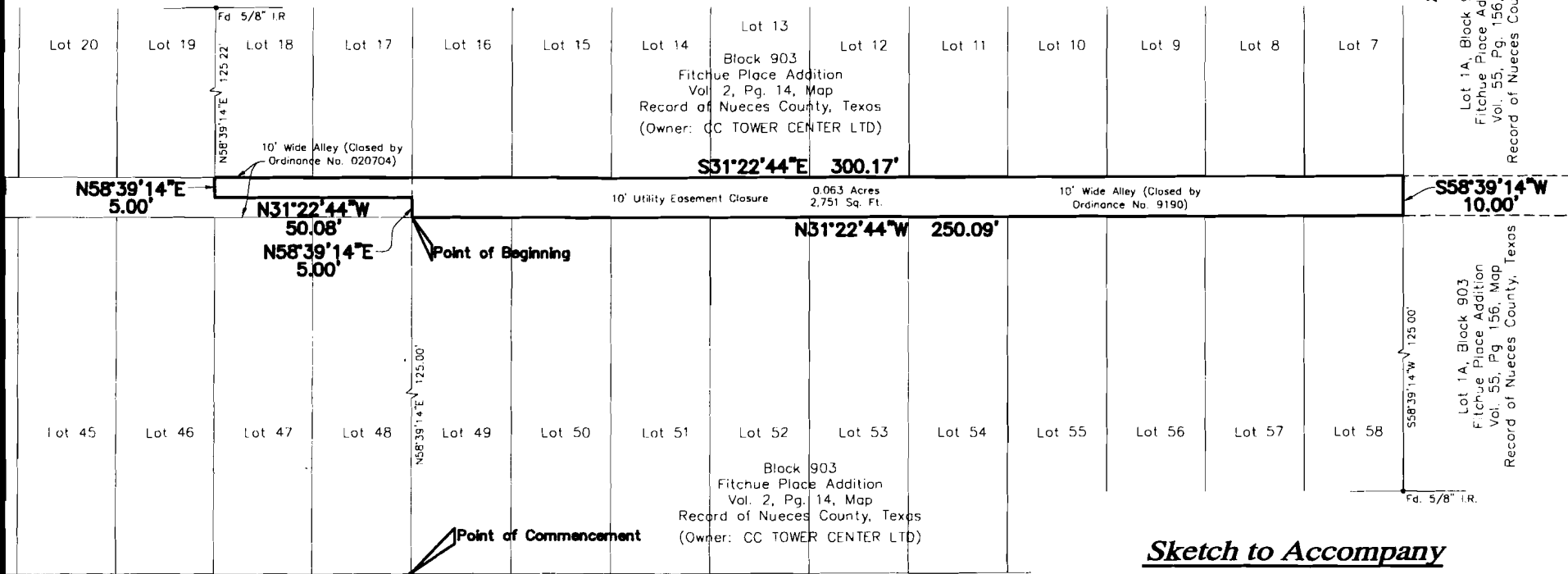


South Alameda Street



Sketch to Accompany

FIELDNOTES for a 10 foot wide utility easement closure over and across a Closed Alley, City Ordinance #9190 and Fitchue Place Addition, a map of which is recorded in Volume 2, Page 14, Map Records of Nueces County, Texas.

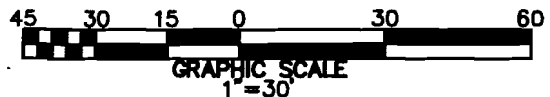
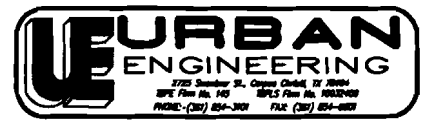


EXHIBIT B



DATE: JAN. 9, 2014
 SCALE: 1"=30'
 JOB NO.: 42868.B4.00
 SHEET: 1 OF 1
 DRAWN BY: RLG