

City of Corpus Christi Office Emergency Management



Emergency Operations Center

A central location where government can provide inter-agency coordination and executive decision making for managing disaster response and recovery.



Levels of Activation

- **Level 1 (Monitor)** - EOC staff, PIO, Operations Chief, Department staff, as needed.(Flood, severe storms, fire, escalating incident)
- **Level 2 (Partial)** - EOC staff, PIO, Section Chiefs, Limited activation of other EOC staff. Multiple sites, several agencies, Major scheduled event, limited evacuations, resource support required.
- **Level 3 (Full)** - EOC Assigned staff . (Major event, Full Activation (All Agencies)



Emergency Readiness Levels

- The following readiness levels will be assigned:
 - **Level 4: Normal Conditions**
 - The normal operations of government are not affected.
 - Emergency incidents not related to hurricanes occur and local officials are notified.
 - One or more departments or agencies respond to handle the incident; an incident command post may be established.
 - **Level 3: Increased Readiness**
 - A situation that presents a greater potential threat than level but poses no immediate threat to life and property.
 - May be appropriate when a tropical weather system has developed that has the potential to impact the local area.
 - May include regular situation monitoring, a review of plans and resource status, determining staff availability, and placing personnel on-call.



Emergency Readiness Levels

– Level 2: High Readiness

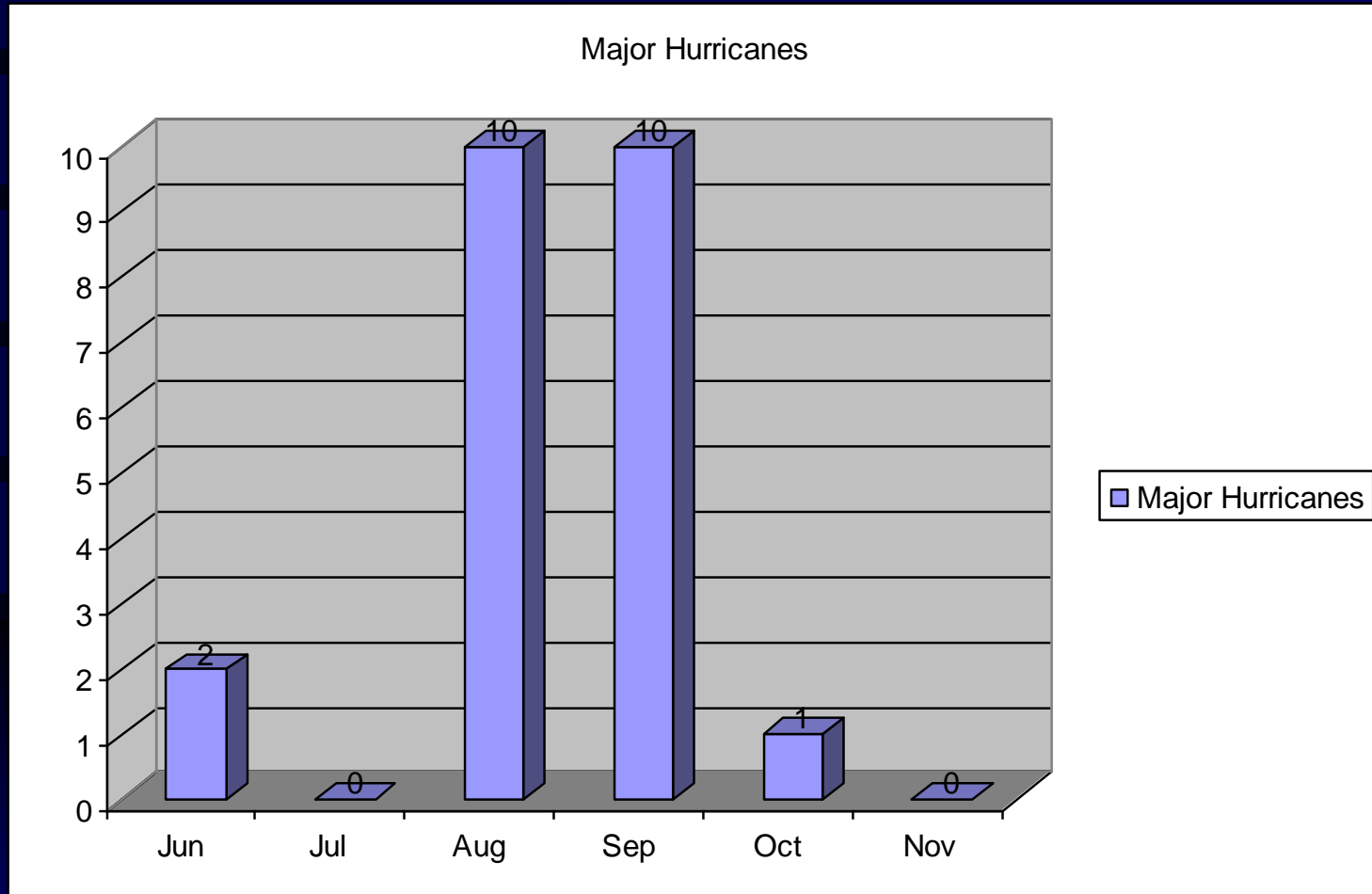
- A hurricane situation with significant potential and probability of causing loss of life and property.
- Will require some degree of warning to the public.
- A tropical weather system that may impact the local area within 72 hours.

– Level 1: Maximum Readiness

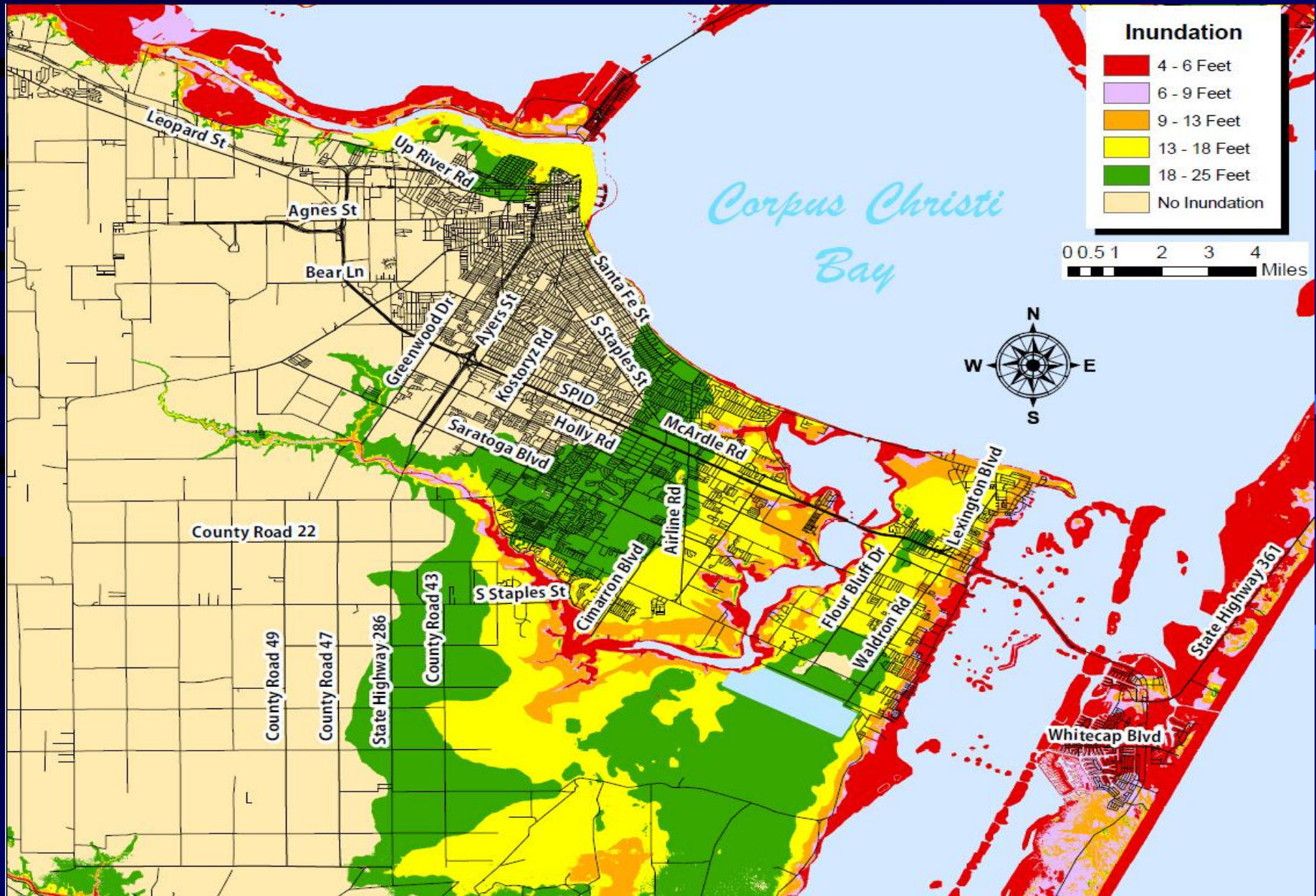
- A situation in which hazardous conditions due to a hurricane are imminent.
- Actions are generated by severe weather warning information issued by the NWS combined with factors making the event more imminent.
- The evacuation decision period is nearing for an approaching tropical weather system that may impact the local area.



Texas Major Hurricane Strikes by Month



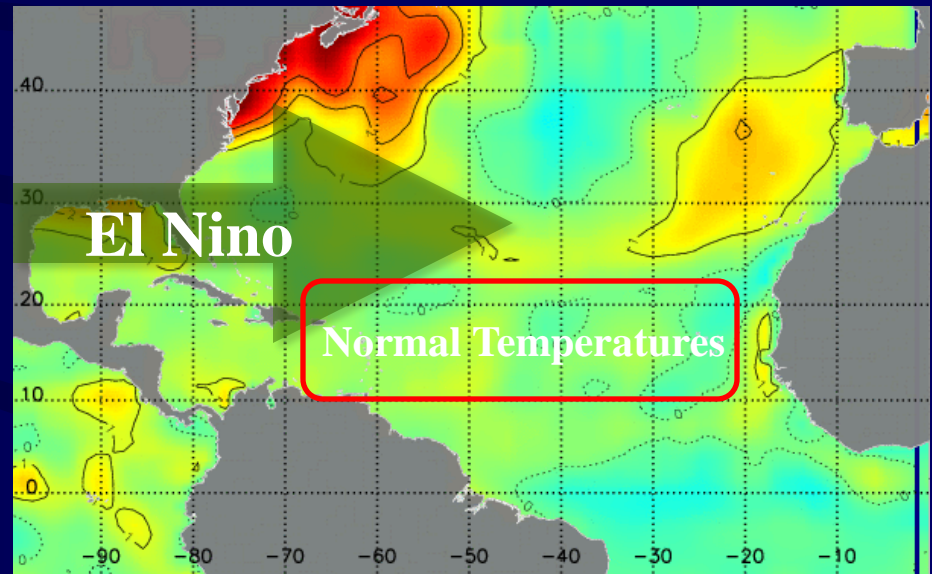
Inundation



2012 Hurricane Outlook

» Near Normal Season
Expected...

9-15 Named Storms
4-8 Hurricanes
1-3 Major Hurricane



It only takes ONE!

Questions



**City of Corpus Christi
Office Emergency
Management**