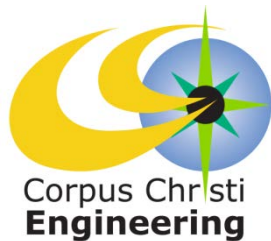




Rincon Bayou Diversion

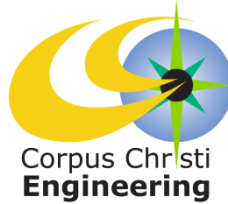
Nueces Bay System Salinity and Freshwater Inflow
Monitoring 2013-2014



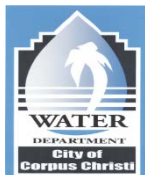
Council Presentation
October 29, 2013



Project Scope

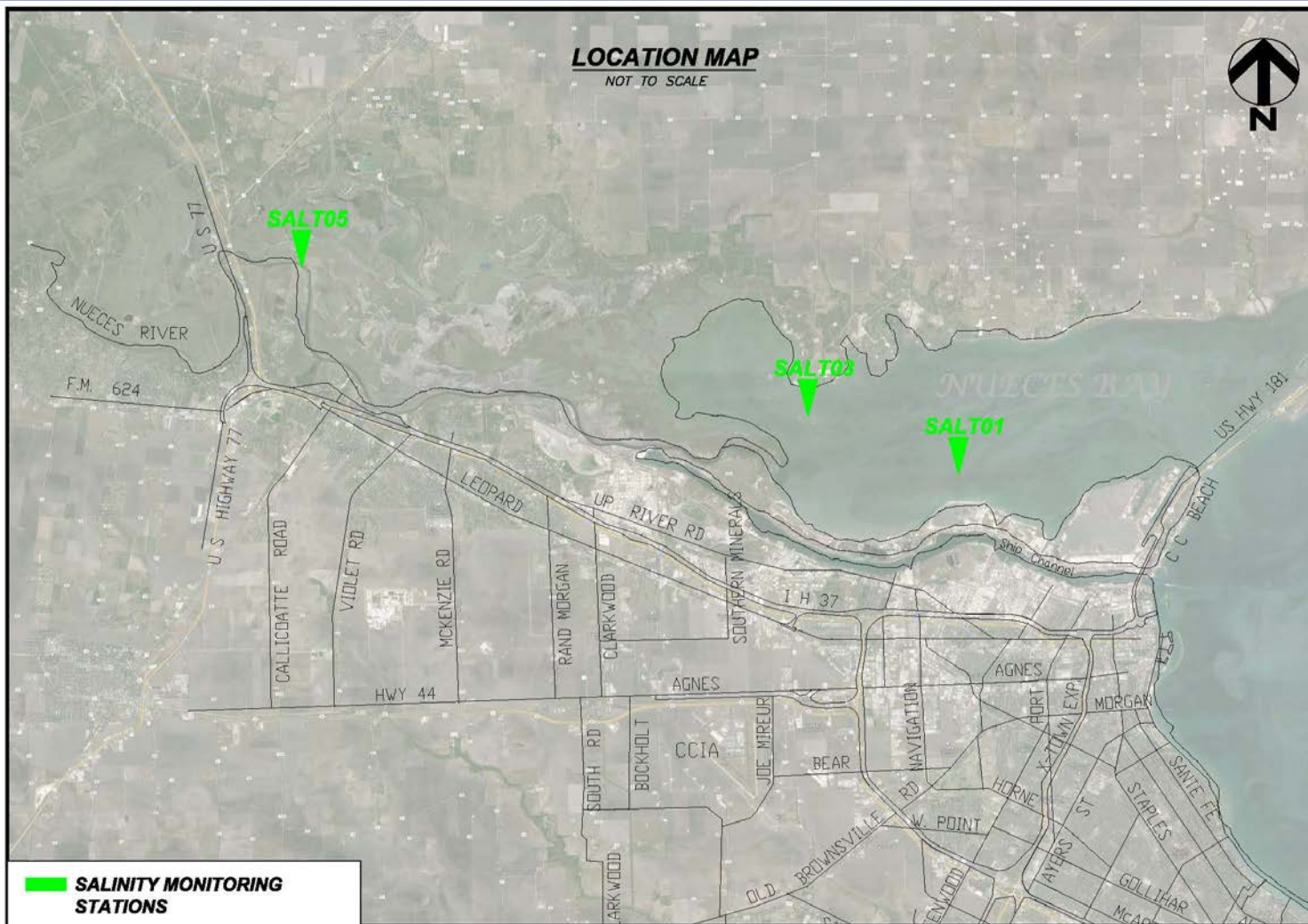
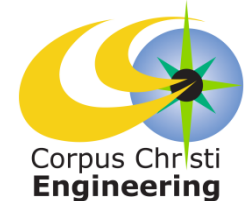


- Ongoing project originating in the Fall of 1991
- Maintenance and real-time data collection salinity monitoring stations in Nueces Bay (2) in the Nueces River (1).
- Data is available to the public at <http://www.cbi.tamucc.edu/Nueces-BayWater-Quality-Monitoring>
- Salinity reduction data is used to determine flow freshwater releases from the Wesley Seale Dam into Nueces Bay Estuary to satisfy requirements put forth in the Texas Natural Resource Conservation Commission agreed order (found at: http://www.nueces-ra.org/CP/CITY/pdfs/agreed_order.pdf)
- Salinity maintenance and data collection performed by the Conrad Blucher Institute for Surveying and Science at Texas A&M University – Corpus Christi.
- Passthru Reports provide to the public the Nueces River Authority's website: <http://www.nueces-ra.org/CP/CITY/passthru/index.php>
- Salinity relief values are available at: <http://lighthouse.tamucc.edu/salrel>

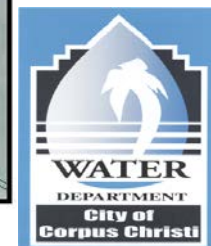




Project Scope

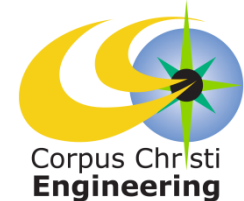


NUECES BAY SYSTEM SALINITY AND FRESHWATER INFLOW MONITORING 2013 - 2014





Project Schedule



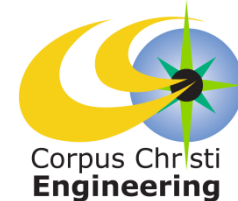
2013		2014								
Nov	Dec	Jan	Feb	Mar	Apr	May	Jun	Jul	Aug	Sep
Monitoring Services										

Project Service: November 15, 2013 to September 30, 2014





Project Budget



PROJECT BUDGET		
Rincon Bayou Diversion Project		
Nueces Bay System		
Salinity and Freshwater Inflow Monitoring 2013-2014		
FUNDS AVAILABLE:		
Water Operating.....		\$101,228.00
FUNDS REQUIRED:		
Original (TAMU-CC, Conrad Blucher Institute).....		94,605.00
Reimbursements		6,623.00
TOTAL		\$101,228.00
PROJECT BUDGET BALANCE		
		\$0.00

