



# Zoning Case #1114-06

## Ronald S. Browning

**From:** "FR" Farm Rural District

**To:** "CG-2" General Commercial District

Planning Commission  
Presentation  
Nov. 19, 2014

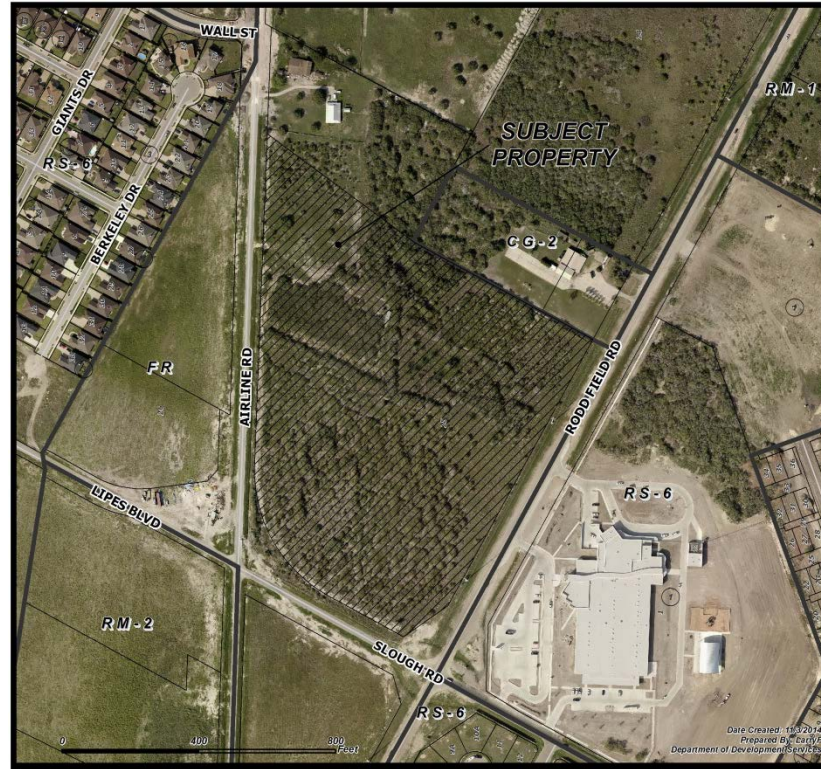


# Aerial Overview



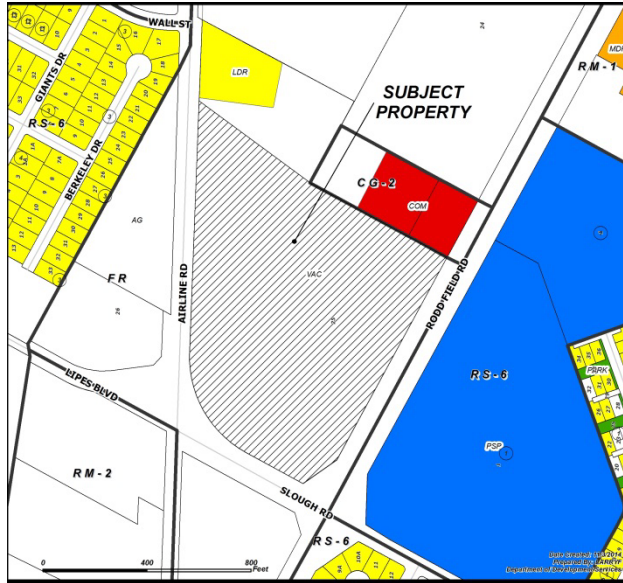


# Aerial

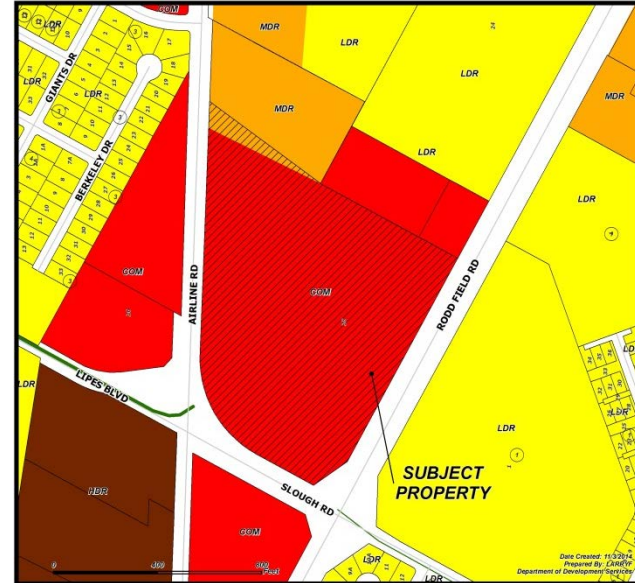




## Existing Land Use

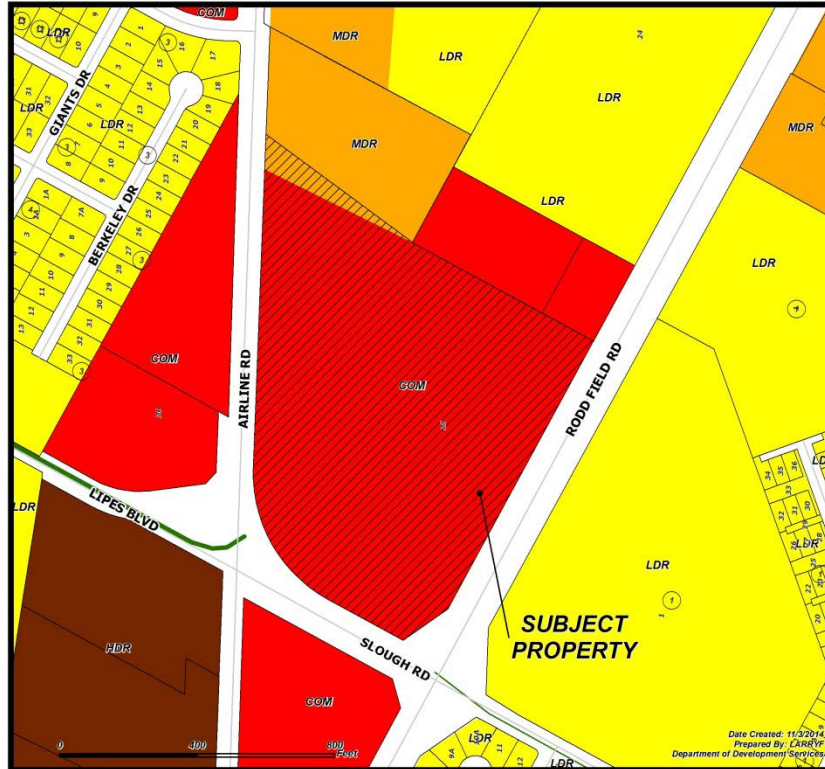


## Future Land Use





# Future Land Use Map





# Pictures

## Subject Property



Southeast on Airline, near Lipes



Northwest on Airline, near Lipes





# Pictures

---

North on Rodd Field



East of Rodd Field









# Staff Recommendation

---

## **Approval of the** “CG-2” General Commercial District