

# Mary Rhodes Pipeline Phase 2 Status Update



Council Presentation  
February 17, 2015



# Presentation Summary

---

- Project Scope
    - Pipeline and Pump Station/Sedimentation Basin
  - Project Map
  - Pipeline Contracts
    - Contract Award and Status
  - Pump Station/Sedimentation Basin
    - Contract Award and Status
  - Overall Schedule
  - Project Budget
  - Construction Change Orders
  - Questions
-



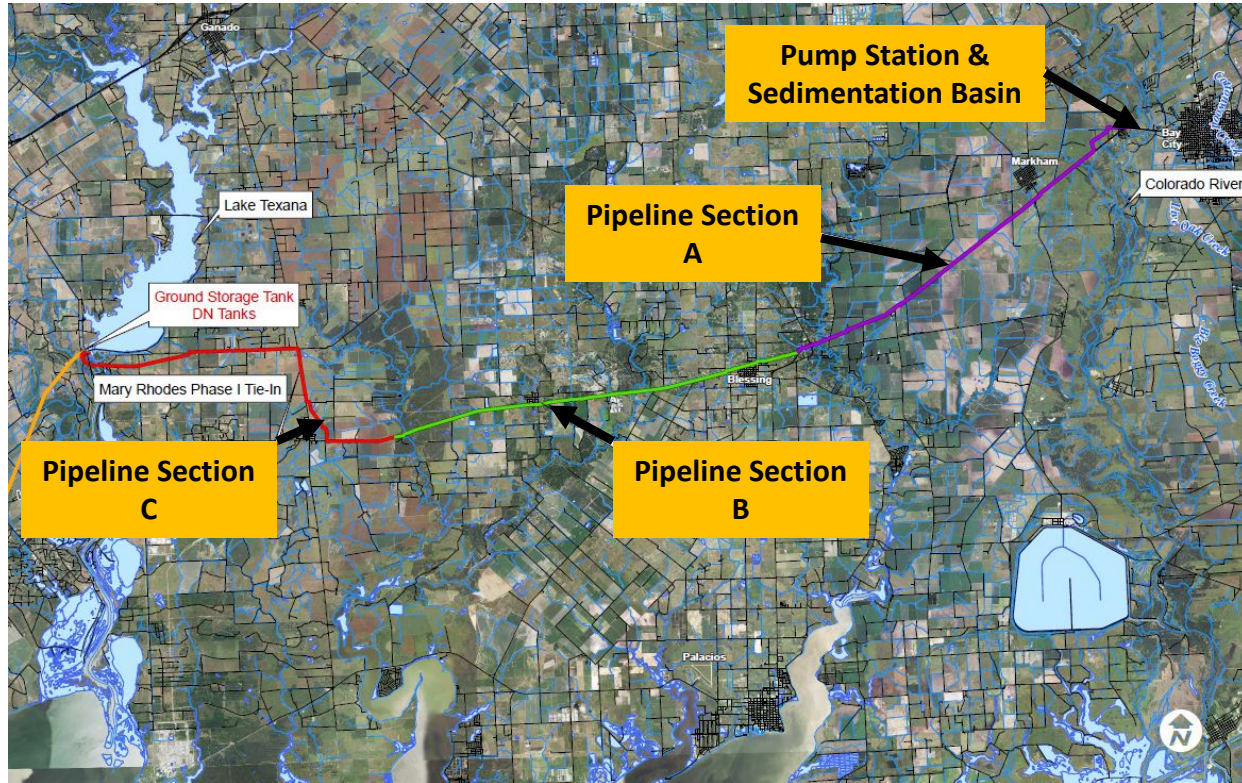
# Project Scope

---

- The Mary Rhodes Phase 2 extends Phase 1 from Lake Texana to the Colorado River
  - Phase 1 is a 102-mile 64” pipeline that connects Lake Texana to the Coastal Bend (completed in 1998)
  - Phase 2 consists of a 41-mile 54” pipeline with new River Pump Station, Sedimentation Basin, Booster Pump Station, 6MG ground storage tank and associated improvements to the existing West Delivery System Pump Station at Lake Texana
  - Phase 2 Project was developed in 4 parts (Construction Contracts):
    - 3 pipeline contracts; Sections A, B, and C
    - Pump Station and Sedimentation Basin
-



# Project Map





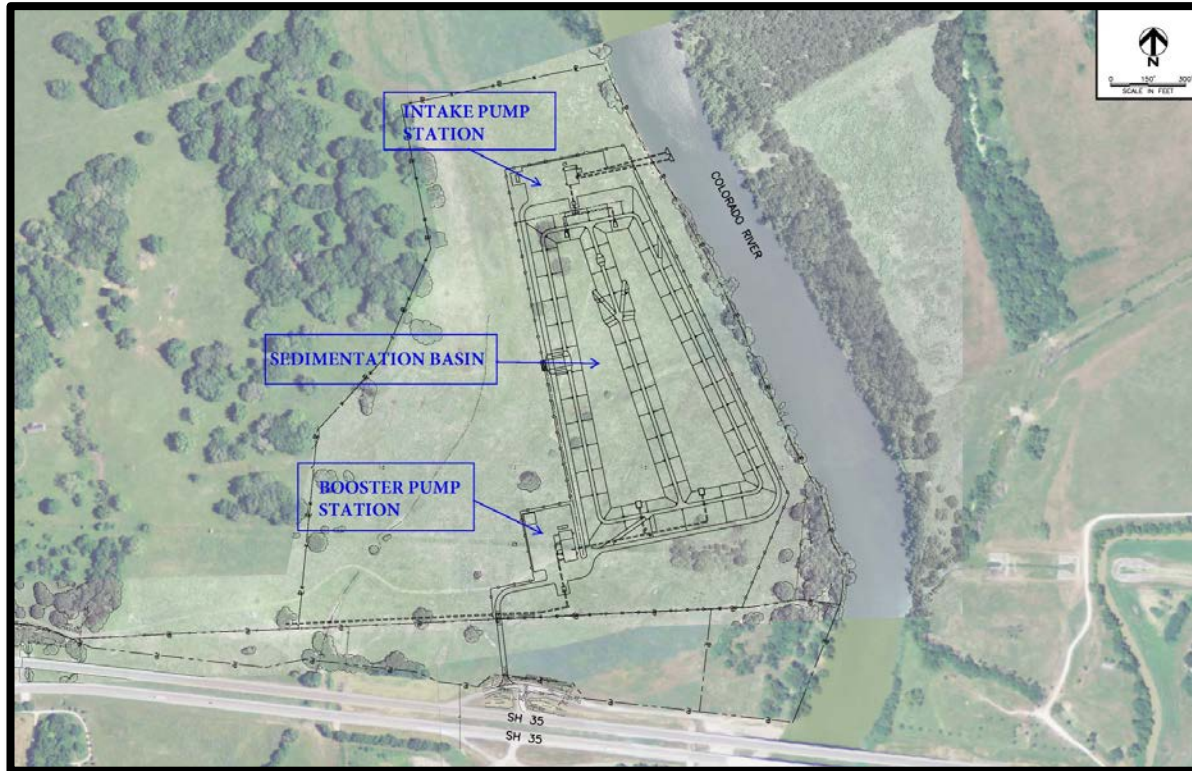
# Pipeline Contracts

- All 3 Sections Awarded to Garney Companies, Inc. for \$84 MIL
- Construction began April 2014 and is approximately 82%
  - Section A is approx. 58%
  - Section B is approx. 93%
  - Section C is approx. 96%
- Contract Substantial Completion April 2015
- Projected Substantial Completion April 2015
- ❖ Garney subcontracted Section A to Oscar Renda Contracting and Section B to SJ Louis Construction





# Pump Stations & Sedimentation Basin





# Pump Station & Sedimentation Basin

- Awarded to Oscar Renda Contracting for \$29 MIL
- Construction is approximately 30%
- Contract Substantial Completion June 2015
- Projected Substantial Completion September 2015





# Overall Schedule

- 27 rain days to date
- All Pipeline Sections on schedule for April 2015 substantial completion
- Pump Station 3 months behind schedule
- Contractor Recovery Actions
  - Increased Crews and Management
  - Increased work hours to 7 day work week with 12 hours days
  - Alternative (Manual) Pump Operations to Deliver Water in July
- City Actions
  - Reinforced Proactive & Prompt Responses
  - Delay Notifications
  - Potential Liquidated Damages (\$3,500/day)







# Program Budget

<b><u>FUND SOURCE:</u></b>	
Texas Water Development Board Loan.....	\$7,964,079
Water Revenue Bonds.....	\$4,462,897
Future Funding Required.....	\$148,521,027
<b>PROJECT TOTAL.....</b>	<b>\$160,948,003</b>
<b><u>FUNDS REQUIRED:</u></b>	
Construction for Pipeline Sections A, B, and C (Garney Companies, Inc.).....	\$84,121,405
Construction for Pump Stations/Sedimentation Basin (Oscar Renda Contracting).....	\$29,167,288
Construction Contingency (10%).....	\$11,328,869
Pump Station Pumps and Motors (Smith Pump Company, Inc.)(5% remaining cost).....	\$227,722
Engineer Design (Freese and Nichols, Inc.).....	\$11,335,503
Legal Services & Future Misc Project Costs (Bruce Hawn, Welder Leshin, LLP).....	\$10,812,500
AEP Transmission Line Relocation.....	\$1,500,000
Construction Management/Observation Services (Freese and Nichols, Inc.).....	\$3,965,785
Construction Observation Services (AGCM, Inc.).....	\$1,679,942
Reimbursements.....	\$5,814,433
<b>TOTAL.....</b>	<b>\$159,953,447</b>
<b>PROJECT BUDGET BALANCE.....</b>	<b>\$994,556</b>



# Construction Change Orders

---

## **Pipeline Sections A, B and C - \$610K**

- Matagorda County Road Crossing Bores (\$450,000)
  - 6 bores required for County road crossings
- Unanticipated grade and utility adjustments

## **Pump Stations and Sedimentation Basin - \$100K**

- Additional fencing required property settlement
- Additional overhead power feed
- Increased concrete slab size for VFD

**Total Change Orders to Date = \$710K (<1% of total contract value)**

---



Questions?