



Zoning Case #0415-03 Related Investors, Ltd.

From: “RS-6” Single-Family 6 District and the “FR” Farm Rural
District

To: “CG-2” General Commercial District

Planning Commission
Presentation
April 8, 2015

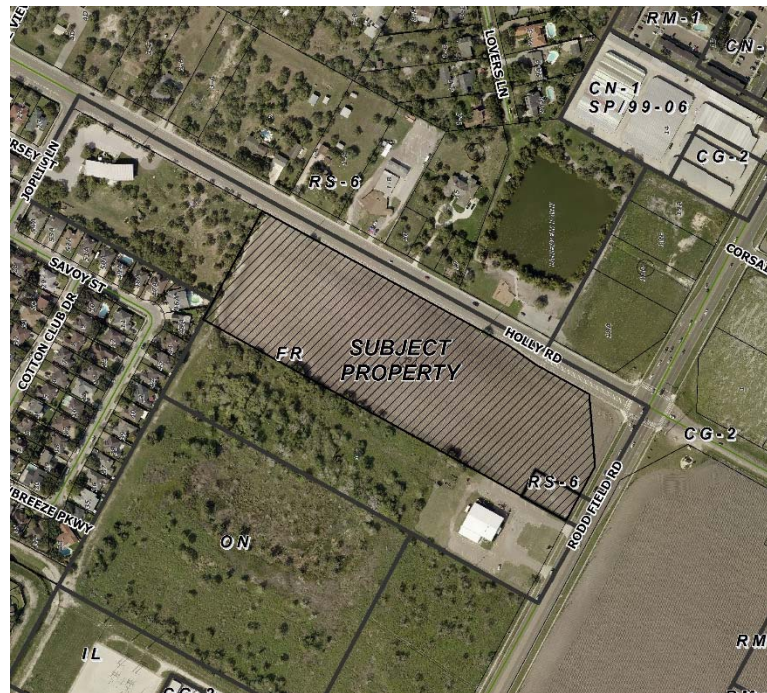


Aerial Overview



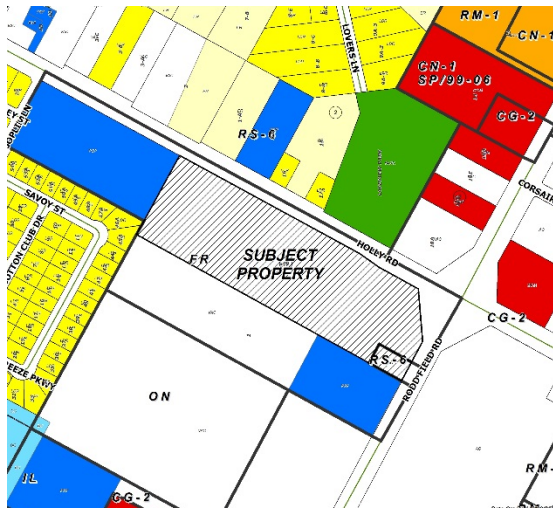


Aerial

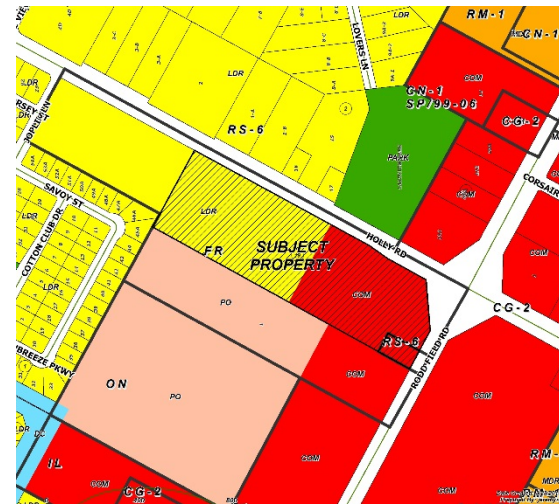




Existing Land Use

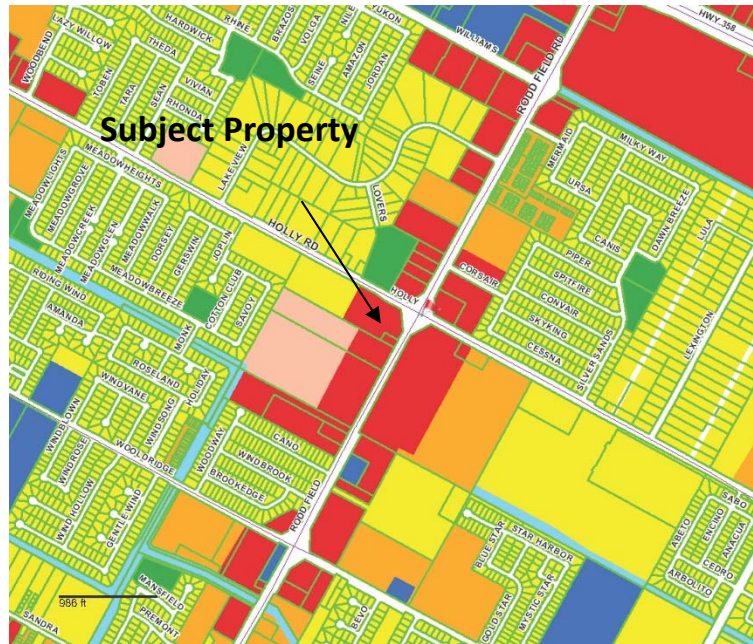


Future Land Use



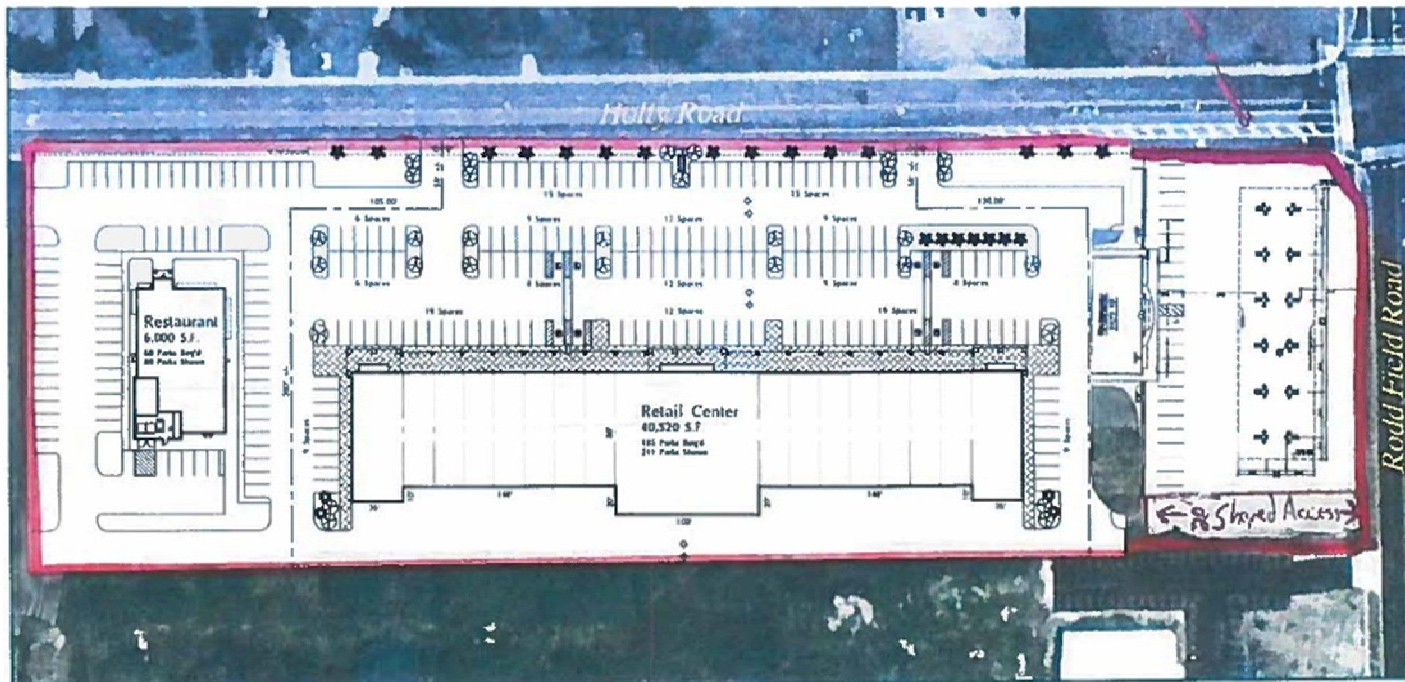


Future Land Use Map





Design Concept





Pictures

Facing Southwest Across Holly Road





Pictures

Facing South Across Holly Road





Pictures

Facing Southeast Across Holly Road





Pictures

Westbound on Holly Road





Pictures

East on Holly Road Toward Rodd Field Road





Pictures

West on Holly Road Toward Rodd Field Road





Public Notification

17 Notices mailed inside 200' buffer
5 Notices mailed outside 200' buffer

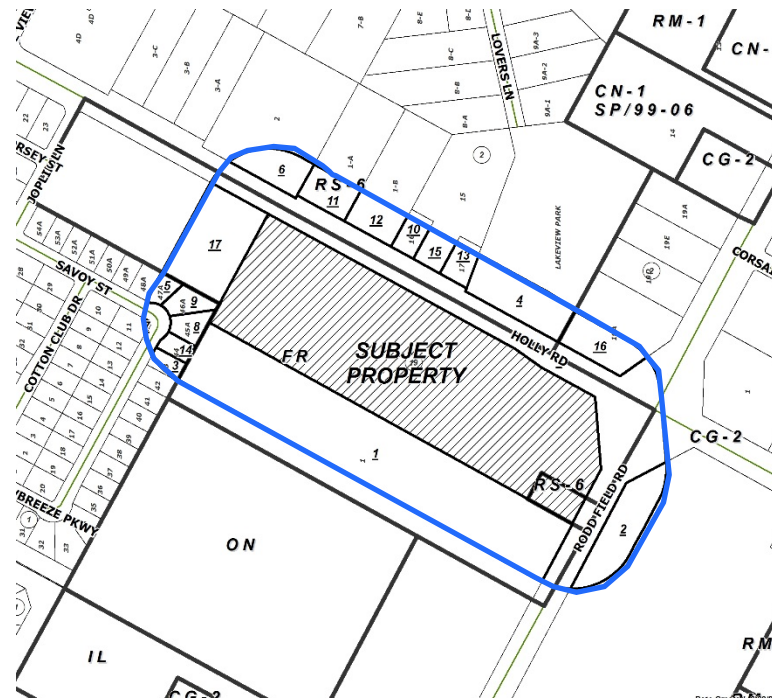
Notification Area



Opposed: 0



In Favor: 0





Staff Recommendation

Approval of the “CG-2” General Commercial District