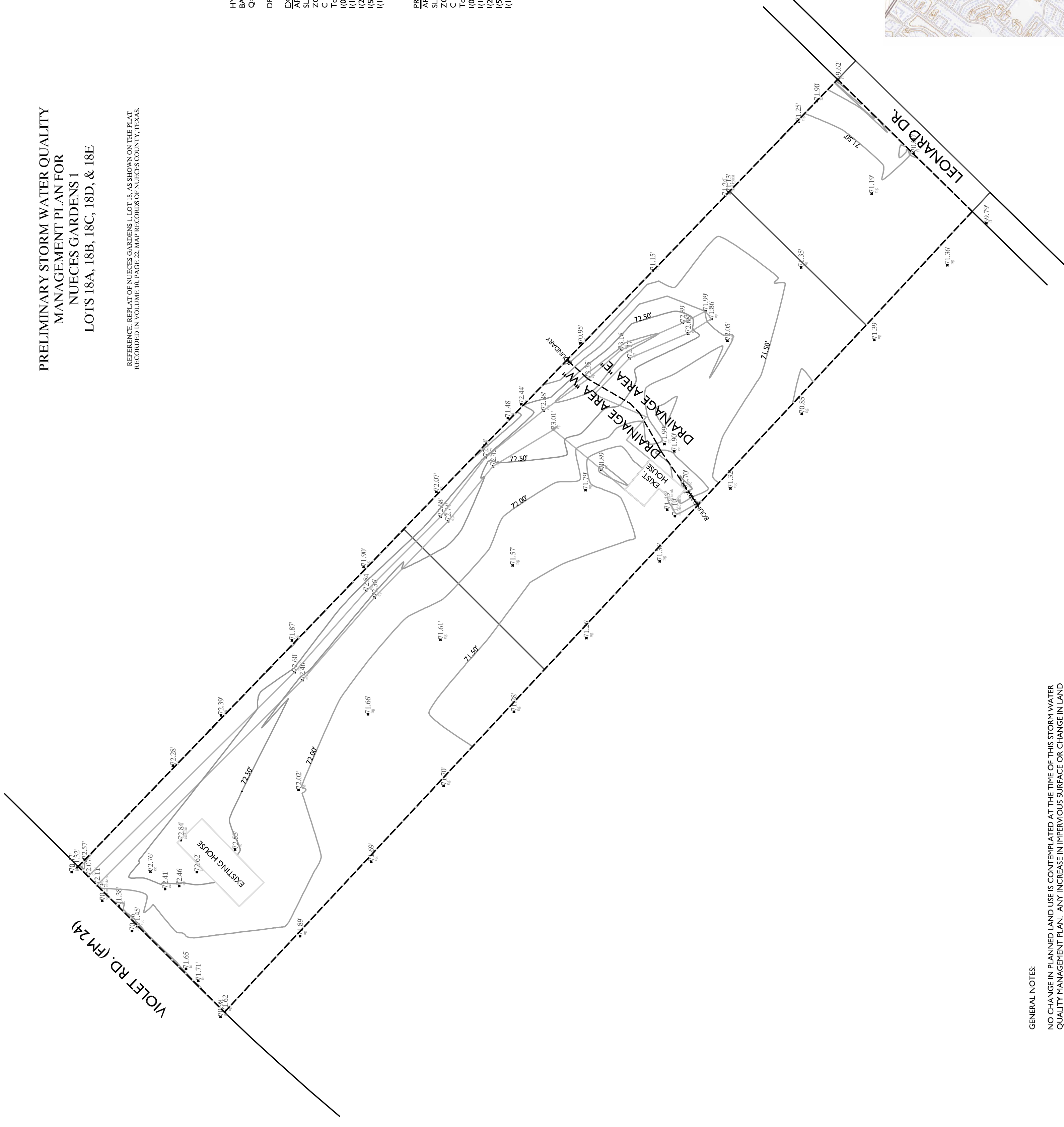
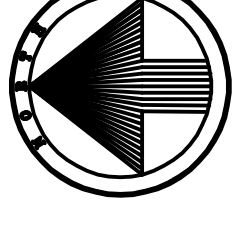
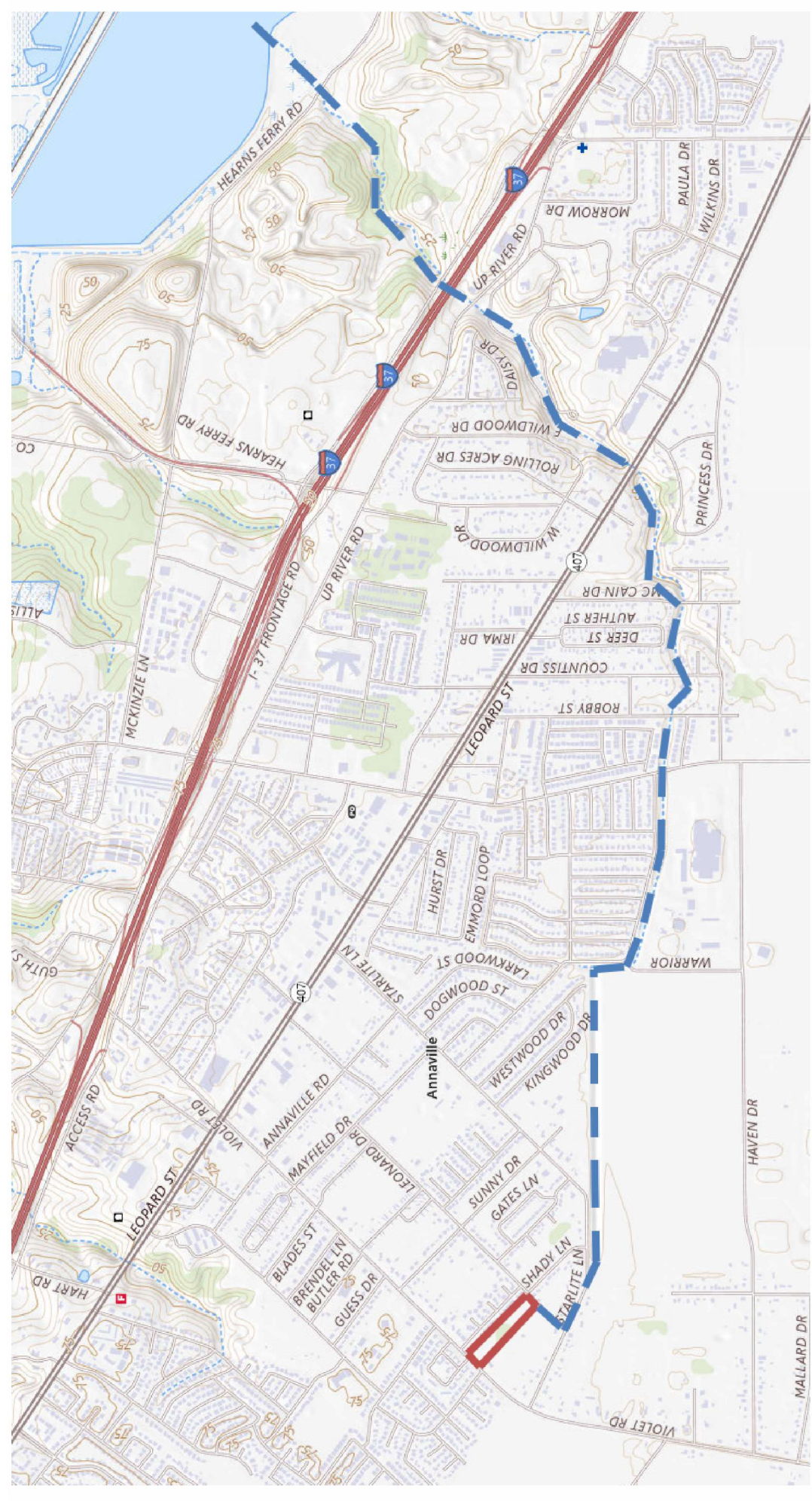


PRELIMINARY STORM WATER QUALITY
MANAGEMENT PLAN FOR
NUJECES GARDENS 1
LOTS 18A, 18B, 18C, 18D, & 18E

REFERENCE: REPEAT OF NUJECES GARDENS 1 LOT 18, AS SHOWN ON THE PLAT
RECORDED IN VOLUME 10, PAGE 22, MAP RECORDS OF NUJECES COUNTY, TEXAS.



MAP TO ULTIMATE OUTFALL - INNER HARBOR BASIN



GENERAL NOTES:
NO CHANGE IN PLANNED LAND USE IS CONTEMPLATED AT THE TIME OF THIS STORM WATER QUALITY MANAGEMENT PLAN. ANY INCREASE IN IMPERVIOUS SURFACE OR CHANGE IN LAND CONDITION MAKEUP AT SITE DEVELOPMENT WILL REQUIRE FURTHER DRAINAGE REVIEW AND MITIGATION MAY AFFECT BUILDABLE AREA IN SITE DEVELOPMENT
CONSTRUCTION PLANS HAVE NOT BEEN SUBMITTED. THE SITE OPERATOR WILL BE RESPONSIBLE PREPARING A SITE SPECIFIC STORMWATER POLLUTION PREVENTION PLAN AND FOR OBTAINING AUTHORIZATION FOR STORMWATER DISCHARGE PERMIT FROM TCEQ.
THIS PLAN CONFORMS WITH CITY OF CORPUS CHRISTI ADOPTED CODES, ORDINANCES AND STORM WATER MASTER PLAN, WITH NO PROPOSED AMENDMENTS.

HYDRAULIC CALCULATIONS
BASED UPON RATIONAL METHOD
Q=CIA

DRAINAGE AREA: W

EXISTING
AREA = 2.97 ACRES
SLOPE: S<1%
ZONING: RS-6 SINGLE FAMILY 6 (RH-B)
C = 0.30
Tc = 30 min

Q(05) = 5.81 CFS
Q(10) = 6.74 CFS
Q(15) = 7.67 CFS
Q(20) = 8.60 CFS
Q(25) = 9.53 CFS
Q(30) = 10.46 CFS
Q(50) = 16.16 in/hr
Q(100) = 21.87 in/hr

HYDRAULIC CALCULATIONS
BASED UPON RATIONAL METHOD
Q=CIA

DRAINAGE AREA: E

EXISTING
AREA = 1.65 ACRES
SLOPE: S<1%
ZONING: RS-4 SINGLE FAMILY 6 (RH-B)
C = 0.30
Tc = 30 min

Q(05) = 3.23 CFS
Q(10) = 3.75 CFS
Q(15) = 4.27 CFS
Q(20) = 4.79 CFS
Q(25) = 5.31 CFS
Q(30) = 5.83 CFS
Q(50) = 8.60 in/hr
Q(100) = 11.37 in/hr

PROPOSED
AREA = 18 ACRES
SLOPE: S<1%
ZONING: RS-4 SINGLE FAMILY 6 (RH-B)
C = 0.50
Tc = 30 min

Q(05) = 5.81 CFS
Q(10) = 6.74 CFS
Q(15) = 7.67 CFS
Q(20) = 8.60 CFS
Q(25) = 9.53 CFS
Q(30) = 10.46 CFS
Q(50) = 16.16 in/hr
Q(100) = 21.87 in/hr

PROPOSED
AREA = 18 ACRES
SLOPE: S<1%
ZONING: RS-4 SINGLE FAMILY 6 (RH-B)
C = 0.50
Tc = 30 min

Q(05) = 3.23 CFS
Q(10) = 3.75 CFS
Q(15) = 4.27 CFS
Q(20) = 4.79 CFS
Q(25) = 5.31 CFS
Q(30) = 5.83 CFS
Q(50) = 8.60 in/hr
Q(100) = 11.37 in/hr



STX Engineering, PLLC
408 Claremore St
Corpus Christi, TX 78412
(361) 765-5046
TBPELS Firm # F-24046



PRELIM. STORM WATER Q.M.P.
LOTS 18A, 18B, 18C, 18D, &
18E
PREPARED FOR:
BRISTER SURVEYING, INC.

Sheet: 1 OF 1
N.T.S.