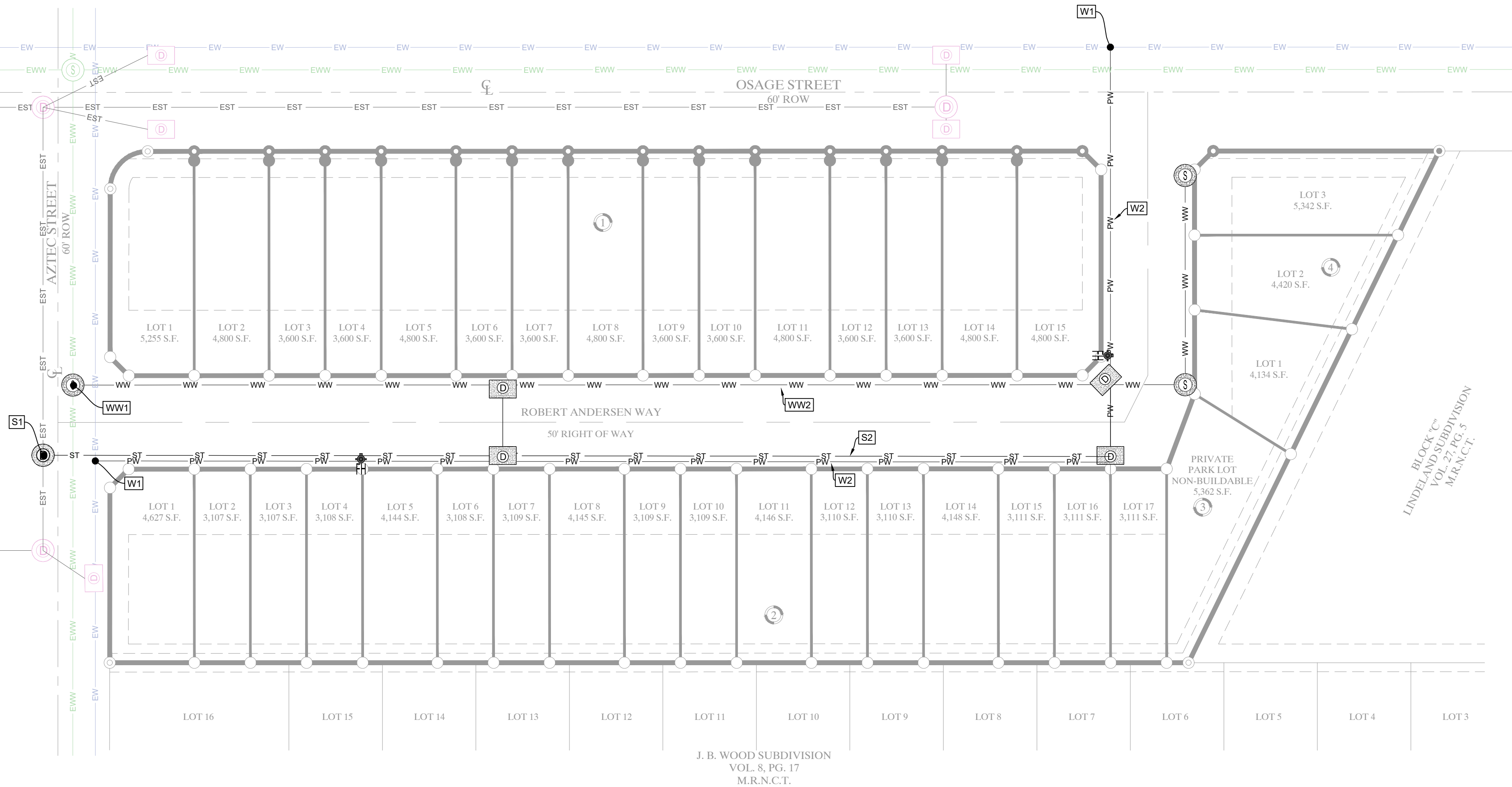


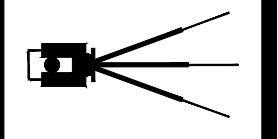
PLAT - FULL SIZE - 18 x 24
 MUNOZ ENGINEERING, LLC © 2023 (M:\Projects\Briar Surveying\230000 - OSAGE EST\TES\230510_TGH TWO Osage Estates - SWOMP - UTIL.dwg)



CALL OUT LEGEND	
W1	= WATER TIE-POINT
W2	= PROPOSED WATER UTILITY
FH	= PROPOSED FIRE HYDRANT
WW1	= WASTEWATER TIE-POINT
WW2	= PROPOSED WASTEWATER UTILITY
S1	= STORMWATER TIE-POINT
S2	= PROPOSED STORMWATER UTILITY

ENGINEER	THOMAS TIFIN, PE
SURVEYOR	RONALD BRISTER, RPLS
OWNER	
ENGR PID	N/A
SURVEY PID	N/A
OWNER PID	N/A
DRWN BY	APPD BY
TH	AN
REV #	REV #
SURVEY DATE	DATE
	12/07/2023

Briester Surveying
 4455 South Padre Island Drive, Suite 51
 Corpus Christi, Texas 78411
 Office 361-850-1800
 Fax 361-850-1802
 briestersurveying@corpus.wcbc.com
 Firm Registration No. 10072800



MUNOZ ENGINEERING
 1808 S. BROWNLEE BOULEVARD
 CORPUS CHRISTI, TX 78404
 OFFICE: 361.946.4848
 TBPELS: FIRM F-12240



CIVIL | STRUCTURAL | MARINE | LAND DEVELOPMENT

PRELIMINARY UTILITY PLAN FOR THE PLAT OF
TGH TWO
 NUECES COUNTY, TEXAS