

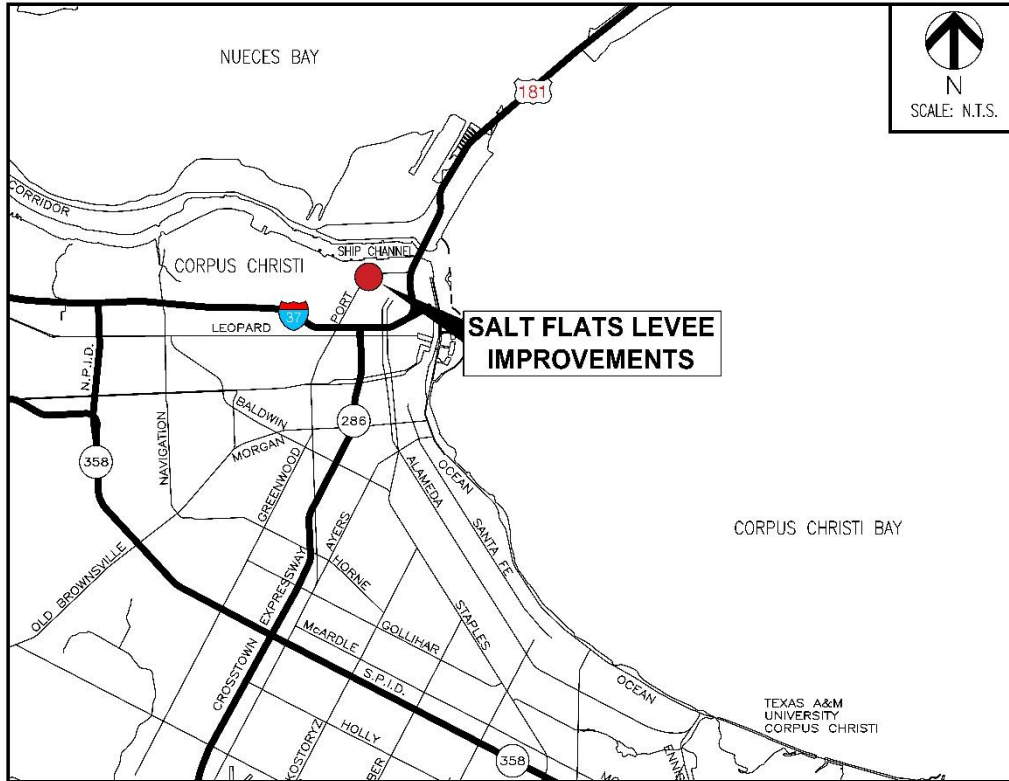
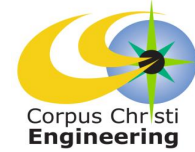
Salt Flats Levee Improvements



Council Presentation
October 15, 2019



Project Location





Downtown Flood Protection

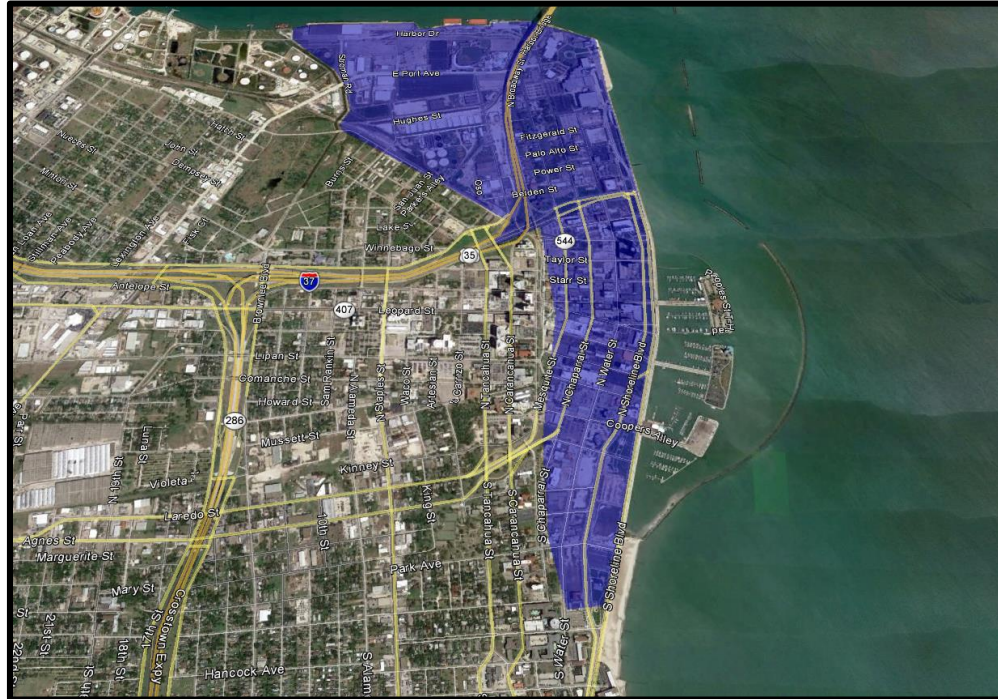
City of Corpus Christi's
Downtown Flood
Protection System
consists of:

- Salt Flats Levee
- Port Wharf
- Museum/USACE Flood Wall
- Seawall
- Breakwater
- Drainage Pumping Stations





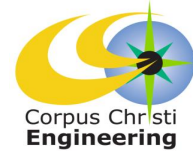
Downtown Flood Protection



Downtown Protected Area



Project Scope

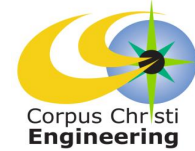


This project provides engineering and design address the greatest system vulnerabilities and to ensure a functional level of protection for the Salt Flats Levee. The scope is summarized below:

- Detailed analysis previous investigations and reports
- Detailed site investigations and recommendations to ensure the sustainability of the Levee
- Construction sequencing and temporary traffic control planning
- Prepare detailed construction documents
- Bid and Construction Phase technical support
- Public outreach
- Prepare and submit final As-Built drawings to the City



Project Schedule



2019			2020												2021					
O	N	D	J	F	M	A	M	J	J	A	S	O	N	D	J	F	M	A	M	J
Design									Bid			Construction								

Projected Schedule reflects City Council award in October 2019 with anticipated construction completion in June 2021.