

# **OUTSIDE CITY LIMITS WATER CONTRACT SERVICE AGREEMENT**

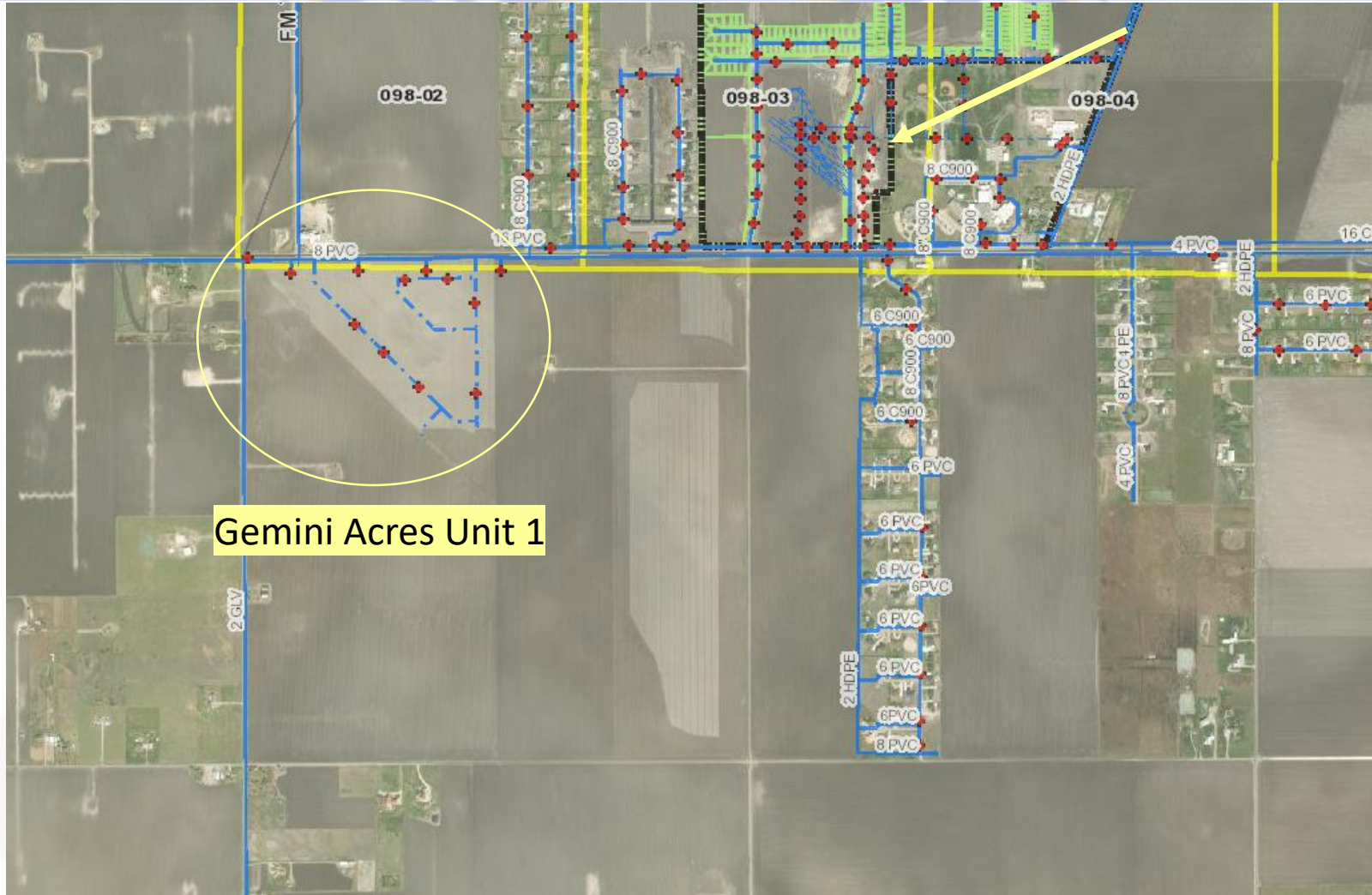
---

**Gemini Acres Unit 1 by MPM  
Development, LP**

City Council Presentation  
October 25, 2022

---

# VICINITY MAP

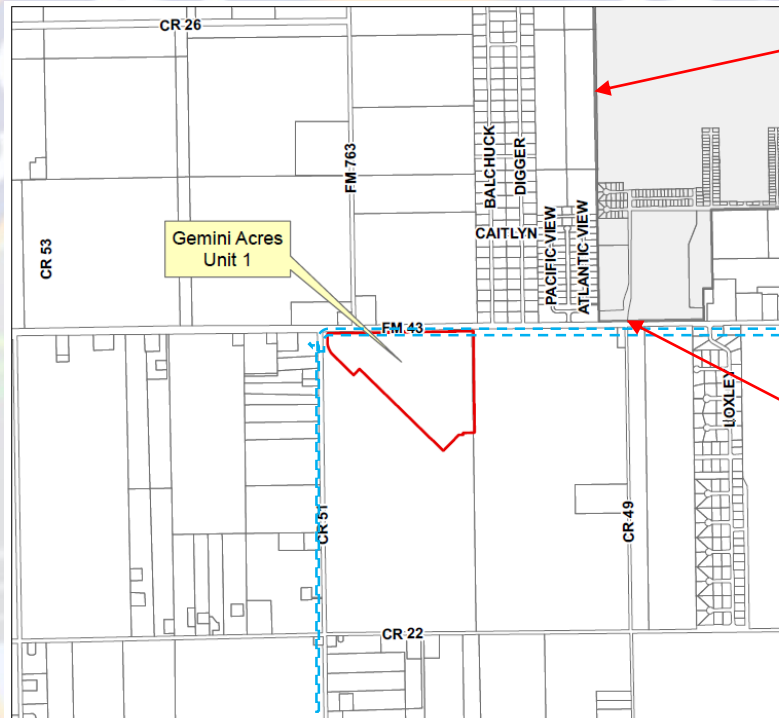


Gemini Acres Unit 1

Yellow Arrow indicates London School District on FM 43



# AERIAL MAP

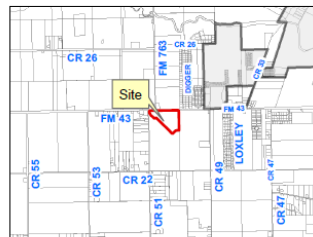


The grey boundary line indicates the City Limit boundary

Blue Dotted Line= existing 8" water line that runs to CR 51 the developer will tap into



0 500 1,000 2,000 Feet



## Exhibit "A"

### Water Contract Location Map

- City Limits
- Subject Property

Date Created: 6/27/2022  
Department of Development Services  
Projected Coordinate System: NAD\_1983\_StatePlane\_Texas\_South\_FIPS\_4205\_Feet  
Projection: Lambert\_Conformal\_Conic

# **STAFF RECOMMENDATION**

---

## **Approval**

**This request is in compliance with the City Code of Ordinances  
Sections 55-110**

