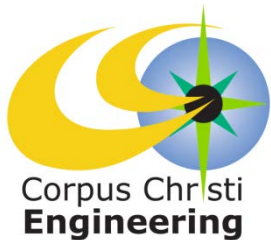


County Road 52 Extension CR 69 to FM 1880

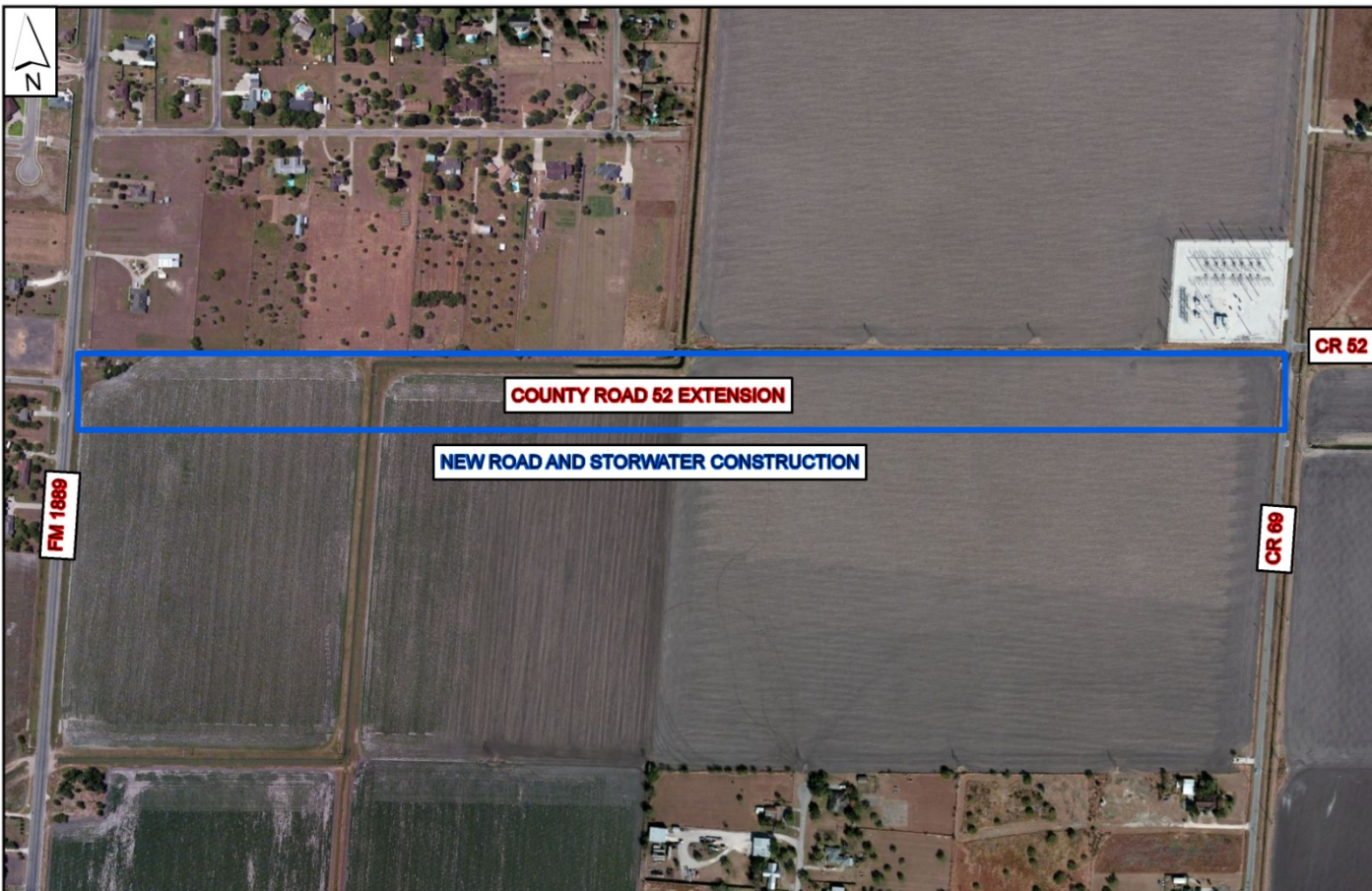
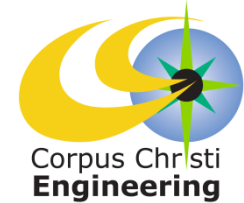
Bond Issue 2012
(Project No. E12136)



Council Presentation
March 19, 2013

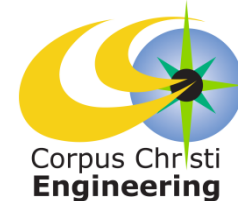


PROJECT SCOPE





PROJECT SCHEDULE



2013												2014												2015													
Mar	Apr	May	Jun	July	Aug	Sept	Oct	Nov	Dec	Jan	Feb	Mar	Apr	May	Jun	July	Aug	Sept	Oct	Nov	Dec	Jan	Feb	Mar	Apr	May	Jun	July	Aug	Sept	Oct	Nov	Dec				
Design												Bid & Award		Construction																							

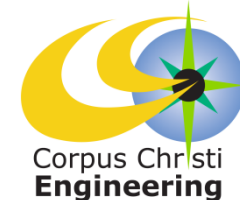
Project Estimate: 521 Calendar Days ≈ 17.4 Months

Projected Schedule reflects City Council award in June 2014 with anticipated construction completion in December 2015.





PROJECT COST



FUNDS AVAILABLE:	
Bond 2012 *	\$ 1,500,000.00
Storm Water	700,000.00
Nueces County **	2,200,000.00
TOTAL	\$4,400,000.00
FUNDS REQUIRED:	
Construction (estimate)	\$1,760,000.00
Contingencies (10%)	176,000.00
Land Acquisition (NEC and other parcels based on \$45,000/ac plus improvements)	1,105,000.00
Design Fees:	
Engineer (Naismith Engineering Inc.)	241,692.50
Construction Materials Testing (estimate)	88,000.00
Geotechnical Engineering Testing (Klienfelder)	35,000.00
Reimbursements:	506,000.00
TOTAL	\$3,911,692.50
BALANCE	\$488,307.50

*Bond 2012 voter approved amount = \$2,500,000 (based on an anticipated cost estimate). The current preliminary cost estimate is significantly lower than anticipated due to existing improvements but is subject to change during the design process as a result of investigation of existing conditions.

**Nueces County has passed a resolution for a contribution amount of \$1,250,000 toward this project. The City and County are currently negotiating an interlocal agreement for a 50/50% participating contribution of funding.

