



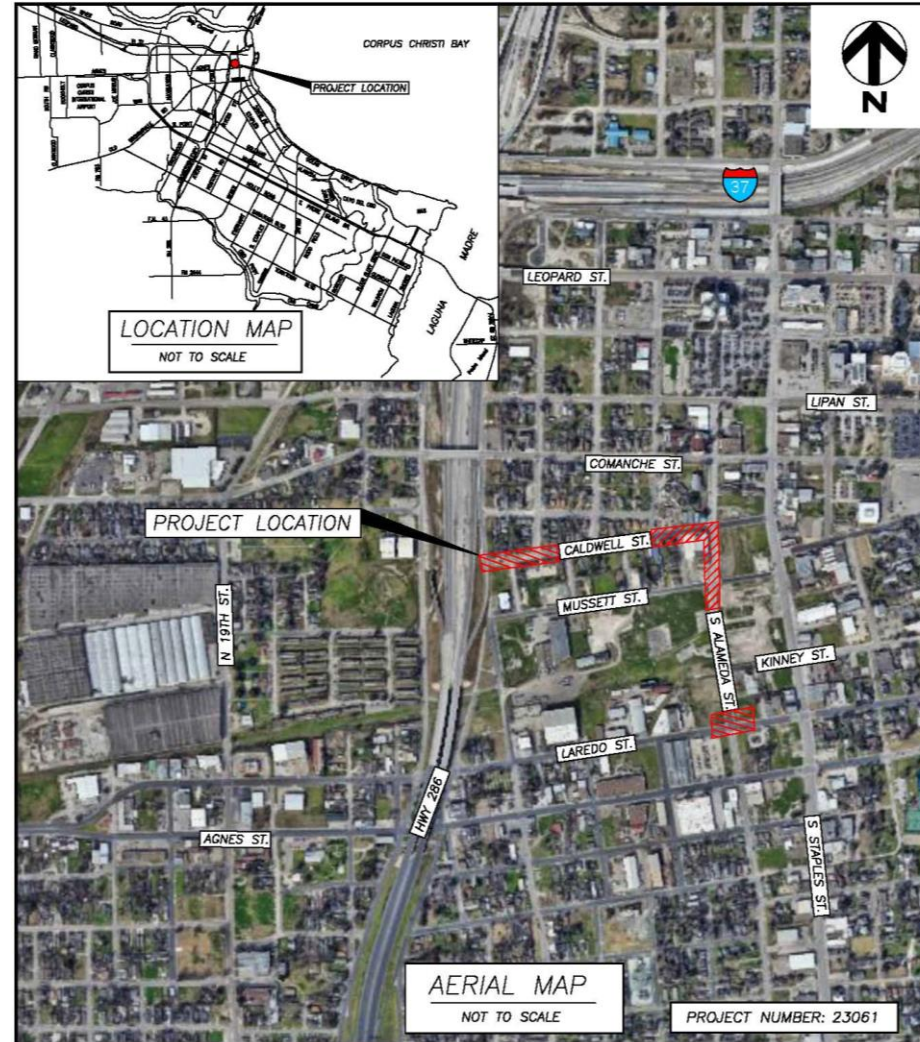
16-Inch Water Main Extension SH 286 to Alameda



Council Presentation
December 10, 2024



Project Location





Project Scope

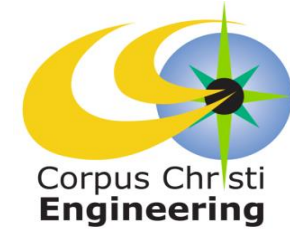


A brief summary of proposed improvements is as follows:

- Installation of approximately 3,000 linear feet of new 16-Inch PVC water main running along Caldwell Street and Alameda Street starting at intersection of SH 286 to Laredo Street.
- Additional water feed to the downtown area will improve reliability of service by improving supply and pressure.



Project Schedule



2024-2025	2026			2026-2027
December - December	J	F	M	April - April
Design	Bid/Award			Construction

Projected Schedule reflects City Council award in December 2024 with anticipated construction completion in April 2027.