



# Solid Waste Compost Facility



Council Presentation  
January 30, 2024



# Our Compost Facility Vision



The proposed Compost Facility is approximately 106 acres in size and will be located on the eastern portion of the Cefe Valenzuela landfill permit boundary, north of the future disposal Unit 2. The compost facility will include:

- Operation areas such as lined active composting area, screening, curing and final product area.
- Future bagging plant area, feedstock storage area, mixing/blending area, crushing pad.
- Roadway and parking for equipment, fueling station (diesel storage tank), lined stormwater retention pond and ditches.



# Our Compost Facility Vision



This facility will allow the City to evaluate, and if appropriate, begin the curbside collection of compostable materials.

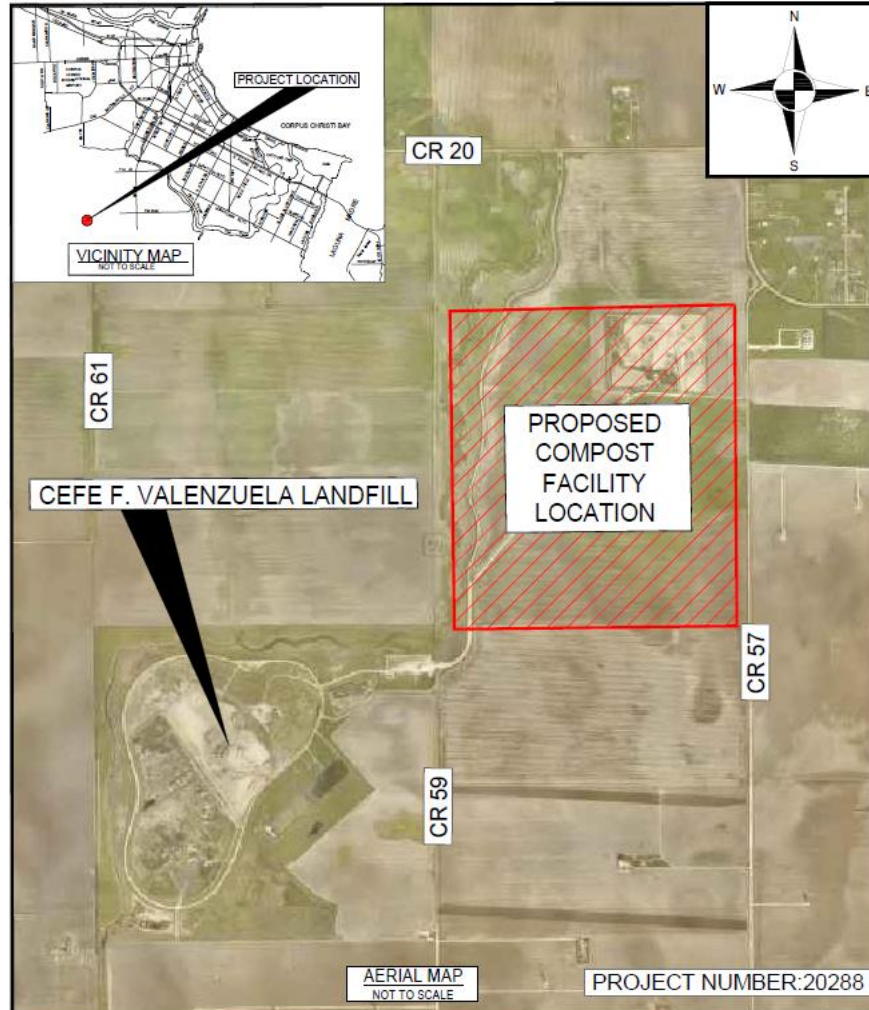
This curbside collection is a future option and must wait until the Compost facility is complete and operational.

The evaluation will include reviewing the cost and need for:

- Personnel
- Equipment
- Public education



# Cefe Landfill Location



- The Cefe Valenzuela Landfill has 2,268 permitted acres and a life expectancy of over 170 years.
- Roughly 475 acres of the current landfill that will not support waste disposal activities are available for the compost facility.
- There will be portions of the highlighted area that are not usable for the facility due to easements and buffer zones.



# Project Schedule



2024	2024	2024-2025
February – June	July – September	September – February
Design	Bid	Construction

The projected schedule reflects City Council award in February 2024, with design, bidding, and construction phase services anticipated completion by February 2025. Construction is anticipated to begin in September 2024. The project schedule is dependent on timely issuance of Notice to Proceed.