



# Drought Contingency Planning (DCP)

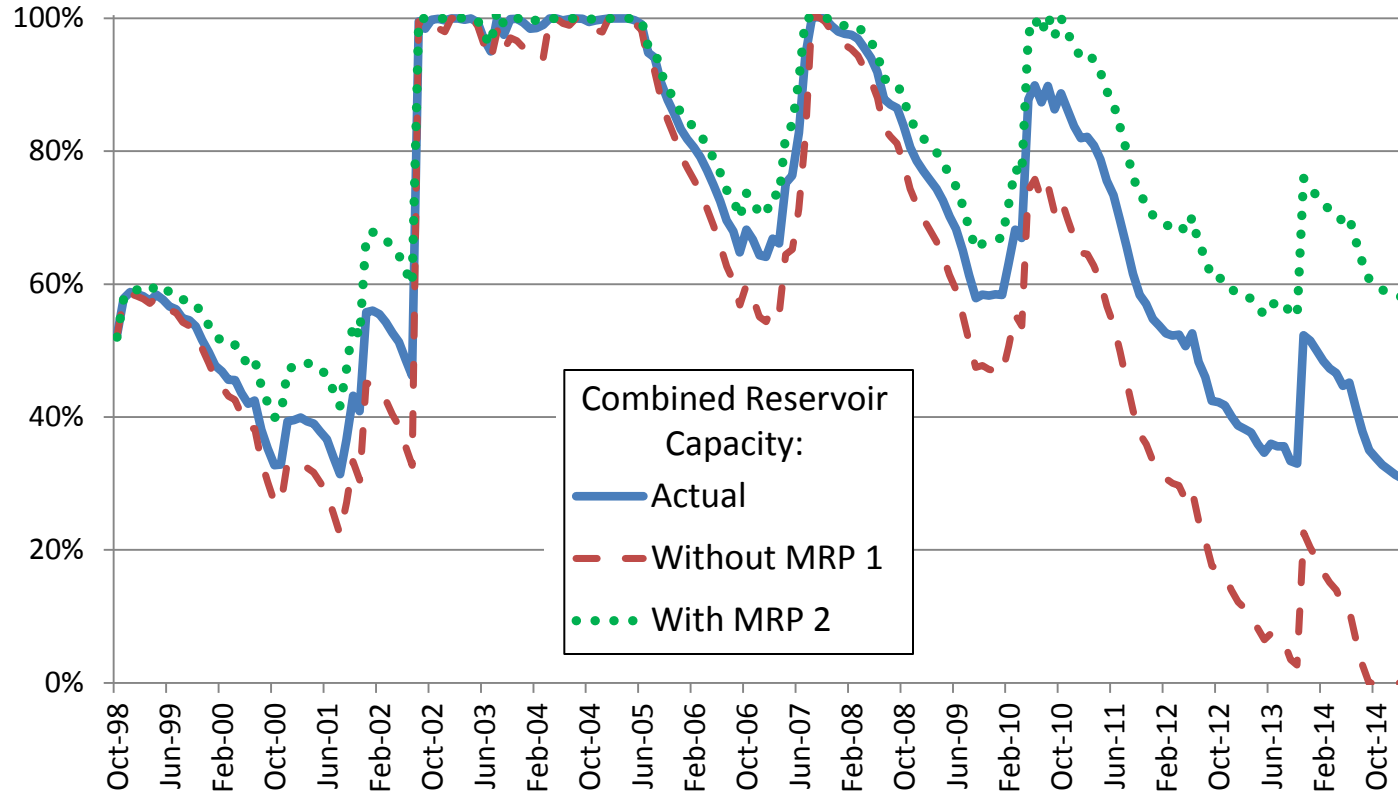


March 10, 2015



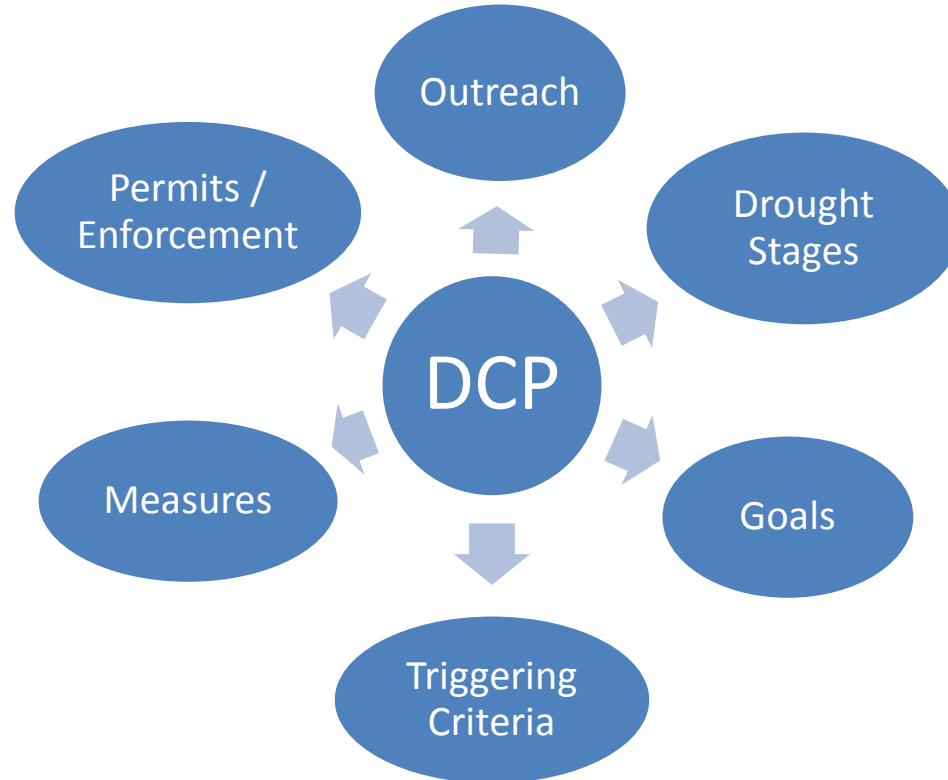
# Purpose of a DCP?

- Allow time for nature to work.



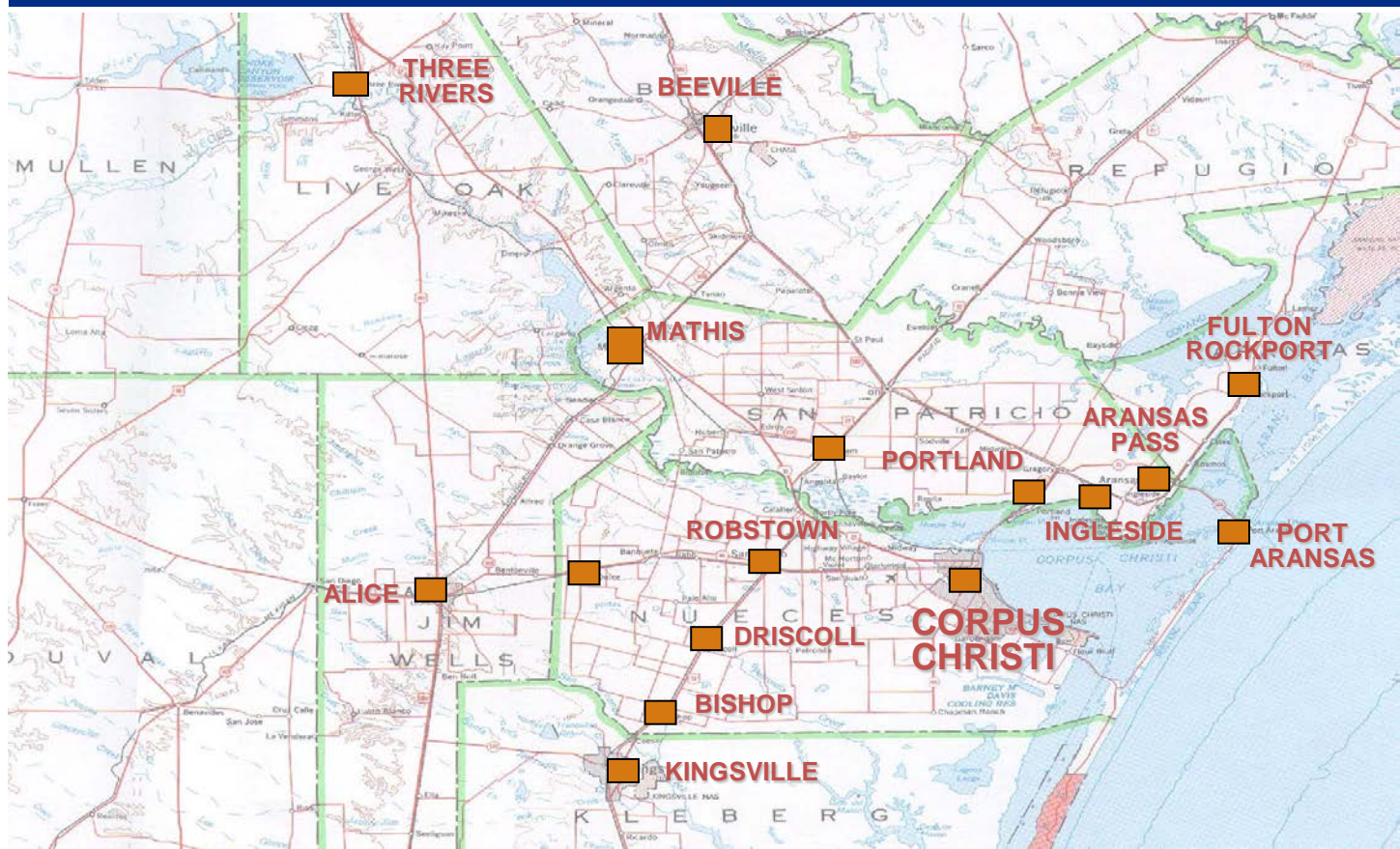


# Requirements of a DCP?





# Applicable Customers





# History and Agreed Order

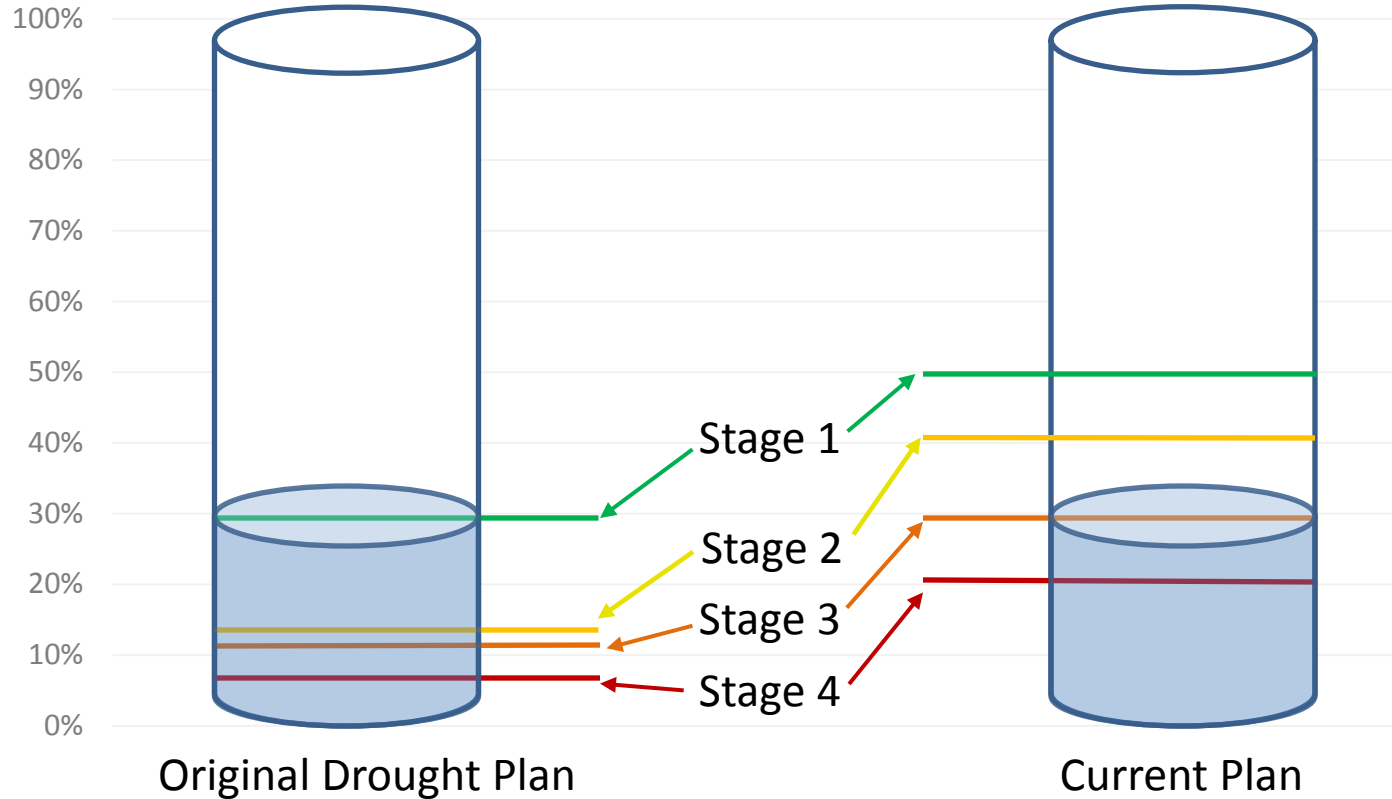


## Conservation Response

Lake Levels (Lake CC/Choke)	Agreed Order	Current DCP
<50 %	Voluntary time of day watering measure	Voluntary one-day-per-week watering
<40%	10:00 - 6:00 Outdoor Watering Restrictions	One-day-per-week watering restriction
<30%	Not more often than every 5 days watering	One-day-every-other-week watering restriction

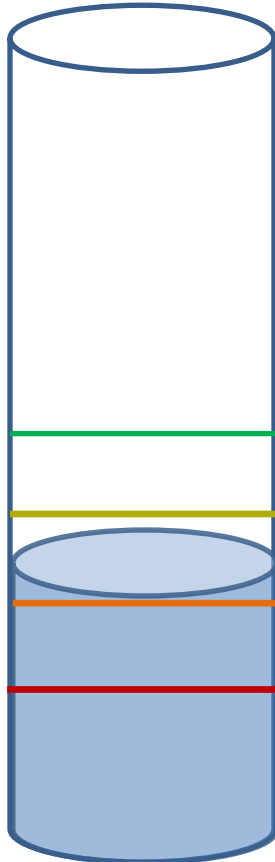


# Establishing Drought Triggers





# Drought Contingency Planning



Drought stages based on combined capacity percentage of Choke Canyon Reservoir and Lake Corpus Christi:

<50% = Stage 1 Mild

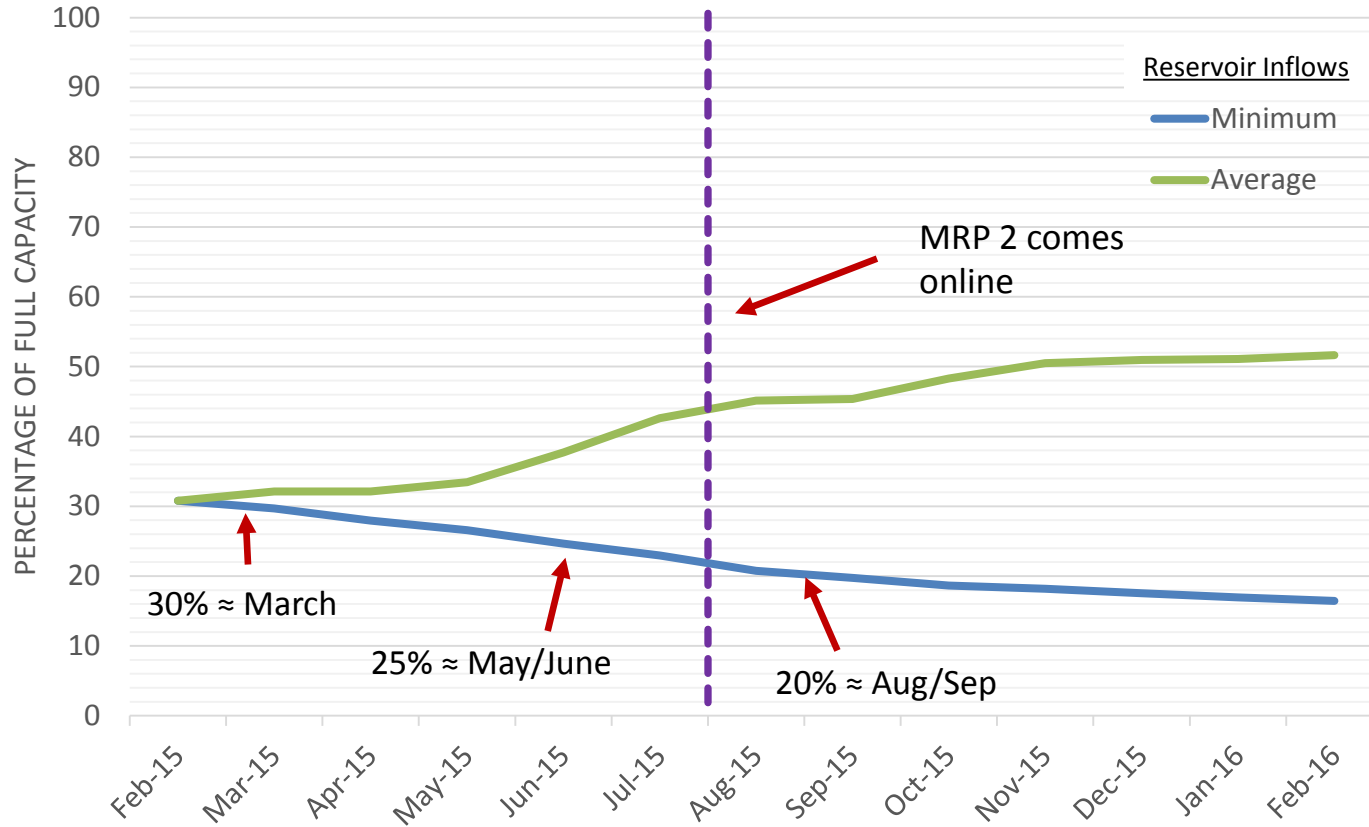
<40% = Stage 2 Moderate

<30% = Stage 3 Severe

<20% = Stage 4 Critical



# Short Term Reservoir Projection Model







## Stage 3 Severe Drought Response

---



- Date of initiation: Early March 2015
  - Restrictions:
    - Sprinkler irrigation and car washing limited to one day every other week: designated recycling day
      - Hand watering or drip irrigation permitted any time/any day
    - Washing down sidewalks, driveways, buildings, or other hard surfaces are prohibited except for public health and safety or with special permit
-

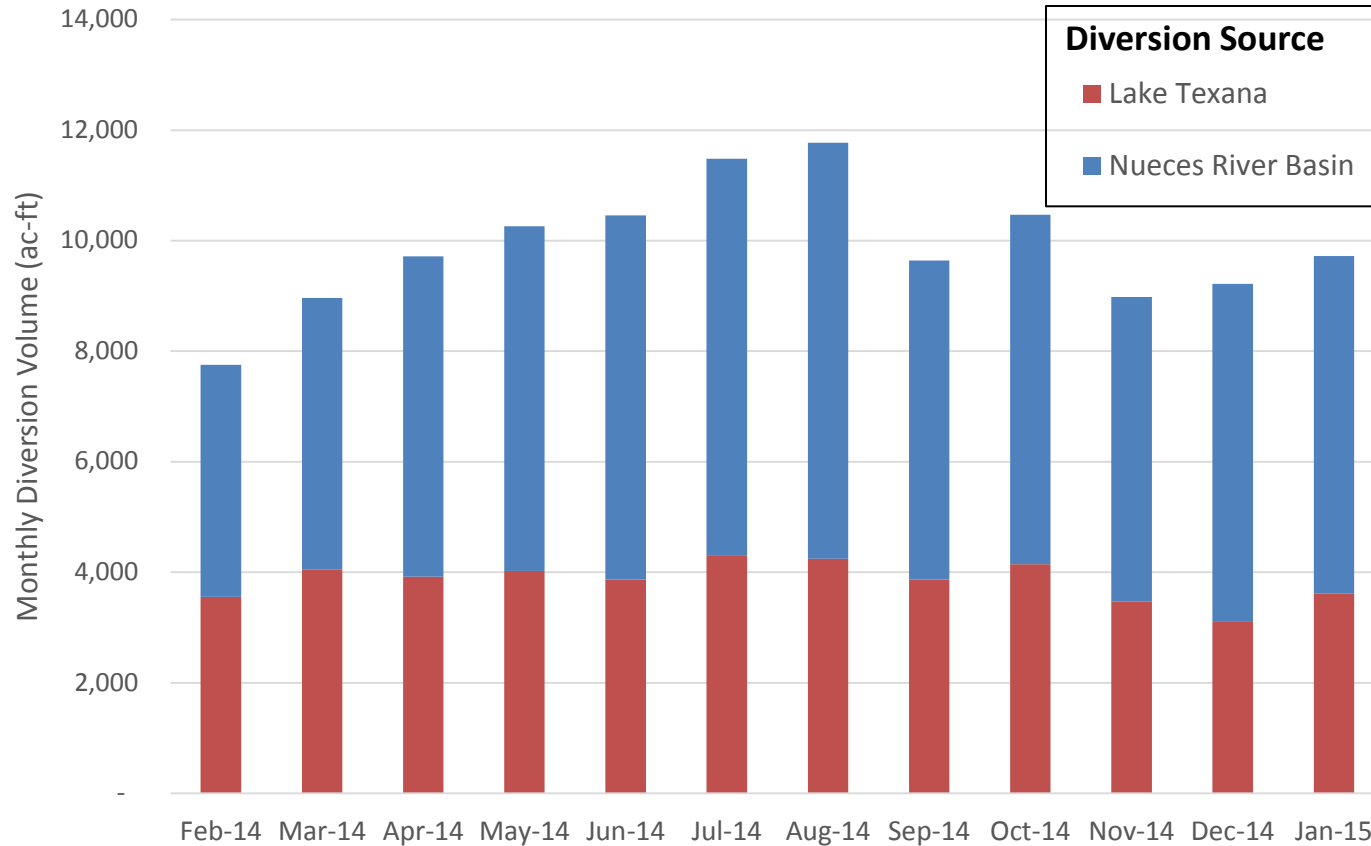


# Water Supply Index





# Water Use by Basin





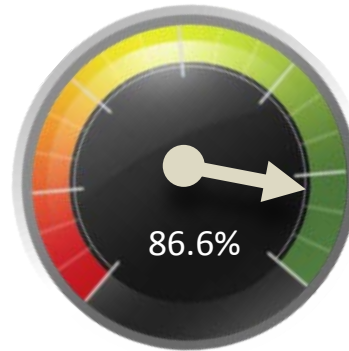
# Total Water Availability

Water Supply Index includes volumes from Lake Corpus Christi, Choke Canyon Reservoir, and Lake Texana



CCR System %  
Storage Capacity

+



Lake Texana %  
Storage Capacity

=



Combined Water Supply Index

\*Levels as of 2-18-15