

Padma Estates Annexation and Rezoning

Public Hearing and First Reading Ordinance



City Council Presentation
February 11, 2025



Location

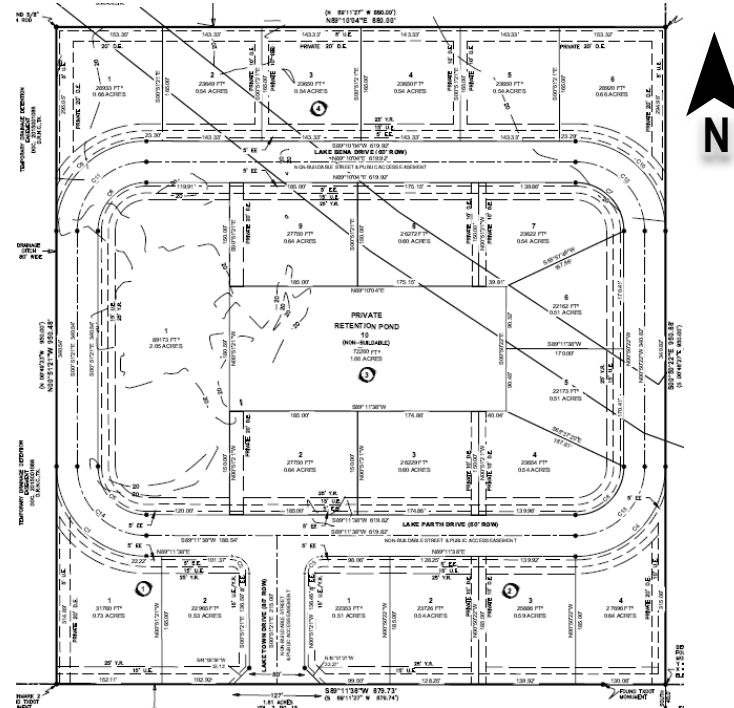




Padma Estates Master Plan

Padma Estates Subdivision:

- ❖ 19 acres
- ❖ Rezone to RS-22 Single-Family
- ❖ 21 dwellings units
- ❖ Mostly 1/2 acre lots
- ❖ One stormwater detention lot
- ❖ Unit Price Range: \$480k to \$650k



FM 2444 / S Staples St