

ALVEST EQUIPMENT SERVICES (USA), LLC



Corpus Christi
International Airport

AES Lease Agreement

Background: The 96-square-foot area in the West Breezeway is currently underutilized. Licensing this space for storage converts aeronautical terminal footprint into a revenue-generating asset.

Alvest Equipment Services is a reputable global provider with a proven track record in aviation support. Their presence on-site strengthens the airport's maintenance infrastructure.

The lease terms align with the airport's standard rate and fee structure for terminal storage space and comply with all local and FAA commercial leasing guidelines.

Summary: This item is an ordinance to approve a 12-month lease agreement with Alvest Equipment Services (USA), LLC for **96 square feet** of storage space in the West Breezeway of the terminal. The space will be used for the storage of Ground Support Equipment (GSE) repair tools and high-value assets. This agreement provides the tenant with necessary on-site proximity to support airport ground operations while generating rental revenue for the Airport Fund.

Recommendation: Staff recommends approval of the lease agreement. Providing AES with dedicated storage space supports the seamless maintenance of ground support equipment, enhances the efficiency of airfield operations, and ensures equipment and tools are secured in a controlled terminal environment.

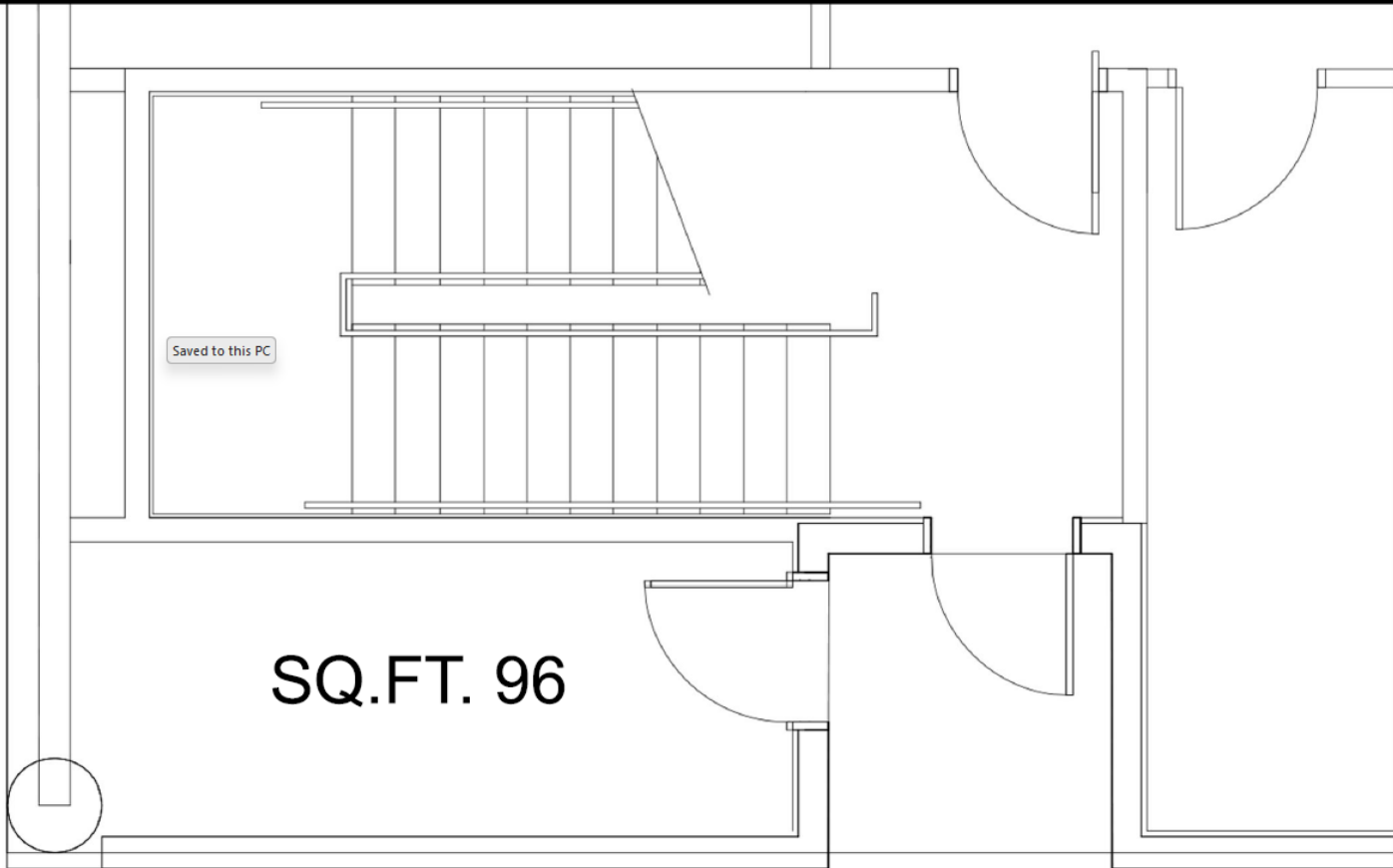


EXHIBIT B
WEST BREEZEWAY STORAGE AREA
1000 International Drive

Not to Scale

Sheet No. 2 of 2

Prepared by: Randy Schumann

Approved by: Victor Gonzalez

Date: 07/16/2025