

# Mary Rhodes Pipeline Phase I Pump System Improvements

**Nicholas Winkelmann, P.E.**

**Director Water Systems and Support Services**

**March 25, 2025**

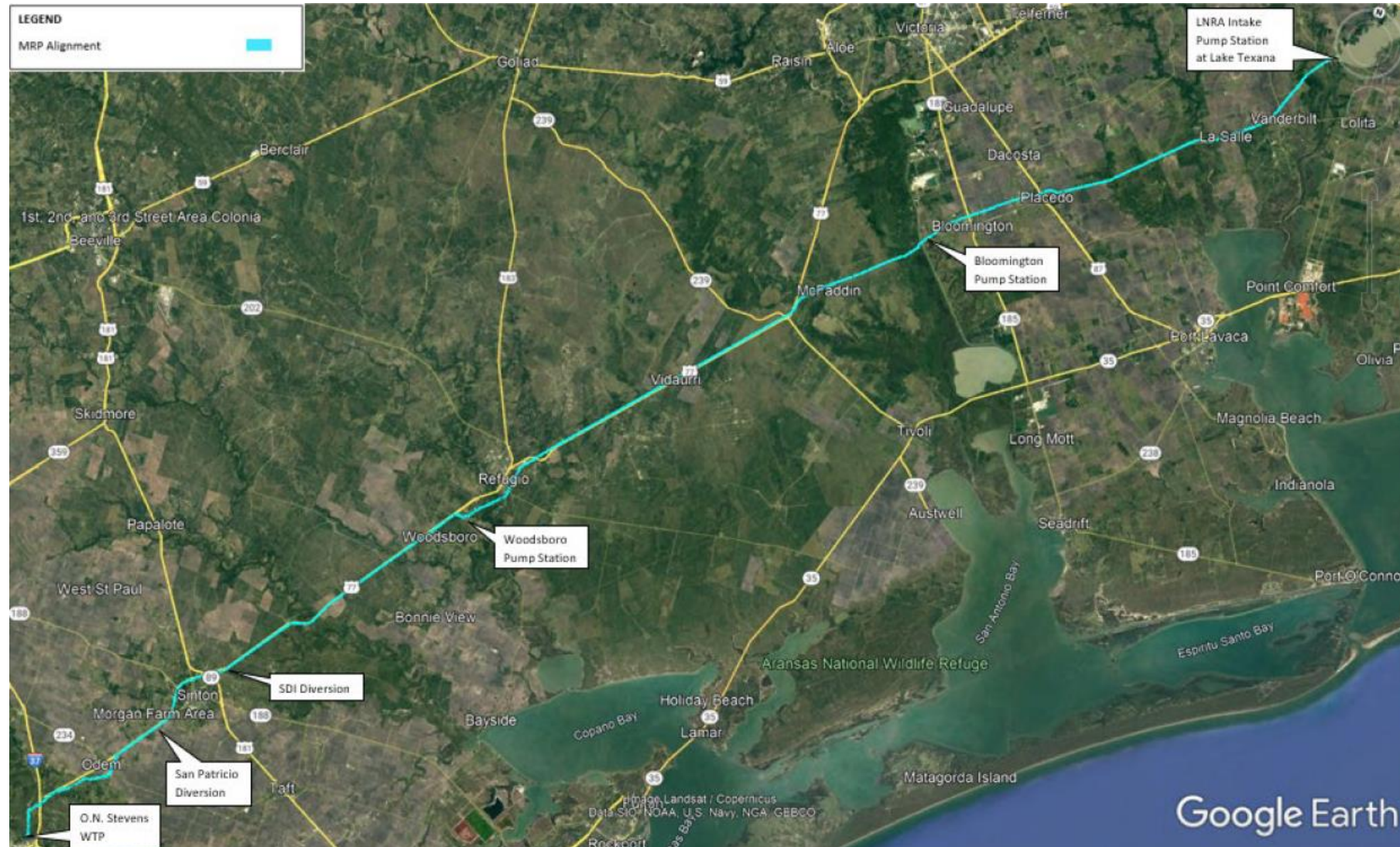
# Background

- In October 2024, City Council awarded a construction contract to H&S Constructors, Inc., of Corpus Christi, TX, for the Mary Rhodes Pipeline Phase I Pump System Improvements Project
- The purpose of the project is to upgrade the Bloomington and Woodsboro Pump Stations of Mary Rhodes Pipeline Phase
- The primary project scope includes adding one booster pump and two variable frequency drives (VFDs) at the Bloomington Pump Station, one VFD at the Woodsboro Pump Station, and upgrades to associated electrical, mechanical and instrumentation components
- With increasingly severe drought conditions, the operation of Mary Rhodes Pipeline with reliable redundancy is critical to the City's water supply
- For this reason, City staff requests contractor add one additional redundancy booster pump, VFD, and electrical and mechanical improvements to the Woodsboro Pump Station through a construction change order



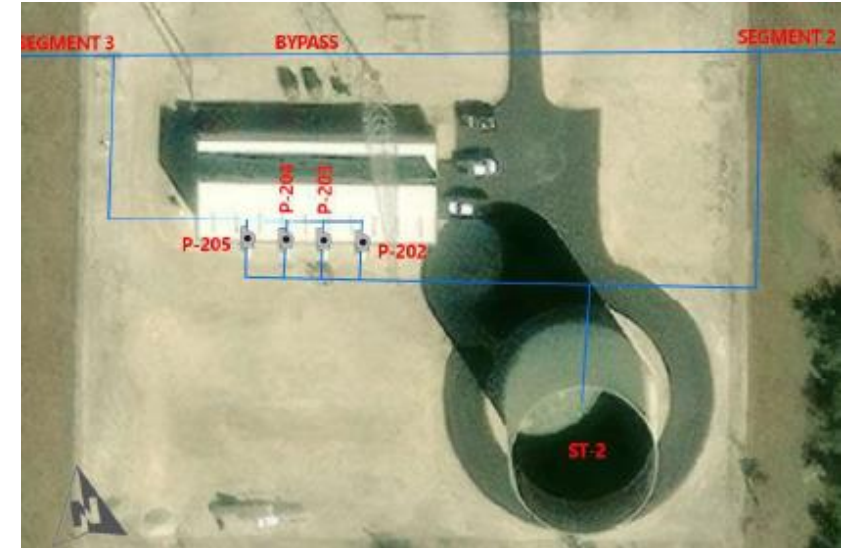
Woodsboro Pump Station

# Project Location





# Change Order



- The contractor, H&S Constructors, Inc., is completing planned pump station improvements on the Mary Rhodes Pipeline
- The contractor is performing well and is currently on schedule
- The implementation of this change order provides necessary operational redundancy for the Woodsboro Pump Station while the City brings in 75 MGD water from Lake Texana to the City under the Operational Schedule 4 of Mary Rhodes Pipeline

# Project Timeline

**Change Order No. 1 doesn't add any additional calendar days to the construction contract. The anticipated substantial completion date of the entire project is May 2026. The new materials are estimated to be installed in fall 2025. Schedule 4 pumping (75 MGD) is anticipated to begin on March 24, 2025.**

## Staff Recommendation

**Staff recommends approval of this Change Order No. 1 in an amount up to \$1,854,197.00 for the Mary Rhodes Pipeline Phase I Pump System Improvements Project with H&S Constructors, Inc. with funding available from the Raw Water Capital Fund and specifically from project 23027.**

***This change order provides additional equipment redundancy to increase the reliability of the system providing constant water supply through the Mary Rhodes Pipeline at Schedule 4 pumping operation.***

Four horizontal, wavy bands of blue and cyan colors that span the width of the slide, creating a decorative header effect.

**Thank you!**