



Zoning Case #0714-05 Gabriele Stauder-Hilpold

From: "RM-AT" Multifamily AT District
To: "CR-2/IO" Resort Commercial District with an Island
Overlay District



Planning Commission
Presentation
July 16, 2014

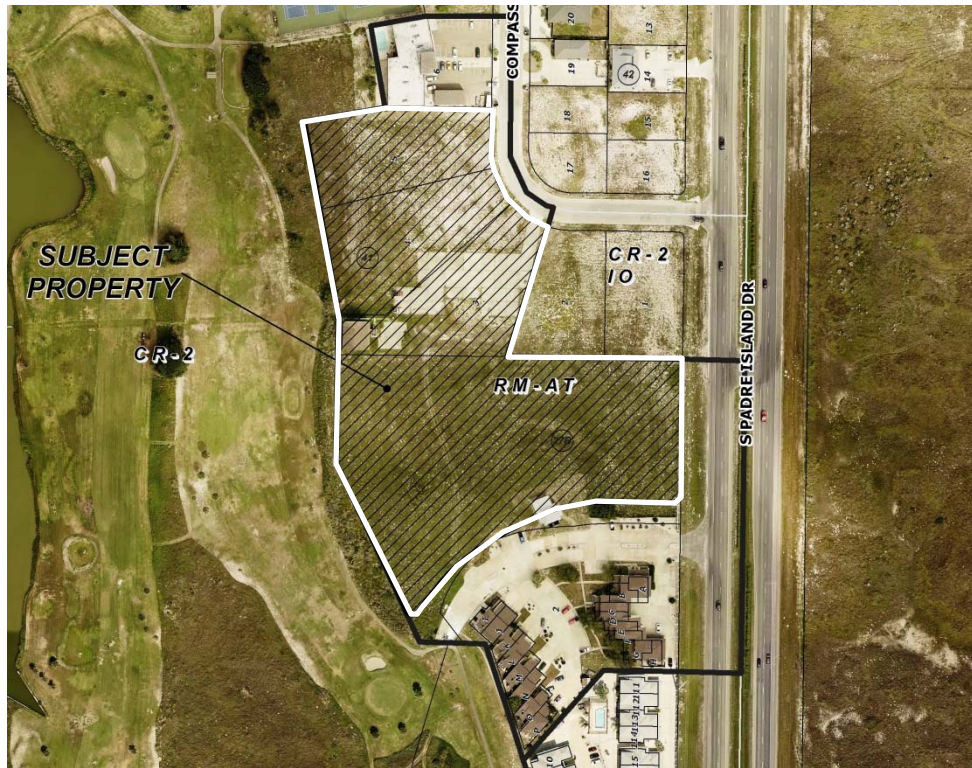


Aerial Overview



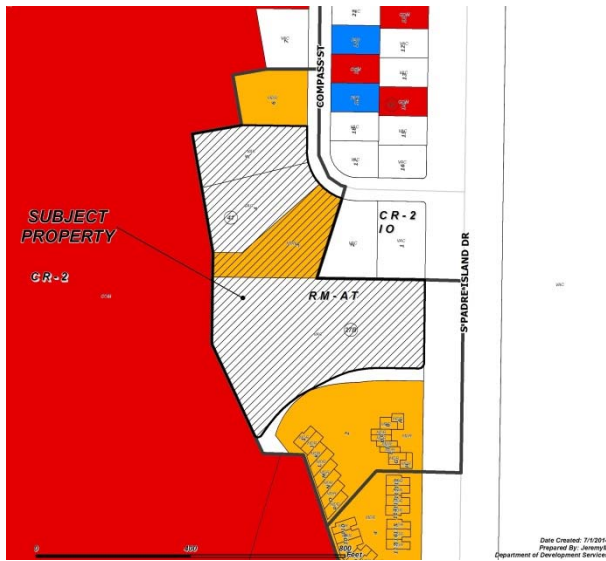


Aerial

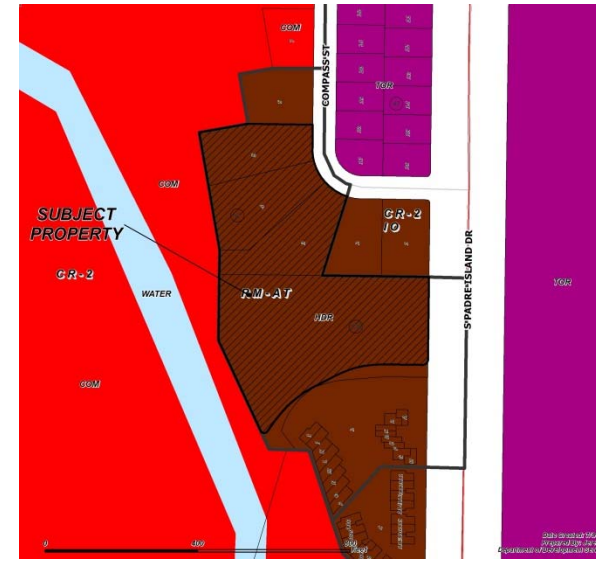





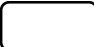




Existing Land Use



Future Land Use



- | | | | | | |
|---|------------|---|-------------------------|---|--------------------------|
|  | Commercial |  | Public/Semi-Public |  | High Density Residential |
|  | Vacant |  | Med Density Residential |  | Tourist |



Future Land Use Map





Pictures



South along Park Road 22

Townhomes



West along Compass Street

Apartments





Pictures



Commercial and public uses,
North across Compass Street



Townhomes south of Subject
Property





Pictures



Subject Property looking West



South at Park Road 22 and
Compass Street





Public Notification



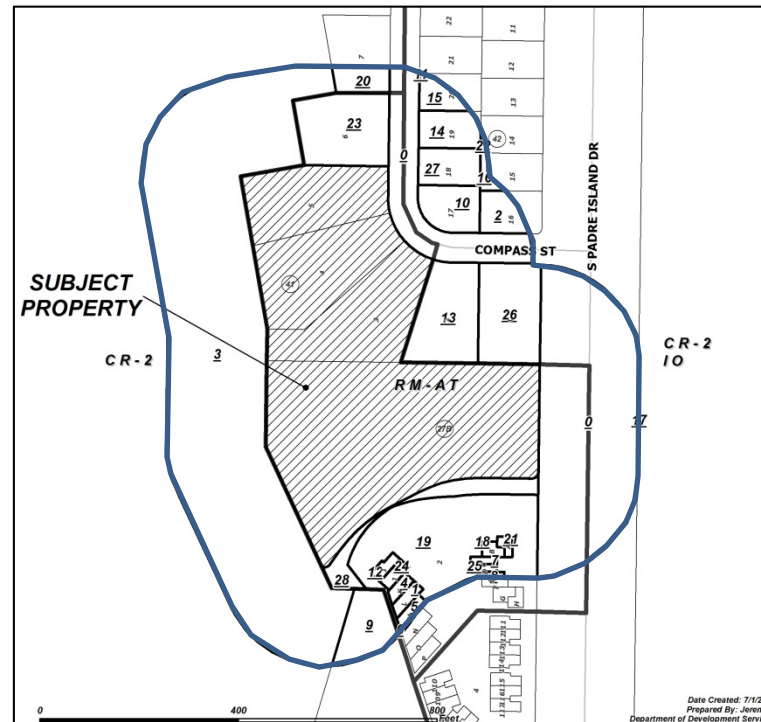
45 Notices mailed inside 200' buffer
2 Notice mailed outside 200' buffer

Notification Area

Opposed:



In Favor:





Staff Recommendation



Approval of the “CR-2/IO” Resort Commercial District with An Island Overlay District