

EXHIBIT A

Metes & Bounds Description for County Road (CR) 22 from CR 51 to CR 43

An approximately 19.41-acre tract of land, more or less, out of Laureles Farm Tracts, recorded in Volume 3 Page 15 of the Map Records, Nueces County, Texas, as depicted in the accompanying map and more particularly described as follows:

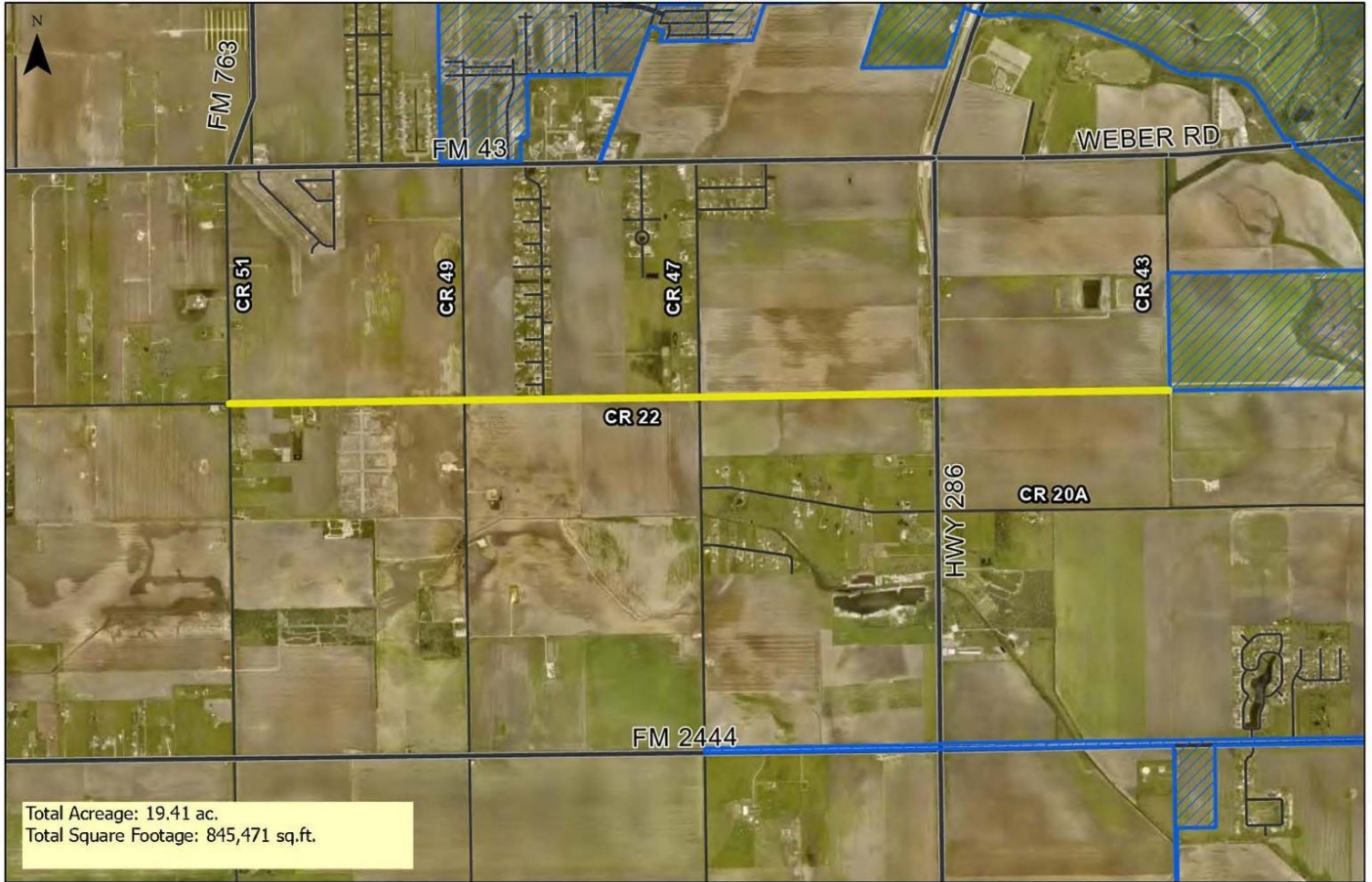
BEGINNING at a point at the intersection of the east right-of-way line of County Road (CR) 51 and the north right-of-way line of CR 22, for the northwest corner of the tract,

THENCE east along the north right-of-way line of CR 22 to the intersection of the west right-of-way line of CR 43;

THENCE south along the west right-of-way line of CR 43 to the intersection of the south right-of-way line of CR 22;

THENCE west along the south right-of-way line of CR 22 to the east right-of-way line of CR 51;

THENCE north along the east right-of-way line of CR 51 to the north right-of-way line of CR 22, the **POINT OF BEGINNING**.



- Proposed Annexation
- City Limits

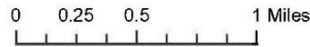


Exhibit A
 Accompanying Map
 City of Corpus Christi