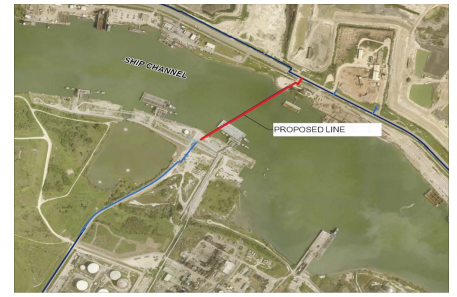


FY 25 thru FY 27

Capital Improvement Plan Project Pages

Corpus Christi, Texas



Project # 18156
Project Name Ship Channel Water Line Relocation

Contact	Director of Corpus Christi Water	Department	Water
Type	Improvement/Additions	Category	Water Distribution
Priority	Priority Level 1	Status	Active
Useful Life	40 years	Council District	1

Description

This project is to relocate the existing two 16-in water line crossing the Ship Channel at the Avery Point. The U.S Army Engineering District, Galveston (USAED) will soon commence the deepening and widening of the Corpus Christi Ship Channel. This project is to relocate the existing two 16-in water line crossing the Ship Channel at the Avery Point as required by the USAED to facilitate the construction of Ship Channel deepening. The demolition of the existing two 16-in water lines was planned by the Utilities in-house engineering. City has requested a Consultant Engineer to evaluate the relocation options. This is a 50/50 cost sharing project between the city and the Port of Corpus Christi.

Justification

This project was a necessary component of the deepening and widening project for the Corpus Christi Ship Channel.

Expenditures	Prior	FY 25	FY 26	FY 27	Total
Construction/Rehab	10,734,369	0	0	0	10,734,369
Design	4,239,496	0	0	0	4,239,496
Eng, Admin Reimbursements	906,183	0	0	0	906,183
Total	15,880,048	0	0	0	15,880,048

Funding Sources	Prior	FY 25	FY 26	FY 27	Total
Grant - Port of Corpus Christi	7,940,024	0	0	0	7,940,024
Revenue Bonds	7,940,024	0	0	0	7,940,024
Total	15,880,048	0	0	0	15,880,048

Budget Impact

The operational budget impact will be favorable as reliability of service will improve and the need for emergency repairs will decrease. The Port of Corpus Christi is funding 50% of this project.