

Professional Services Contract Amendment - Mary Rhodes Pipeline Phase I Condition Assessment

Nicholas J. Winkelmann, P.E.
Chief Operating Officer - Corpus Christi

April 28, 2026

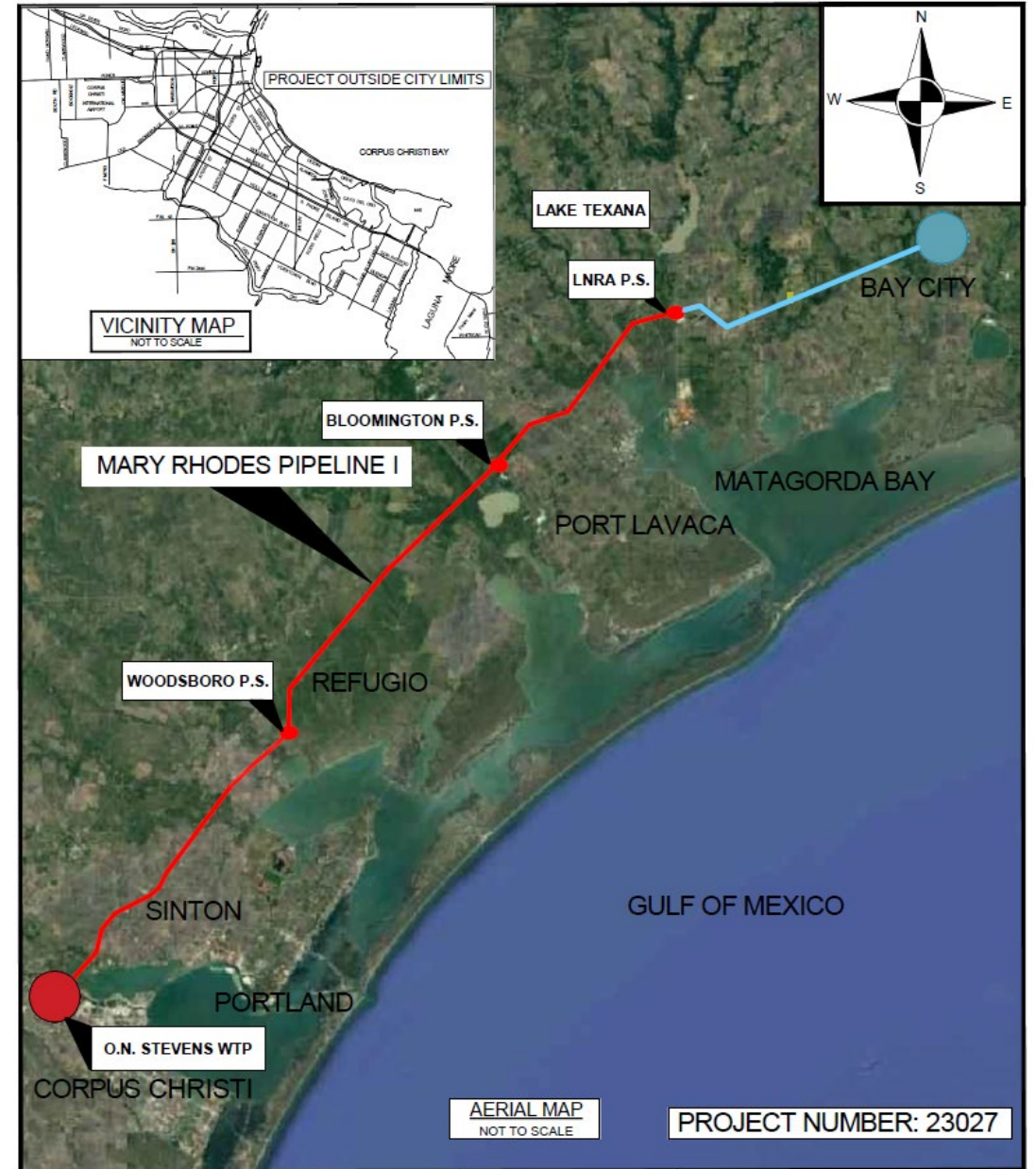
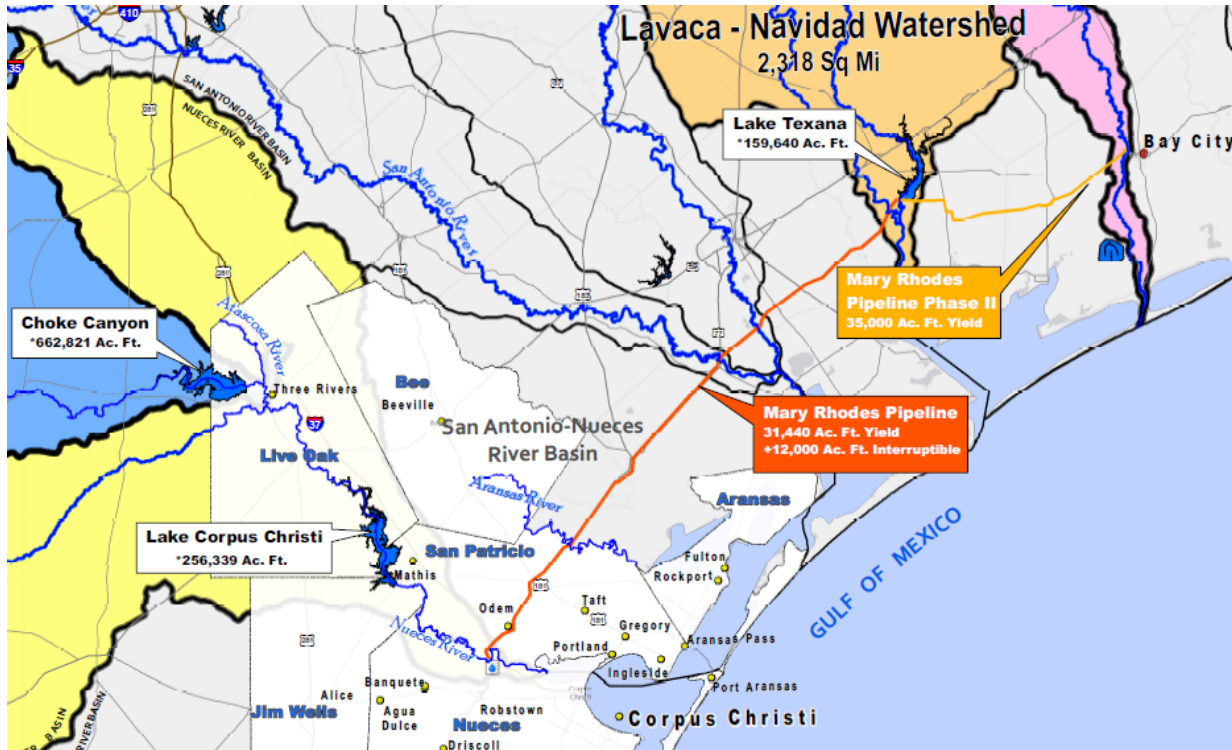


Mary Rhodes Pipeline Phase I

- The City has a contract with the Lavaca Navidad River Authority (LNRA) to purchase water from Lake Texana
- The City of Corpus Christi owns and operates Mary Rhodes Pipeline (MRP) Phase I, which transports raw water 101 miles from Lake Texana in Edna, Texas to the O.N. Stevens Water Treatment Plant (ONSWTP)
- MRP Phase I was put into service in 1998 and serves as a critical water supply line, providing approximately 70 MGD under normal operating conditions
- MRP Phase I has two booster pump stations, located in Bloomington and Woodsboro, to assist with high-flow pumping conditions



Mary Rhodes Pipeline



Professional Services Contract Amendment

Further assessment of MRP Phase I is **necessary** to evaluate the condition and capacity of the pipeline under various operational scenarios, including the addition of flows from groundwater sources.

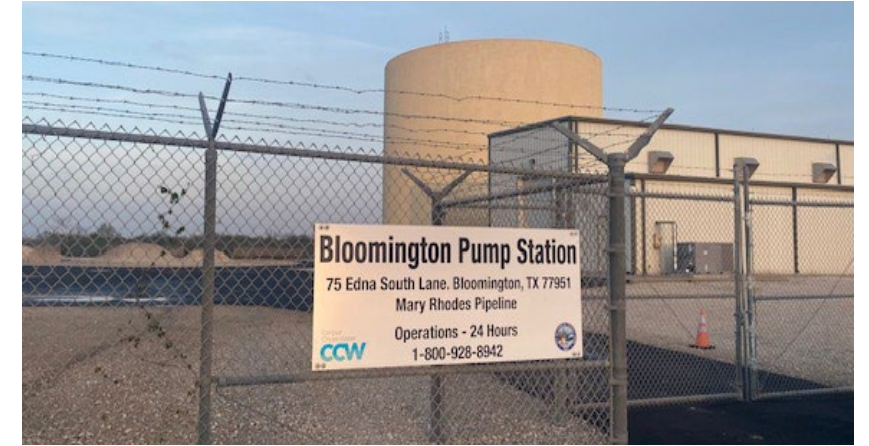
The assessment will provide findings and recommendations to support additional water flow through the system, improve pipeline conveyance efficiency, extend the pipeline's useful life, and reduce maintenance costs by implementing proactive measures to protect pipeline integrity.

- Amendment No. 3 will be utilized to:
 - **Coordinate integration of the Evangeline groundwater source into MRP Phase I**
 - Perform a comprehensive capacity analysis of MRP Phase I pump stations
 - Provide a detailed assessment of pressure exceedance areas within the pipeline
- This amendment also provides additional engineering support to assist with ongoing MRP Phase I system analysis and operational coordination

Project Scope

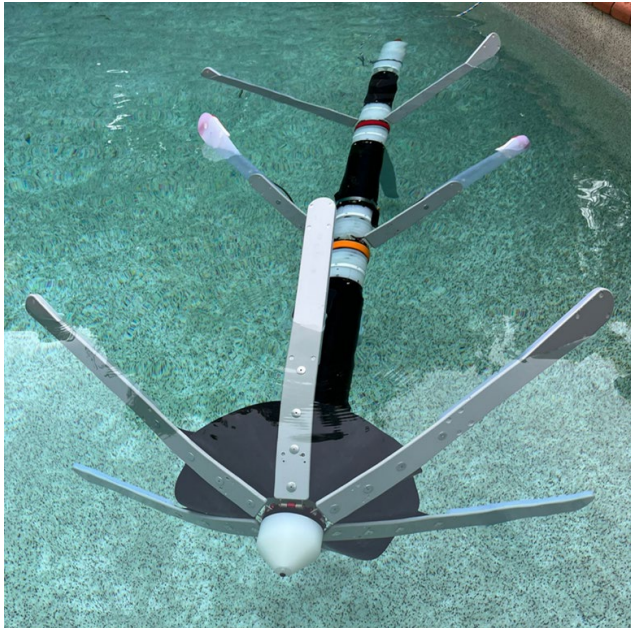
HDR will perform multiple tasks to coordinate the integration of 24 MGD additional flow from the Evangeline groundwater supply program into the MRP conveyance system

- Review MRP Phase I hydraulic conditions
- Evaluate potential pump station modifications
- Explore the possibility of constructing a new MRP pump station at the Evangeline property
- Recommend pumping strategies to support efficient conveyance of additional flows
- Determine water storage requirements for the balancing tanks to support MRP Phase I flows up to 100 MGD

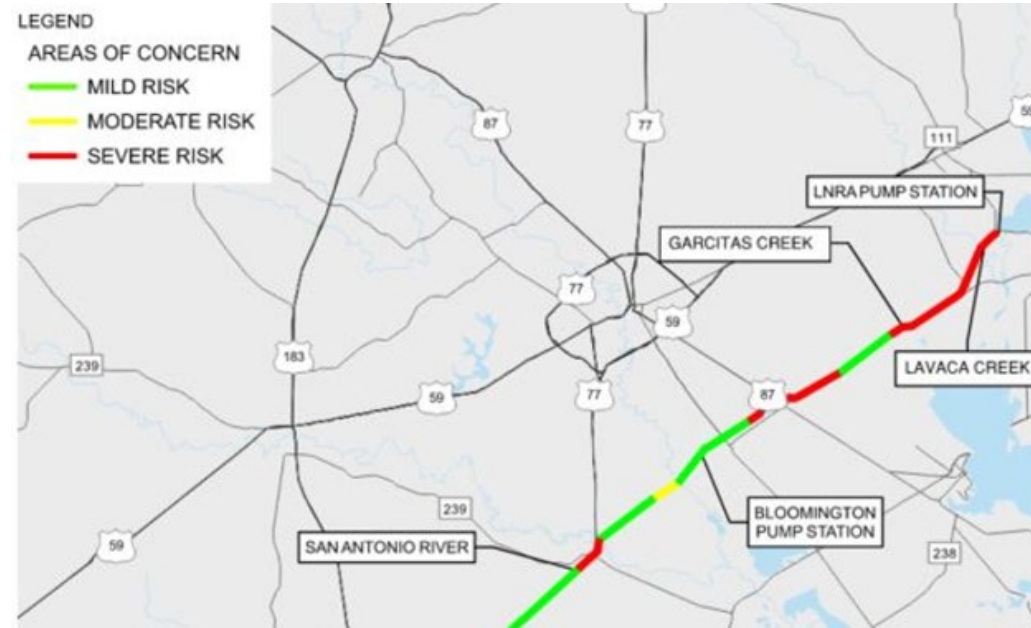


Project Scope

The subconsultant, Insight Water, will perform an internal condition assessment using an advanced tool with sonar and pressure sensors to more precisely locate potential debris, blockages, and air pockets suspected of causing pipeline pressure exceedances between the LNRA Pump Station and the Bloomington Pump Station



Internal Assessment Tool



Pressure Exceedance Areas

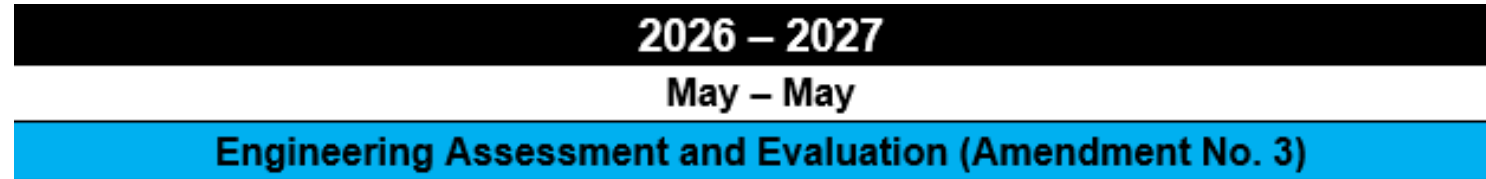
Photos courtesy of HDR, Inc.



Debris Found in Pipeline

Potential obstructions causing decreased pipeline conveyance capacity may include sediment, biofilm, invertebrates, construction materials, debris, or pipe damage

Project Timeline



Projected schedule reflects City Council award on April 28, 2026, with anticipated assessment completion in May 2027.

Staff Recommendation

Staff recommends approval of the professional services contract amendment with HDR, Inc. in the amount of \$474,896.00 for a total contract value not to exceed \$3,055,157.00 for the Mary Rhodes Pipeline Phase I Condition Assessment project, with funding available through the Raw Water Capital Fund.

The top half of the slide features four horizontal, wavy bands of varying shades of blue, creating a dynamic, water-like effect.

Thank you!