

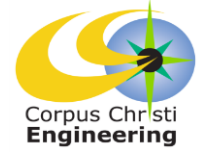
Southern Minerals Road BOND 2014



Council Presentation
October 27, 2015

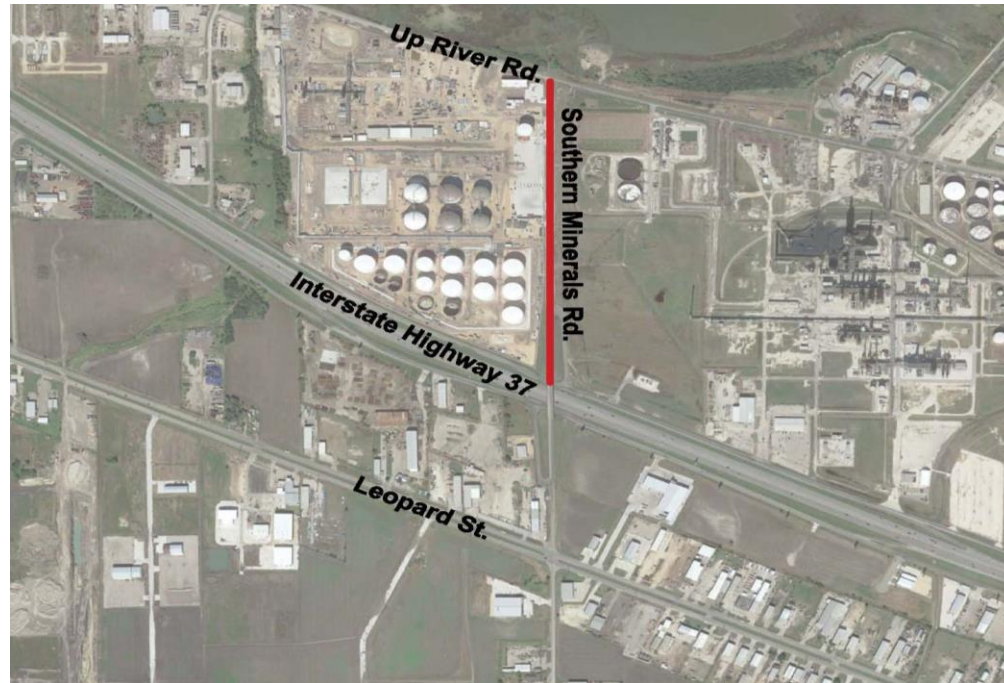
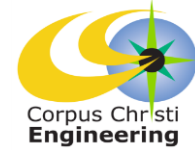


Project Location



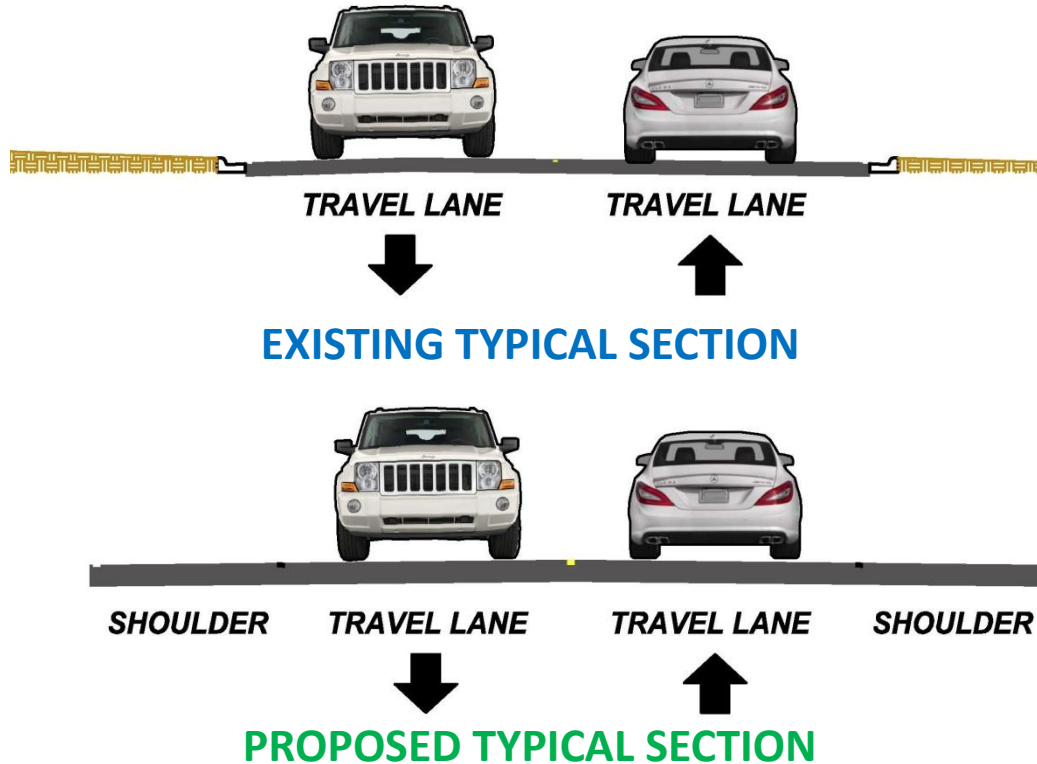
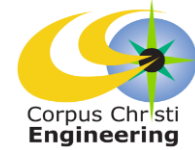


Project Layout



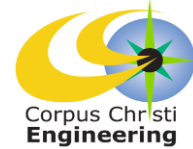


Project Section





Project Scope

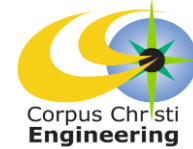


Project includes:

- Full-depth re-construction of a 2- lane roadway, with widened 8-ft paved shoulders
- Concrete pavement and markings
- Utilities with new water line, storm water elements and gas valve adjustments
- Land acquisition and Right of way dedication
- Driveway replacement



Project Schedule



2015												2016						
Feb	Mar	Apr	May	Jun	Jul	Aug	Sep	Oct	Nov	Dec	Jan	Feb	Mar	Apr	May	Jun	Jul	
Design								Bid		Construction								

Project Estimate: 240 Calendar Days \approx 8 Months

*** The project is planned for substantial completion in late summer 2016 before the next school year starts.**