



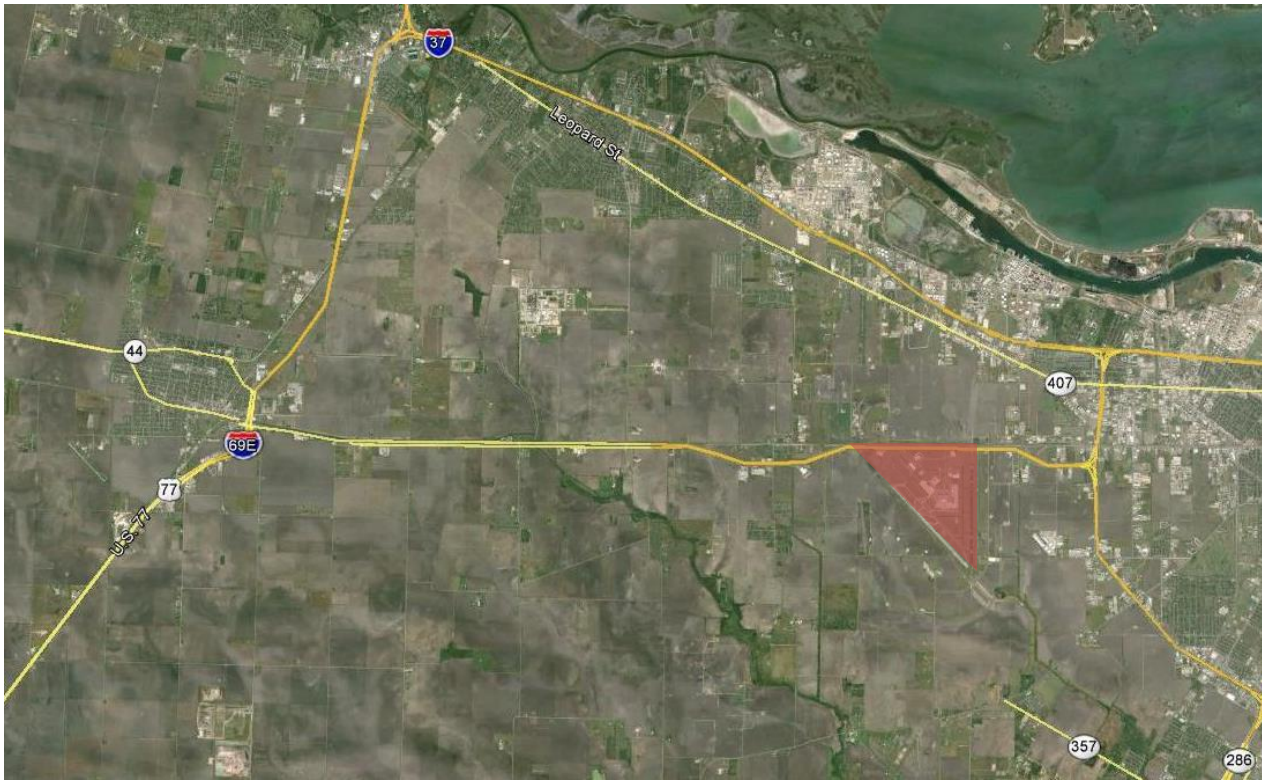
Corpus Christi International Airport Runway 17-35 Connection Displacement and Connecting Taxiways Project



Council Presentation
May 12, 2015

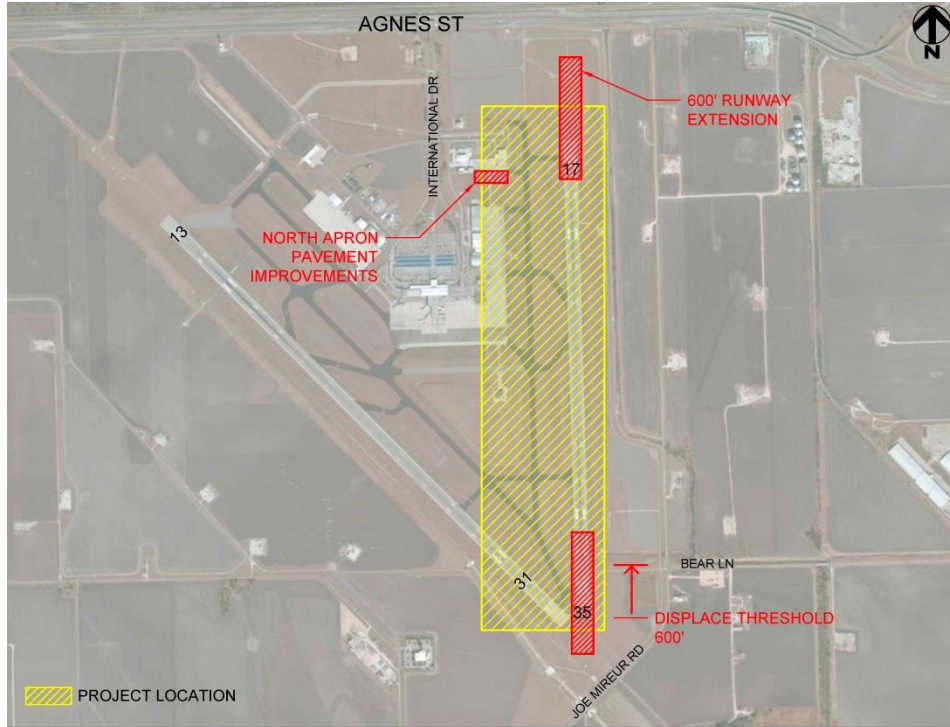


Project Location





Project Scope

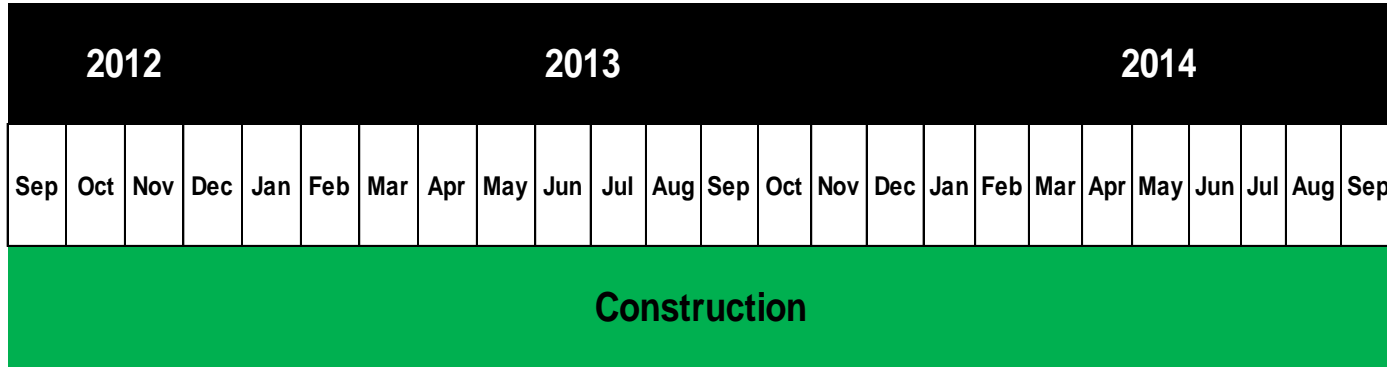


Project includes:

- Extend Runway 600' North
- Displace South Threshold (35)
- North Apron Pavement Improvements
- Lighting & Navigation Aide Upgrades



Project Schedule



Project Construction Estimate: 730 Calendar Days \approx 24 Months

Project Substantially complete: September 2014



Project Budget



FUNDS AVAILABLE:	Amount
FAA Grant	\$ 16,345,505.00
Airport CIP Reserves (match)	\$ 1,992,616.93
TOTAL AVAILABLE:	\$ 18,338,121.93
FUNDS REQUIRED:	
Construction (Bay LTD).....	\$ 12,841,419.06
Change Orders 1 thru 14.....	\$ 2,519,602.30
Change Order No. 15.....	\$ 298,651.24
<u>Engineer Fees:</u>	
Engineer - Design (KSA Engineers, Inc.)*.....	\$779,550.00
Construction Mgmt & Inspection, (KSA Engineers, Inc.)**.....	\$495,000.00
Geotechnical Eng and Materials Testing (KSA Engineers, Inc. / Rock Eng)**.....	\$150,000.00
Construction Inspection and Surveying (KSA Engineers, Inc. / LNV Eng)**.....	\$355,000.00
<u>Reimbursements:</u>	
Contract Administration (Contract Preparation/Award/Admin).....	\$ 321,035.48
Engineering Services (Project Mgt/Constr Mgt/Traffic Mgt).....	\$ 321,035.48
Finance Reimbursements.....	\$ 192,621.29
Misc. (Printing, Advertising, etc.).....	\$ 64,207.10
TOTAL	\$ 18,338,121.93
ESTIMATED BUDGET BALANCE	\$ (0.00)