



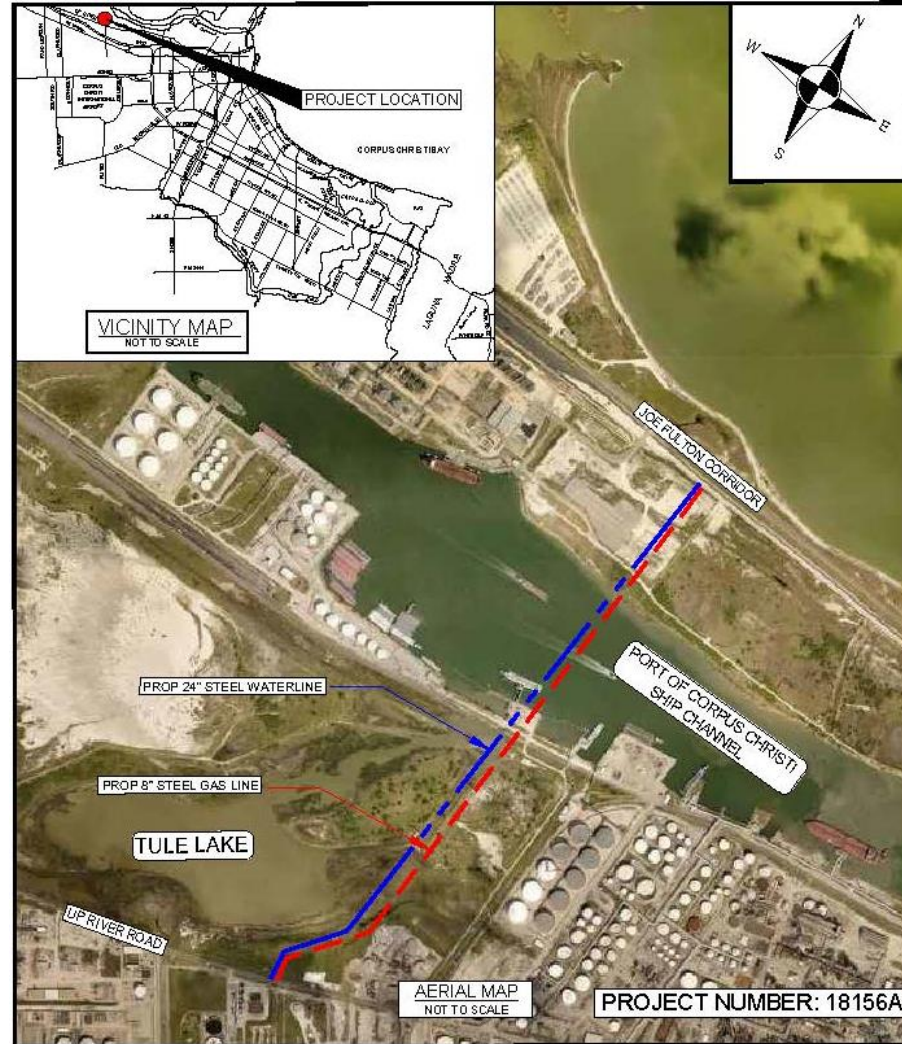
Ship Channel Waterline and Gas Line Crossing



Council Presentation
December 12, 2023



Project Location





Project Scope

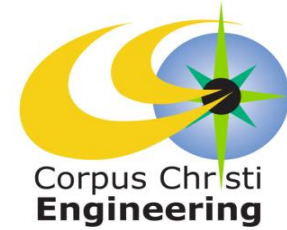


Proposed improvements is as follows:

- Project includes installation of approximately 6,800 linear feet of 24-inch waterline beneath the Ship Channel at Tule Lake via HDD, open trench, and auger bore construction.
- Project also includes the installation of approximately 6,860 linear feet of 8-inch gas line via HDD and open trach construction.



Project Schedule



2020 - 2023	2023	2024 - 2025
February - January	February - December	January - March
Design	Bid/Rebid/Award	Construction

Projected Schedule reflects City Council award in December 2023 with anticipated completion in March 2025.