

London Independent School District Property Annexation

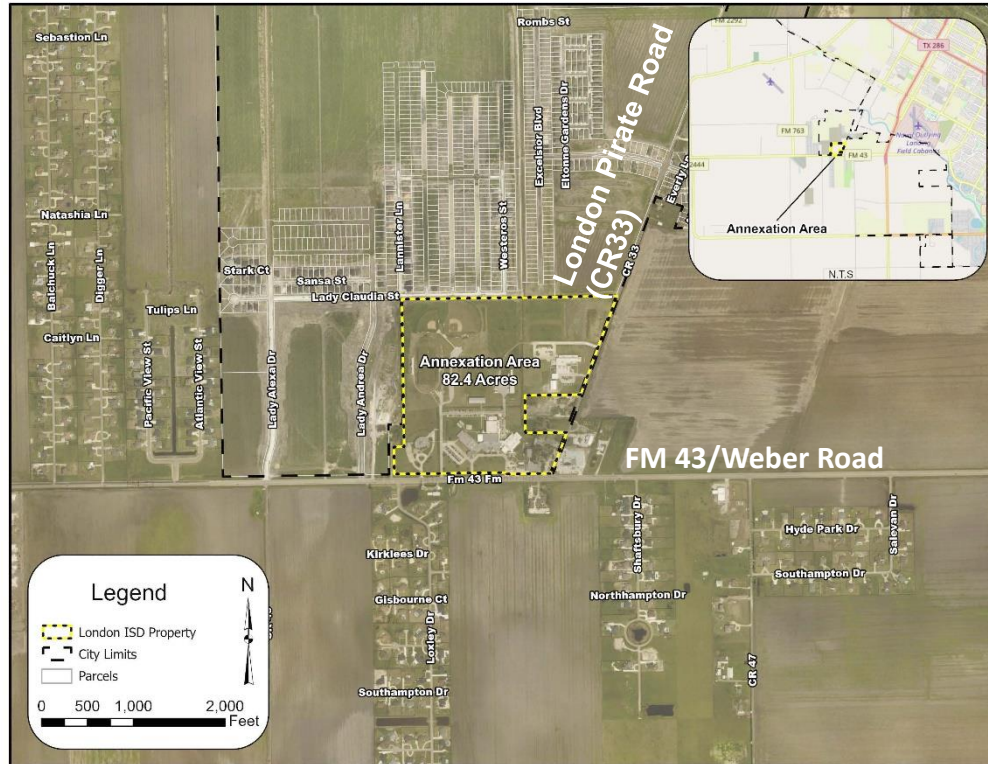
Public Hearing and Ordinance



City Council Presentation
February 13, 2024



Annexation Petition: 82.40-acre tract



C:\Users\alvarezj@corpuschristi.tx.us\Desktop\GIS\Map of City Limits\GIS\Development Services\Map of City Limits\ANNEXATION_PETITION\ANNEXATION_PETITION_CIT_EDIT_HR.aprx



Wastewater facilities





Background

- The District currently receives City water service.
- District Bond funds for a stadium complex, sports field creation, and school additions were approved by London District voters in Fall 2022.
- The District determined that tying current and proposed facilities into the City wastewater system would be the best path toward meeting the current and future expansion needs.
- The City requires platting and annexation before an existing facility connects to additional city utility lines.



Fiscal Impact Analysis

- The District property is exempt from ad valorem taxes due to receiving a public school district exemption.
- Therefore, the annexation of the property will have a net negative fiscal impact on the City general fund departments.



Post-Annexation Changes

City Department	Monthly Revenue	Additional Service/ Expense	Notes
CCW	+\$1,362	Wastewater collected at the site	Currently on septic, additional \$1,620 wastewater fee less \$258 reduction in-City water rate; anticipated additional water use campus improvements
Stormwater	+\$3,000	None	Fee based on land use type for 82-acre site; City currently maintains London Pirate Road and drainage channel.
Solid Waste	None	None	Districts all contract for private service
Police	None	Marginal	ISD's have private security
Fire	None	Case by Case	Will be added to Fire Service District of in-City homes to the north. Cost vary by type of call (staff needed, equipment sent, duration of event, etc..).
Animal Control	None	Marginal	As a comparison, West Oso ISD had 10 calls in 2023, similar size campus and student population.
Transportation	None	Traffic may provide guidance on issues that arise	No additional roadways annexed
Library	None	None	District has a Library
Parks and Recreation	None	None	District has facilities, services for students
Code Enforcement	None	Marginal	Based on other ISD response data we should expect 4 visits annually.
Annual Totals	\$52,344	Varies	

*No new revenue added to other General Fund Departments



Staff Recommendation

Approval of the ordinance to annex
82.40 acres as petitioned by the London
Independent School District



Questions?
