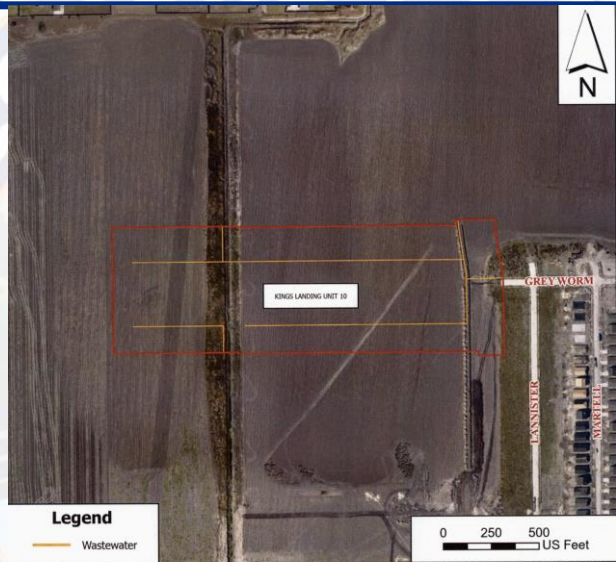


Wastewater Trunk Line Construction & Reimbursement Agreement

Ordinance authorizing a Wastewater Trunk Line Construction and Reimbursement Agreement up to \$102,830.40 with MPM Development, LP to construct a wastewater trunk line related to King's Landing Unit 10 subdivision located north of the Lady Alexa Dr. and Lady Claudia St. intersection; and authorizing future transfer and appropriation of Water and Wastewater Trust Fund revenue up to \$102,830.40 to reimburse the developer in accordance with the agreement. (District 3).

Location Map



Location Map
Kings Landing Unit 10
Proposed Waste Water Improvements

PROJECT LOCATION

US 101

Lady Clausa St

Grey Worm

Total Reimbursement Estimate

Kings Landing Unit 10 - Wastewater Cost Estimate						12/24/2024
SANITARY SEWER ITEMS						
ITEM	DESCRIPTION	QUANTITY	UNIT	COST	TOTAL	
1	15 INCH PVC PIPE	273	LF	\$195.00	\$53,235.00	
2	FIBERGLASS MANHOLE	1	EA	\$20,000.00	\$20,000.00	
3	DEEP CUT CONNECTION	1	EA	\$10,000.00	\$10,000.00	
					\$83,235.00	
MISC ITEMS						
ITEM	DESCRIPTION	QUANTITY	UNIT	COST	TOTAL	
1	TRENCH SAFETY FOR EXCAVATIONS (SANITARY SEWER AND STORM SEWER PIPES OF ALL SIZES)	273	LF	\$9.00	\$2,457.00	
					\$2,457.00	
					SUBTOTAL \$85,692.00	
					ENGINEERING, SURVEYING, & TESTING (11%) \$9,426.12	
					CONTINGENCY (7%) \$5,998.44	
					BOND (2%) \$1,713.84	
					TOTAL \$102,830.40	

Trust Fund Balance

Total Combined Committed Trust fund balance as of 02/28/2025 is overcommitted by approximately **\$2,625,000**

At the end of FY24 the funds were over committed by **\$11,184,923.57**. However, as part of the FY2025 Adopted Budget Development, City staff recommended, and City Council approved a CCW funds transfer of \$9.2M from fund balance to make the Trust Fund whole (\$1.8M from Water and \$7.4M from Wastewater). The following project approvals contributed to the over commitment:

Project/Developer	Project Total	Project/Developer	Project Total
Royal Creek Estate 7 & Amendment (Water)	\$219,096.24	River Ridge Unit 4 (Wastewater)	\$2,624,738.59
Royal Creek Estate 8 & Amendment (Water)	\$374,023.38	Saratoga Ridge Subdivision (Wastewater)	\$4,131,000.00
Caroline Heights Unit 1 (Water)	\$27,608.55	Merida Plaza (Wastewater)	\$1,274,863.04
Westwood Heights Unit 4 (Water)	\$36,731.71	Haven (Wastewater)	\$1,978,937.16
Oso Creek Corner (Water)	\$514,522.75	Royal Oak South (Wastewater)	\$365,028.94
Queen's Crossing Unit 2 (Water)	\$285,914.93	Royal Oak South (Water)	\$141,108.94
King's Landing Unit 5 (Water)	\$131,833.90	King's Landing Unit 9 (Water)	\$131,835.50
Saratoga Ridge Subdivision (Water)	\$899,000.00	Azali Estates Unit 3 (Water)	\$136,870.31
Starlight Estates Unit 8 (Water)	\$393,888.30	Kaspian Unit 1 (Water)	\$1,245,538.00

Trust Fund Balance

If City Council approves an additional 2 requests it would result in the fund being overcommitted by **\$2,625,000**

The following projects approvals make up the new over commitment:

Project/Developer	Project Total
King's Landing Unit 9 (Wastewater)	\$77,285.28
Waldron Subdivision (Wastewater)	\$524,660.00

Recommendation

Approval

The request submitted by the applicant is in accordance with UDC 8.5 Trust Fund Policy.