

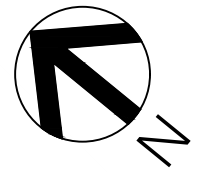


SIX POINTS IMPROVEMENTS

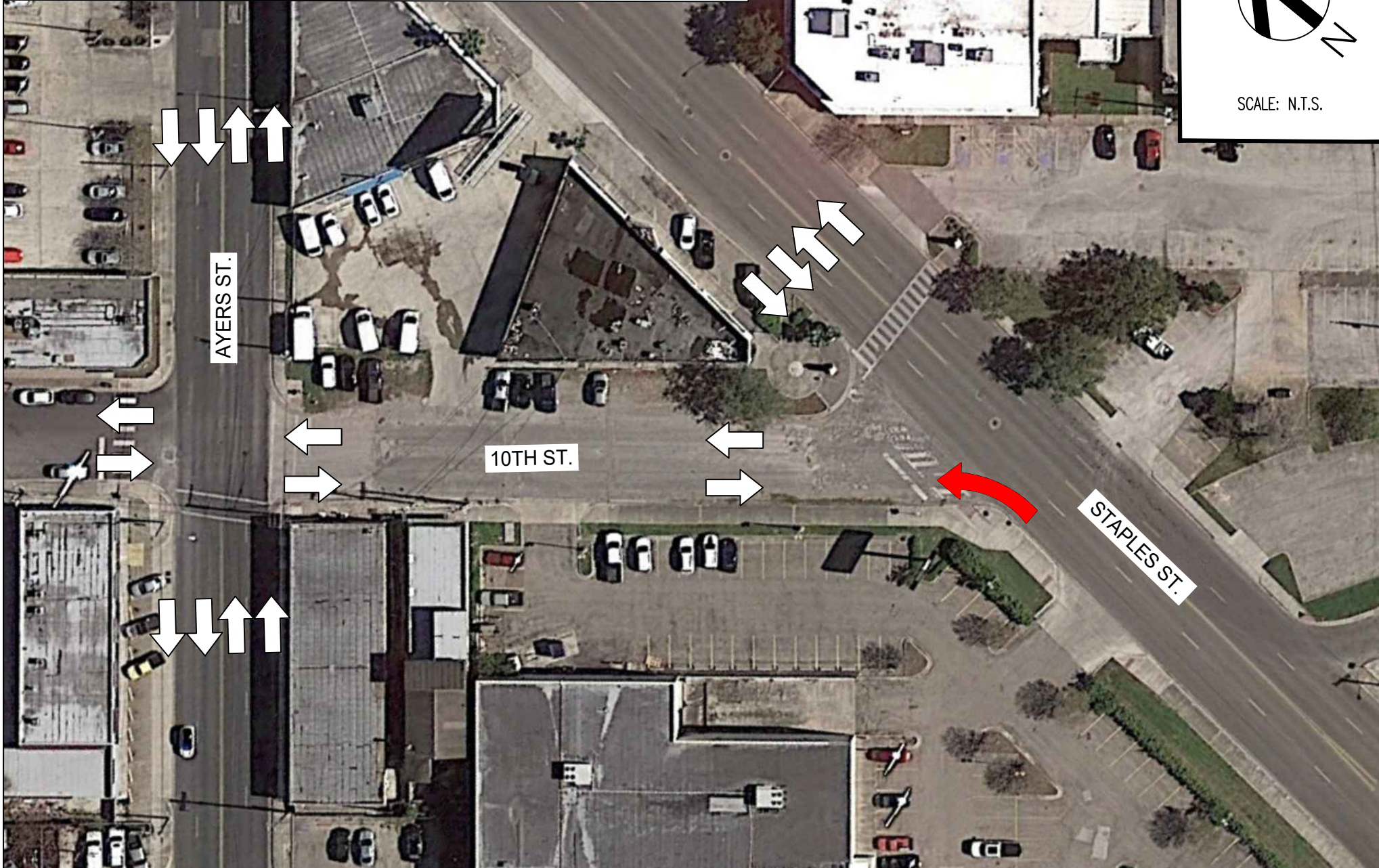
CITY COUNCIL EXHIBIT
CITY OF CORPUS CHRISTI, TEXAS
DEPARTMENT OF ENGINEERING SERVICES



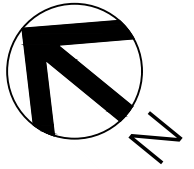
Existing Traffic Flow: Two-Way Flow



SCALE: N.T.S.



Proposed Traffic Flow: One-Way Flow (Southbound Direction)



SCALE: N.T.S.

