



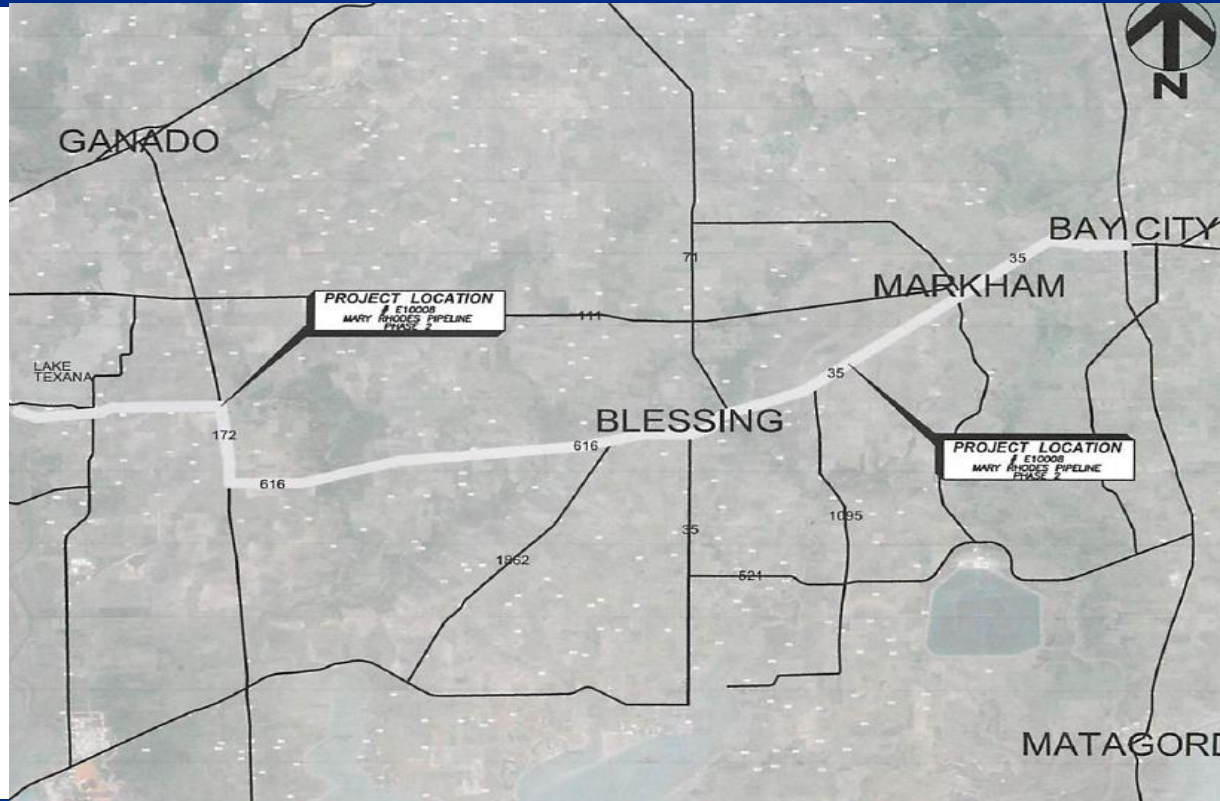
Mary Rhodes Pipeline Phase 2 Partial Assignment of Water Pipeline Easement



Council Presentation
October 13, 2015

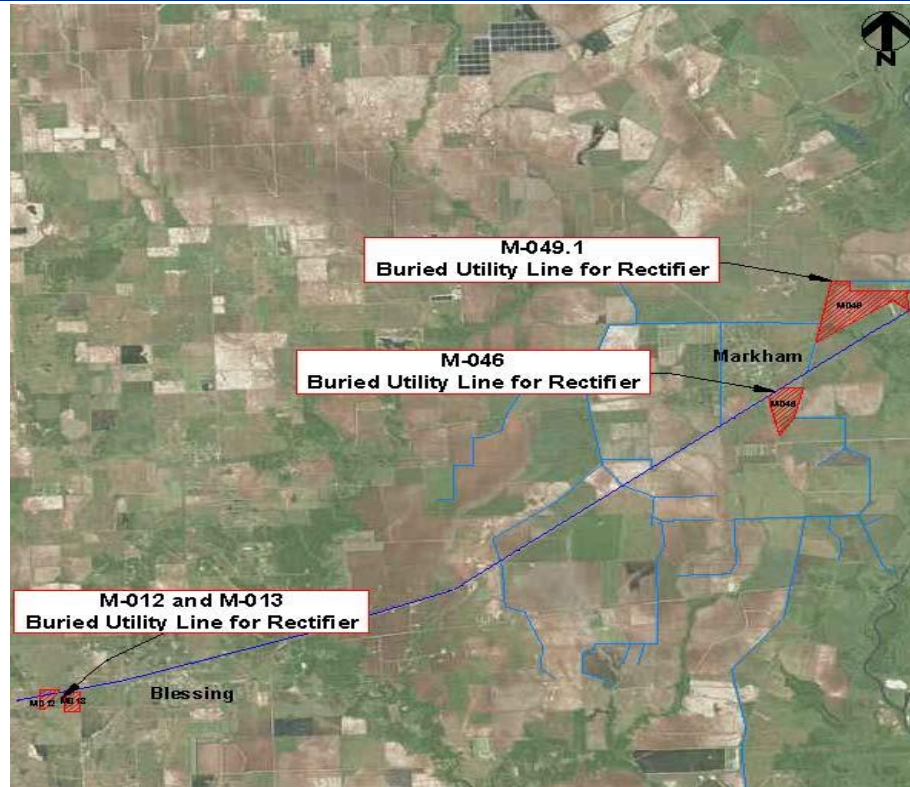


Project Location





Easement Exhibit





Ordinance Background



Easements Agreements of Mary Rhodes Pipeline Phase 2

Project:

- ✓ A series of Water Pipeline Easement and Right of Way Agreements (Letter Agreements) with Land Owners ("Grantor") in Jackson County and Matagorda County, Texas;
- ✓ Buried utility lines for rectifiers along the Mary Rhodes Pipeline Easement and Right of Way are needed to provide cathodic protection for water pipeline;
- ✓ AEP is installing buried utility lines to feed power to these rectifiers and requires an easement for each of these lines.

Ordinance Request:

- ✓ Authorization to City Manager to approve and sign multiple Partial Assignment of Water Pipeline Easement Agreements with AEP.