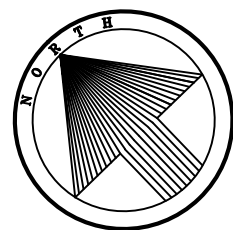
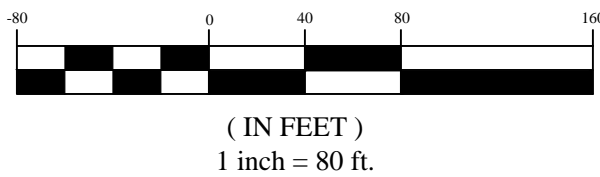


GRAPHIC SCALE

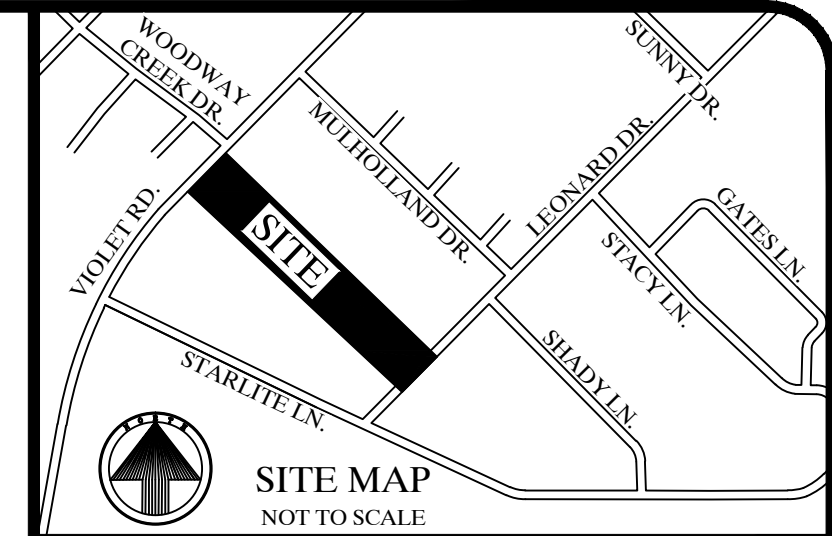


UTILITY PLAN FOR NUECES GARDENS NO. 1 LOTS 18A, 18B, 18C, 18D, & 18E

BEING A REPLAT OF NUECES GARDENS 1, LOT 18, AS SHOWN ON THE PLAT RECORDED IN VOLUME 10, PAGE 22, MAP RECORDS OF NUECES COUNTY, TEXAS AND DESCRIBED IN A DEED RECORDED IN DOCUMENT NO. 2021033122, OFFICIAL RECORDS OF NUECES COUNTY, TEXAS.

C1
R = 2,277.33'
L = 36.35'
TAN = 18.18'
Δ = 00° 54' 53"
CB = N44° 31' 20"E, 36.35'

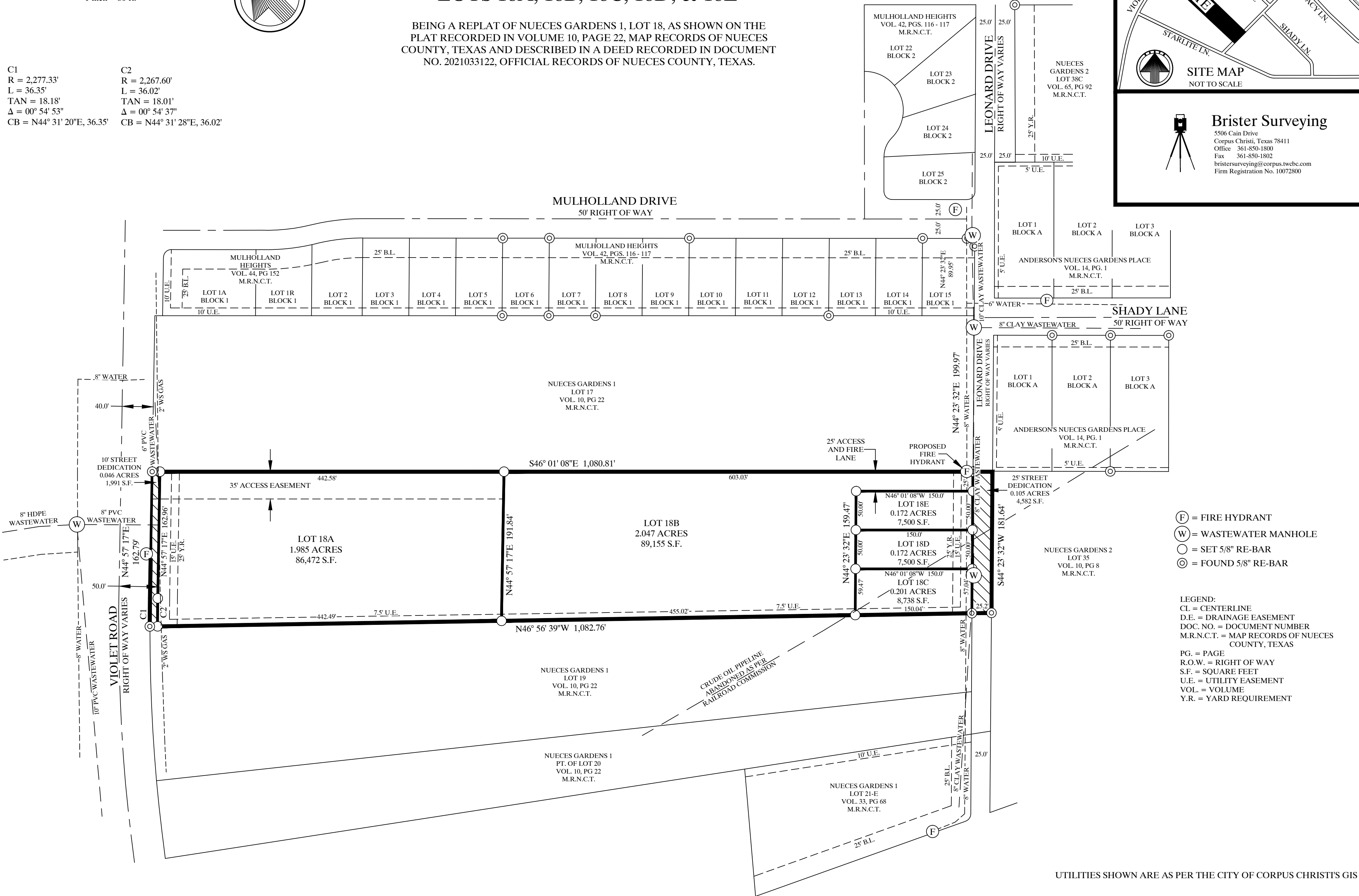
C2
R = 2,267.60'
L = 36.02'
TAN = 18.01'
Δ = 00° 54' 37"
CB = N44° 31' 28"E, 36.02'



SITE MAP
NOT TO SCALE



Brister Surveying
5506 Cain Drive
Corpus Christi, Texas 78411
Office 361-850-1800
Fax 361-850-1802
bristersurveying@corpus.twc.com
Firm Registration No. 10072800



- (F) = FIRE HYDRANT
- (W) = WASTEWATER MANHOLE
- (O) = SET 5/8" RE-BAR
- (C) = FOUND 5/8" RE-BAR

LEGEND:
CL = CENTERLINE
D.E. = DRAINAGE EASEMENT
DOC. NO. = DOCUMENT NUMBER
M.R.N.C.T. = MAP RECORDS OF NUECES COUNTY, TEXAS
PG. = PAGE
R.O.W. = RIGHT OF WAY
S.F. = SQUARE FEET
U.E. = UTILITY EASEMENT
VOL. = VOLUME
Y.R. = YARD REQUIREMENT

UTILITIES SHOWN ARE AS PER THE CITY OF CORPUS CHRISTI'S GIS