

Zoning Case #0115-02

Superior H&H Development LLC

From:

“CG-2” General Commercial District, “ON” Office District and
“RS-6” Single-Family 6 District

To:

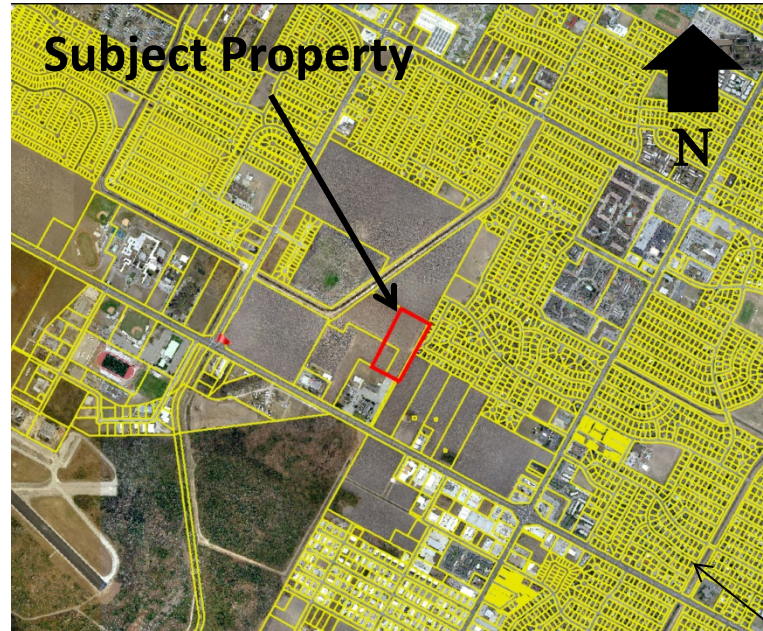
“RS-4.5” Single-Family 4.5



Planning Commission
January 14, 2015



Aerial Overview



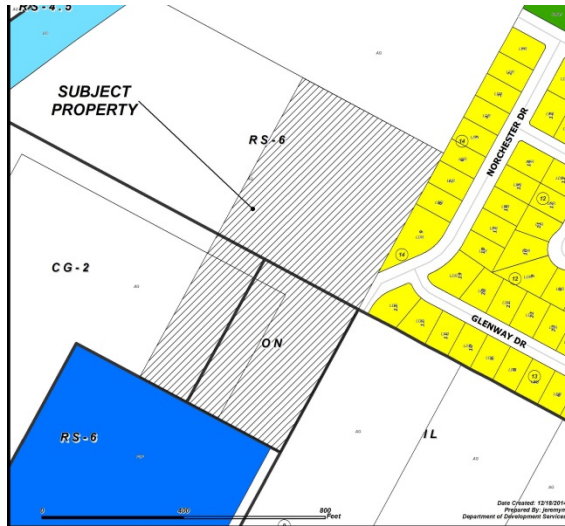


Aerial

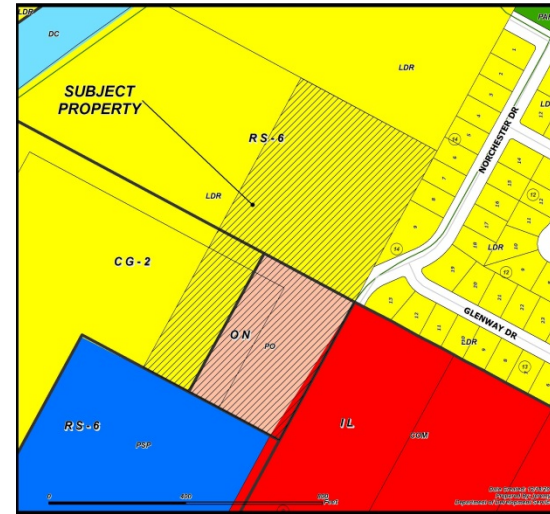








Existing Land Use



Future Land Use



- | | | |
|--|--|---|
|  Commercial |  Medium Density Residential |  Professional Office |
|  Vacant |  Low Density Residential |  Public/Semi-Public |



Site Photos

Facing East at South End of Subject Property





Site Photos

Facing West at South End of Subject Property





Site Photos

Facing North at South End of Subject Property





Site Photos

Facing South on Norchester Drive





Site Photos

Facing West at Norchester





Public Notification

66 Notices mailed inside 200' buffer
6 Notices mailed outside 200' buffer

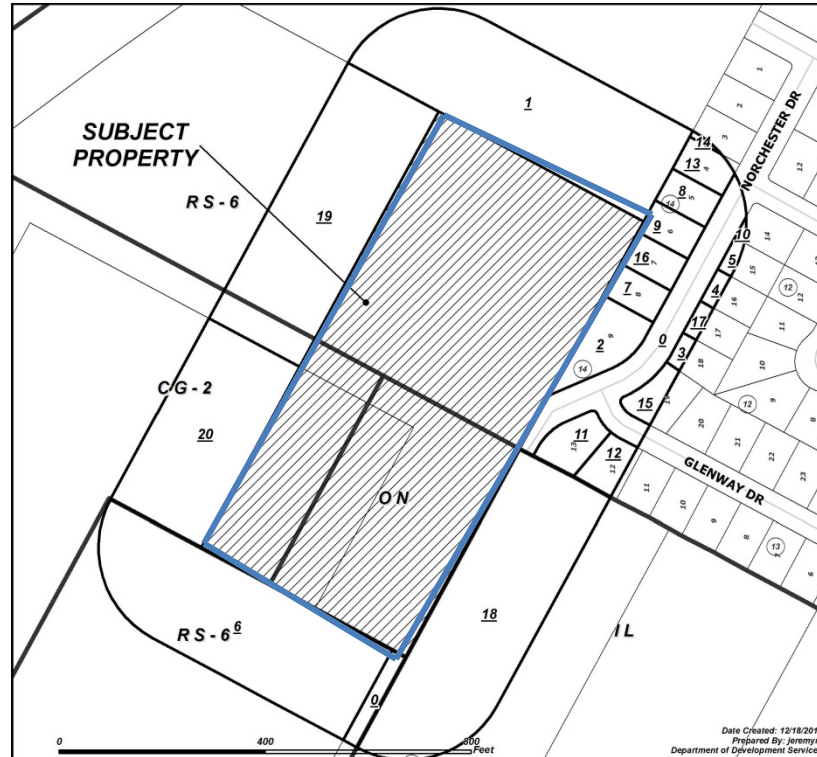
Notification Area



Opposed: 0



In Favor: 0





Staff Recommendation

Approval of the
“RS-4.5” Single-Family 4.5 District