

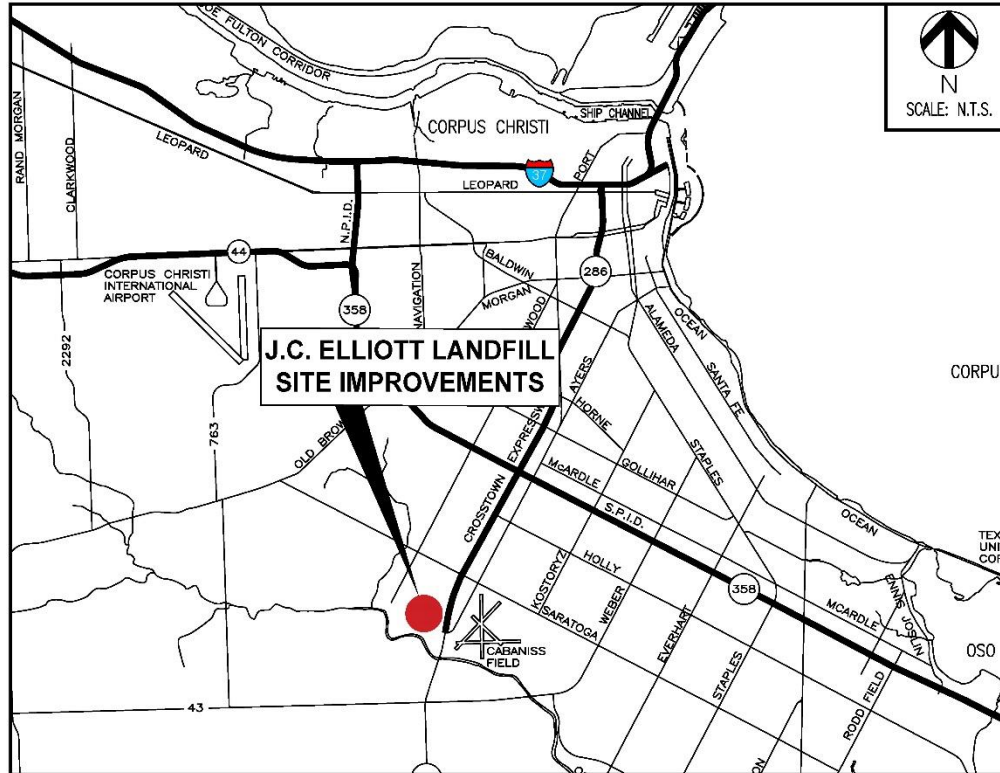
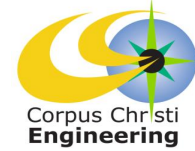
J.C. Elliott Landfill Site Improvements



Council Presentation
June 12, 2018

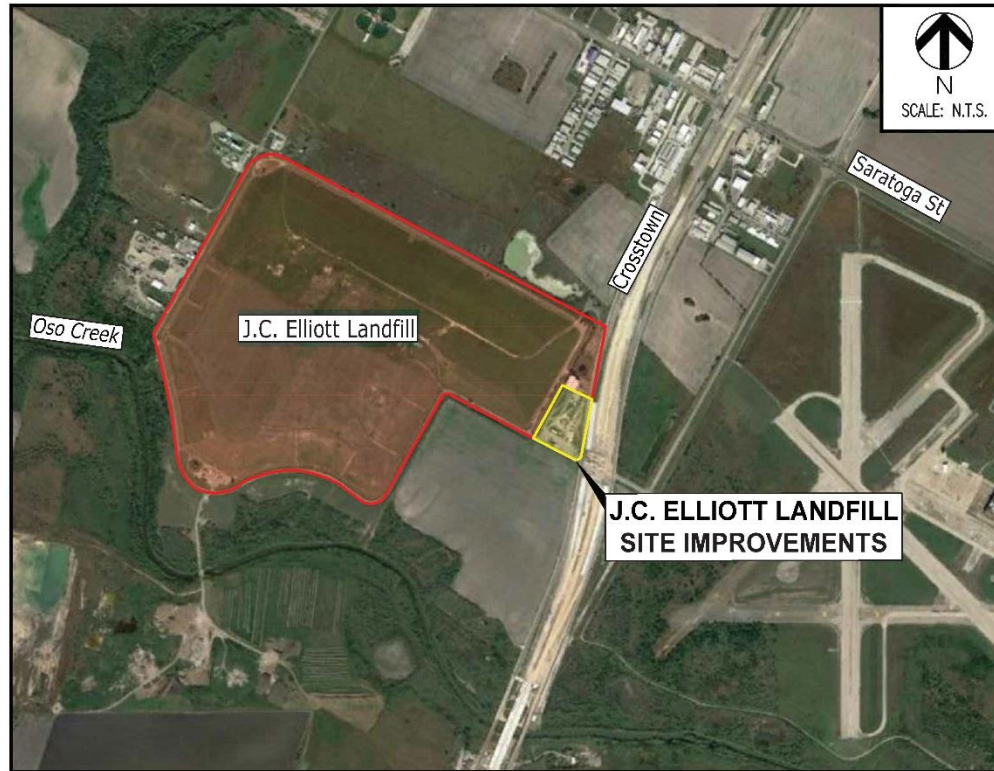
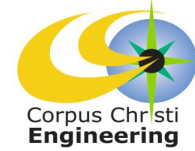


Project Location



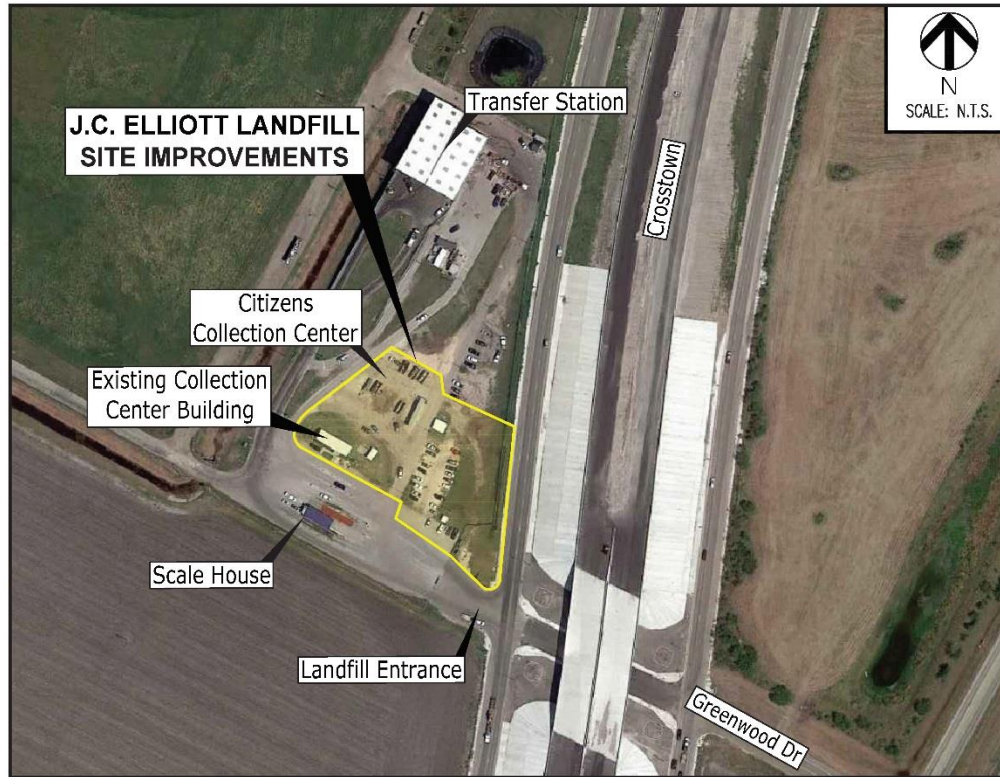
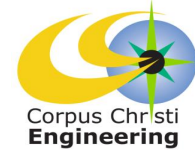


Project Vicinity



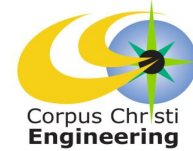


Project Vicinity





Project Scope

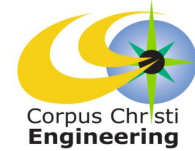


Site improvements for Citizen's Collection Center, Transfer Station and Scale House at JC Elliott Landfill to increase public safety and reduce operating cost and mileage of city refuse trucks. Improvements include:

- Pavement restoration, new markings and signage
 - Drainage Improvements
 - Wastewater underground lines with new packaged unit lift station
 - Water underground lines with new fire hydrant for fire protection
- ❖ Site Improvements consider future Collection Center Building



Project Schedule



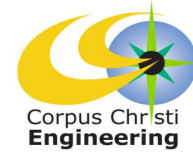
2017		2018												2019
Nov	Dec	Jan	Feb	Mar	Apr	May	Jun	Jul	Aug	Sep	Oct	Nov	Dec	Jan
Design					Bid & Award			Construction						

Construction Calendar Days: 210 \approx 7 Months



Site Photographs

May, 20th 2018 - 1/2 inch Rain Event

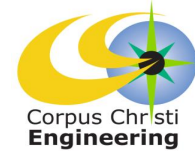


Citizen's Collection Center and Transfer Station Exit



Site Photographs

May, 20th 2018 - 1/2 inch Rain Event



05-21-2018-09:18:40

Citizen's Collection Center