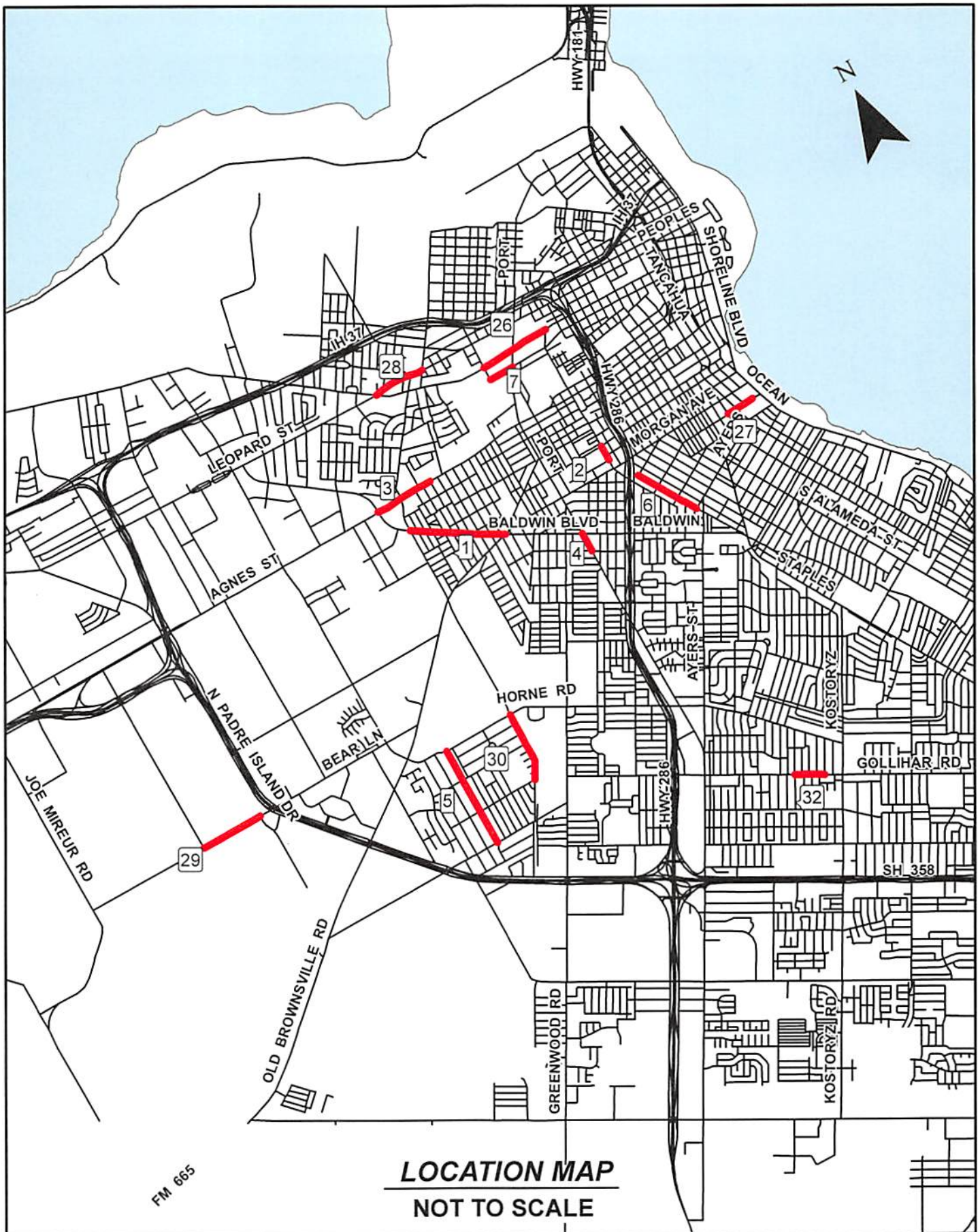


**Street Listing  
City of Corpus Christi, Texas  
Citywide Signage Upgrade**

Citywide Signage Upgrade will include the roadway signage for collector and arterial roads as identified in Delivery Order Nos. 1 - 5 in the City of Corpus Street Preventative Maintenance program. Signs considered will be within 15-feet of intersecting streets. These upgrades will consist of signage assemblies and aprons to meet TXDOT and City standards with all street name blades being 9-inch extruded with the first letter capitalized. Below are the 32 streets (approximately 475 signs) identified for these improvements and as shown on the Location Maps.

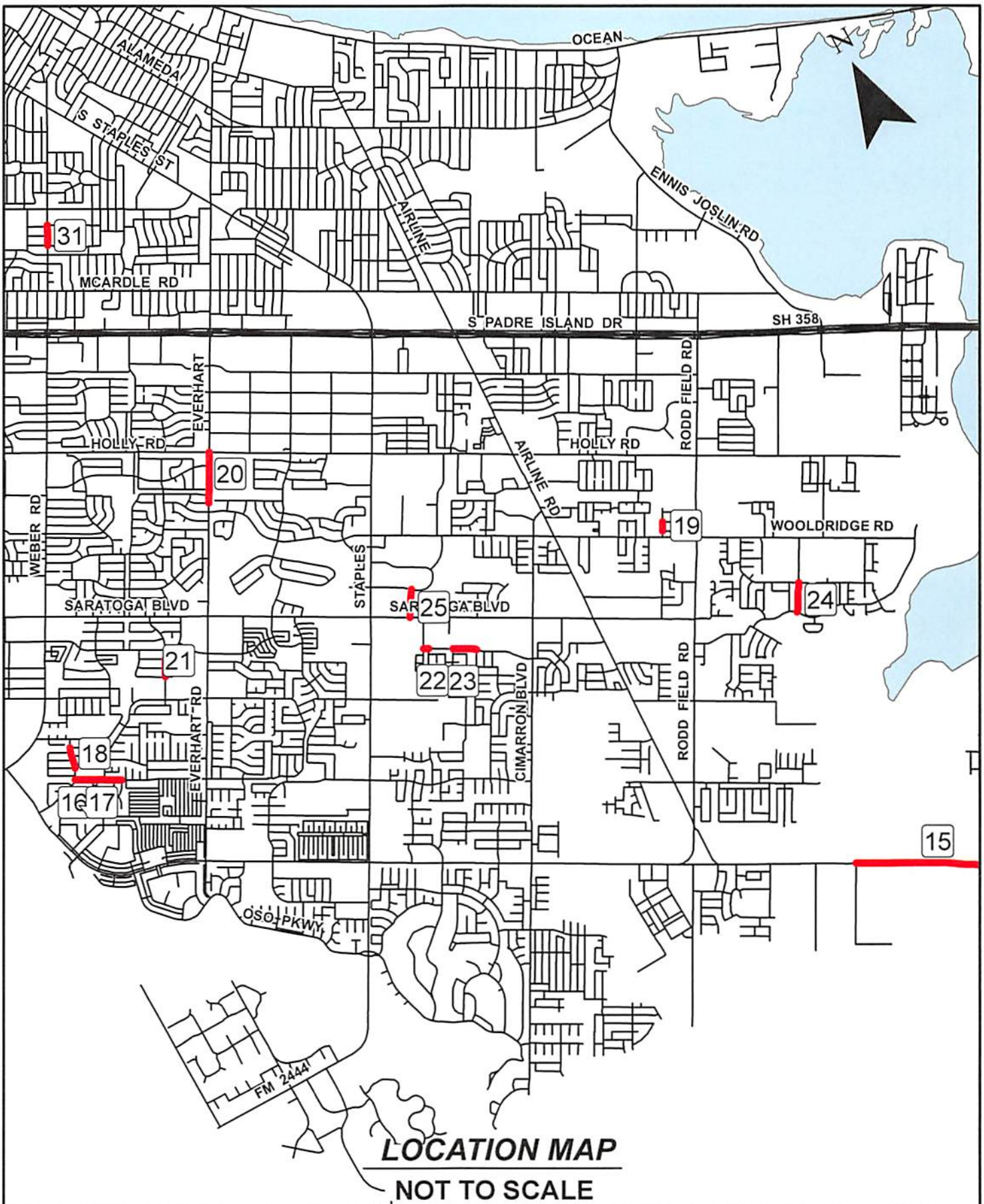
<b>Delivery Order No. 1</b>	1. Baldwin Boulevard from Airport to Morgan
	2. Nineteenth Street from Hospital to Buford
	3. Agnes Street from Shawnee to Baldwin Boulevard
	4. Port Street from Sonora to Baldwin Boulevard
	5. Angela Street from Horne Road to West Point
	6. Eighteenth Street from Isabel to Prescott
	7. Comanche from Port Avenue to Palm Street
<b>Delivery Order No. 2</b>	8. Waldron Road from Claire to Padre Island Drive
	9. Graham Road from Meeks to Flour Bluff Drive
	10. Compton Road from Waldron Road to First National
	11. Yorktown Boulevard from Oso Creek Bridge to Flour Bluff Drive
	12. Matlock Street from Behrman to McIver
	13. St. Francis Street from St. Benedict Court to Dominic Court
14. Glenoak from Flour Bluff Drive to Waldron Road	
<b>Delivery Order No. 3</b>	15. Yorktown Boulevard from Starry to Oso Creek Bridge (East)
	16. Cedar Pass Drive from Sun Valley Drive to Holly Ridge
	17. Cedar Pass Drive from Holly Ridge to Aspen Grove
	18. Sun Valley Drive from Snowmass Street to Eldora Drive
	19. Woodway Drive from Brookedge to Windbrook Lane
	20. Everhart Road from Holly Road to May Street
	21. Sanders Drive from Coody Drive to Snead Drive
	22. Dunbarton Oak from Patti Drive to Sudbury Road
	23. Dunbarton Oak from Durham Drive to Earnhart
	24. Victoria Park from Quebec to Oso Parkway
25. Spohn South from Saratoga Boulevard to Spohn Drive	
<b>Delivery Order No. 4</b>	26. Lipan Street from Palm Drive to Nineteenth Street
	27. Elizabeth Street from Second Street to Fifth Street
	28. Leopard Street from Nueces Bay to Up River Road
<b>Delivery Order No. 5</b>	29. Bear Lane from Junior Beck to Heinsohn Road
	30. Columbia Street from Horne Road to Villarreal Street
	31. Weber Road from Barnes Street to Bradford
	32. Gollihar Road from Cottage to Townsend



**Citywide Signage Upgrade -  
Street Preventative  
Maintenance**

CITY OF CORPUS CHRISTI, TEXAS  
DEPARTMENT OF CAPITAL PROGRAMS  
PAGE 1 OF 5

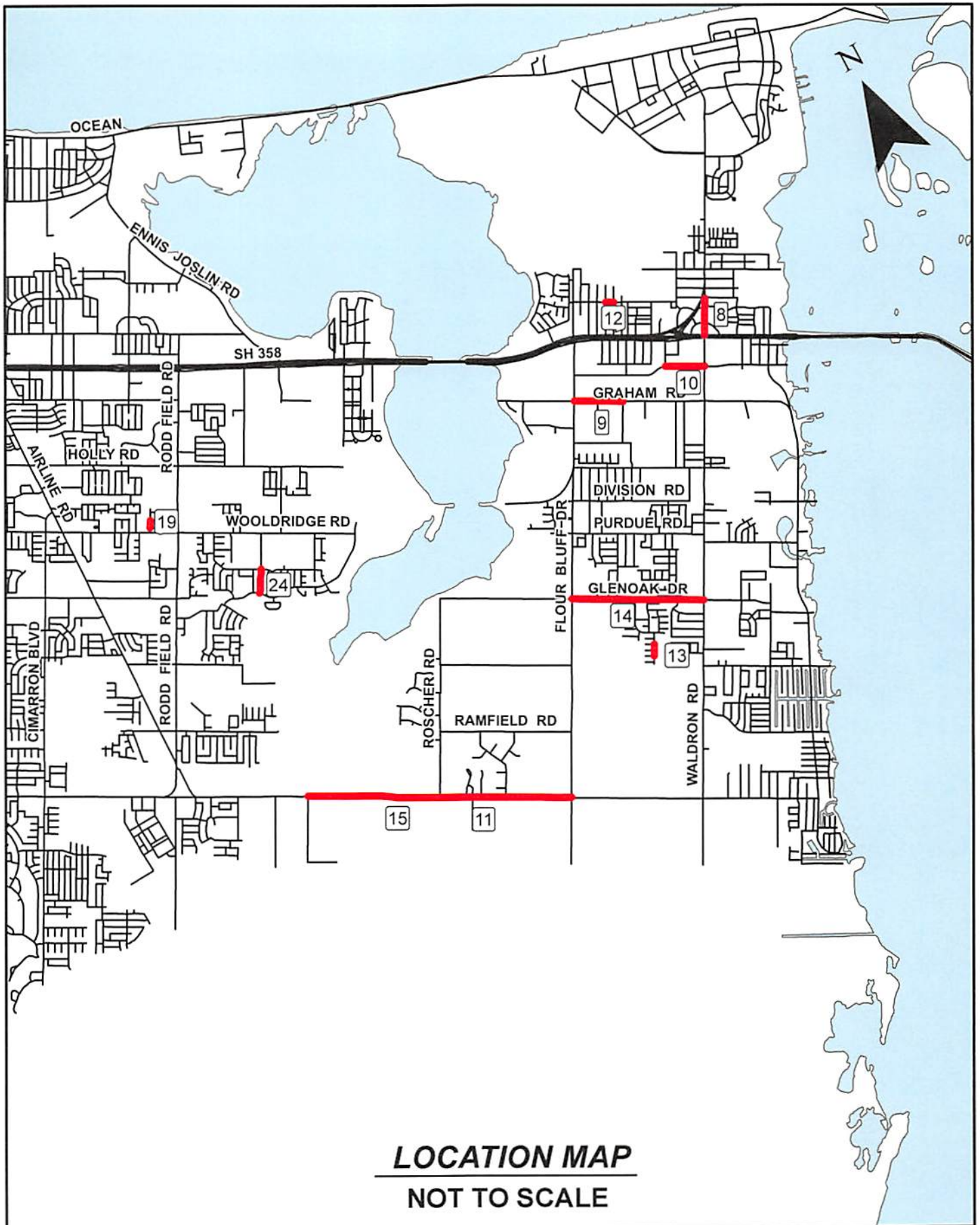




**Citywide Signage Upgrade -  
Street Preventative  
Maintenance**

CITY OF CORPUS CHRISTI, TEXAS  
DEPARTMENT OF CAPITAL PROGRAMS  
PAGE 2 OF 5





**LOCATION MAP**

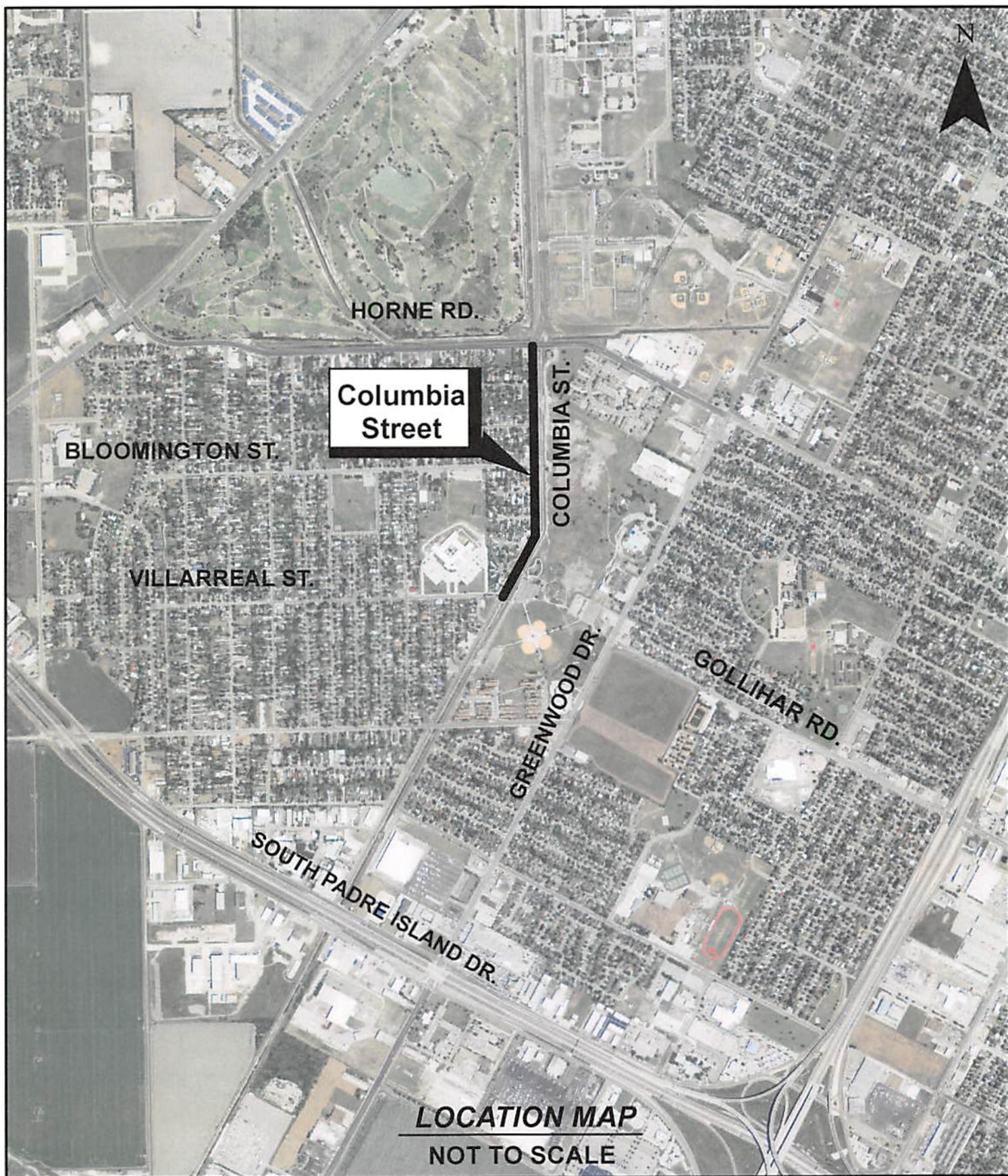
**NOT TO SCALE**

***Citywide Signage Upgrade -  
Street Preventative  
Maintenance***

CITY OF CORPUS CHRISTI, TEXAS  
DEPARTMENT OF CAPITAL PROGRAMS

PAGE 3 OF 5





***Citywide Street Overlay  
Columbia Street Overlay between  
Horne Road and Villarreal Street***





***Citywide Street Overlay  
Lipan Street Overlay between  
Palm Drive and N. 19th Street***