



# **Spur 3 Corridor (Ennis Joslin Road) From SH 358 (SPID) to Ocean Drive**



**Council Presentation  
January 26, 2016**



# Project Location





# Project Scope



This project includes the Master Service Agreement with MBITS for design and engineering services for Traffic Signal Improvements. The first Task Order includes two projects:

1. Ennis Joslin Corridor Improvements that is proposed as a joint TxDOT/City and TAMUCC project with respective Interlocal Agreements for following cost shares:

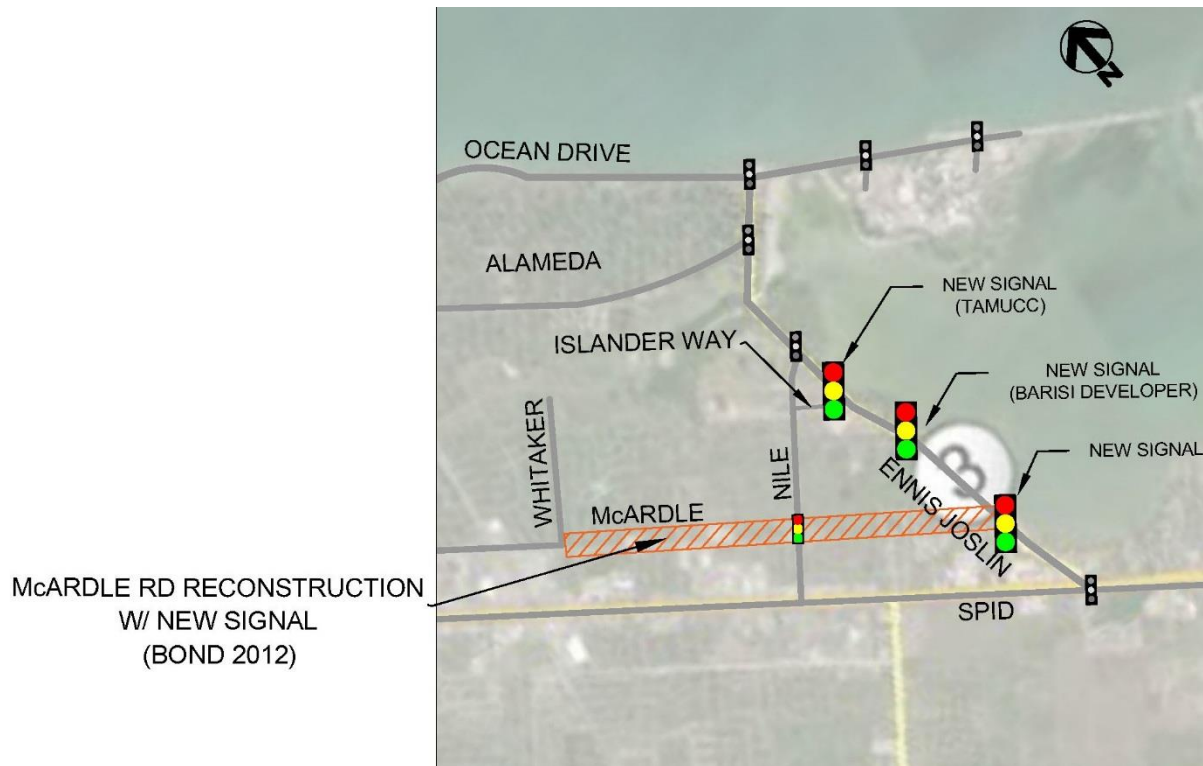
Ennis Joslin Improvements			** City Match	
Total Estimated Construction Cost	TxDOT Participation (80%)	City Participation ** (20%)	TAMUCC Participation	Street Traffic Signal (Bond 2012)
\$1,030,000	\$824,000	\$206,000	\$100,000	\$106,000

- ✓ Two new traffic signals (Islander Way & McArdle)
- ✓ New dedicated Right Hand Turn Lane from Ennis Joslin to Islander Way
- ✓ Full interconnectivity of all signals (new and existing) to support better sequencing and potential evacuation with emergency events
- ✓ *A third signal may be included for the Barisi Development pending future Developer Agreement (establishing a Public Improvement District) and Funding*

2. Ocean Drive Signal Improvements provide for improved three traffic signal upgrades under the Bond 2014 Street Traffic Signal Project:
  - ✓ Doddridge Street Signal Upgrade Design with Ped Poles
  - ✓ Island Boulevard Signal Upgrade Design with Ped Poles
  - ✓ Sand Dollar Boulevard Signal Upgrade Design with Ped Poles

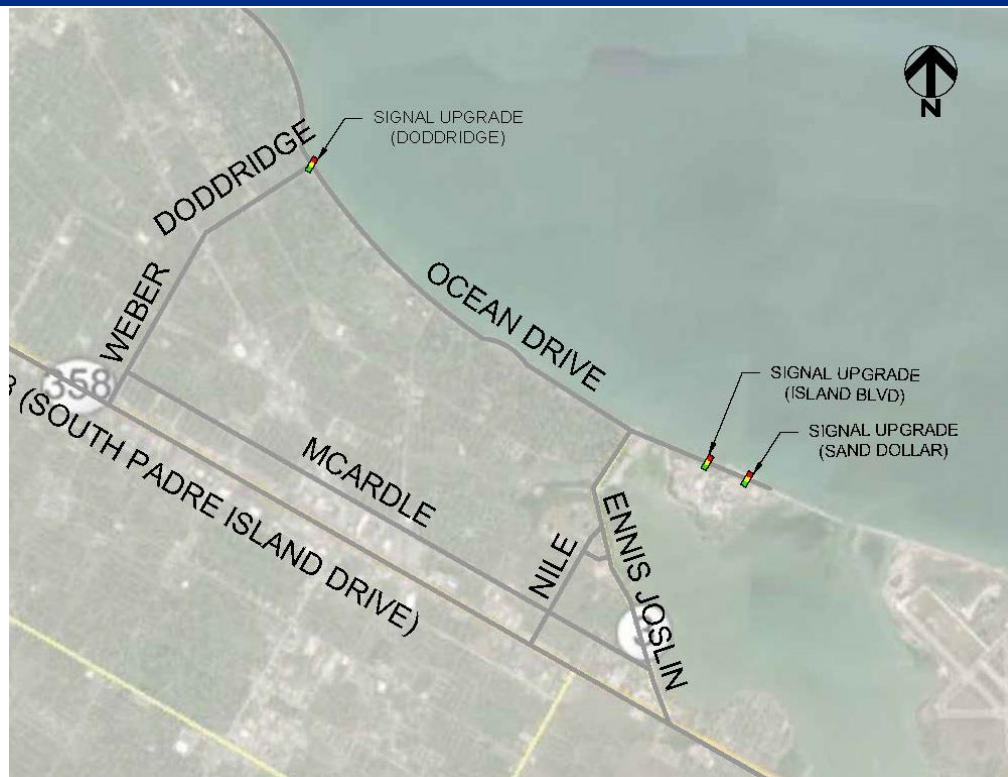


# Ennis Joslin Corridor Improvements





# Ocean Drive Signal Improvements





# Project Schedule



2016											
Jan	Feb	Mar	Apr	May	June	July	Aug	Sep	Oct	Nov	Dec
Design			Bid			Construction					



---

Questions?

---



# Ennis Joslin Corridor Improvements



Ennis Joslin Corridor improvements are based on recommendations from a Traffic Impact Analysis (TIA) Study approved by TxDOT and City. The TIA included the following improvements:

- Ennis Joslin Corridor existing and future traffic demands
- McArdle Road widening (Bond 2012)
- TAMUCC expansion at Islander Way, and
- Proposed Barisi Development (Pharaoh Valley Golf Course)