

# Water Supply Projects Update

Nicholas J. Winkelmann, P.E.

Interim Chief Operating Officer, Corpus Christi Water

Chris Noe, P.E.

Vice President Project Delivery Pape-Dawson

December 9, 2025



# Water Supply Projects Update

- Evangeline Groundwater Project
- Nueces Groundwater Project
- Well Field Monitoring Program
- Reclaimed Water
- Inner Harbor Seawater Desalination
- Water Supply Project Website



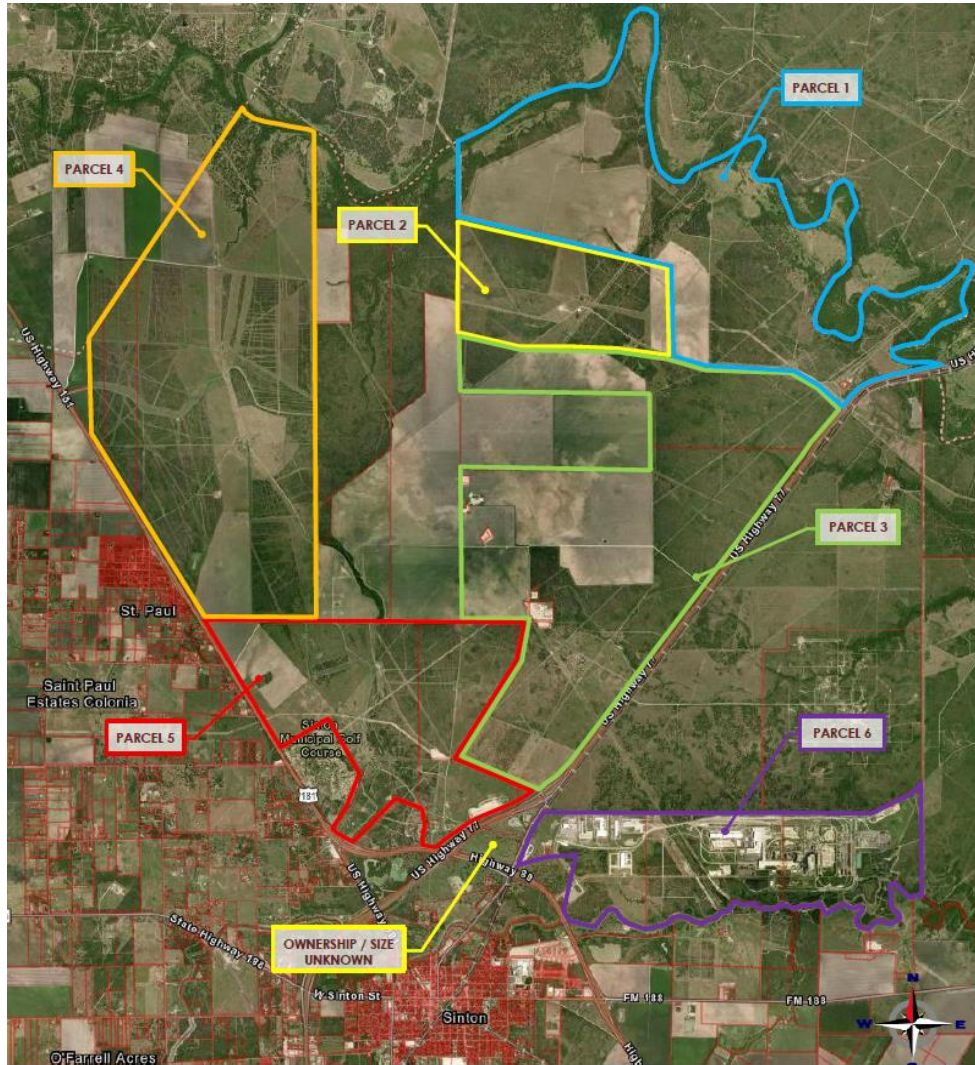
# Evangeline Groundwater Project



## Project Overview:

- Purchase of groundwater rights with existing production permits for 24 MGD
- Proximity to the Mary Rhodes Pipeline (MRP) is critical for timely and cost-efficient delivery
- Project to consist of:
  - Development of 22 additional wells (24 total)
  - Well field water lines
  - Connection to the MRP
  - Electrical infrastructure
  - Electrical controls
  - Ground storage tank
  - Pump station
  - Access roads

# Evangeline Groundwater Project



## Agreement Update:

- Survey to be final and complete December 10
- Seller working towards completion of the Transport Permit Application with City review
- Seller scheduling pre-application meeting with the San Patricio County Groundwater Control District
- Independent hydrogeologic review of groundwater availability has been completed by KT Groundwater, which confirms previous work completed by Intera Inc.
- Sellers are working to finalize the details of the partnership agreement, including surface use agreements, with a mediation with the owners of parcels 5 and 6 is to be scheduled
- The agreement is not signed by the seller or the City, but significant work by both parties continues in earnest



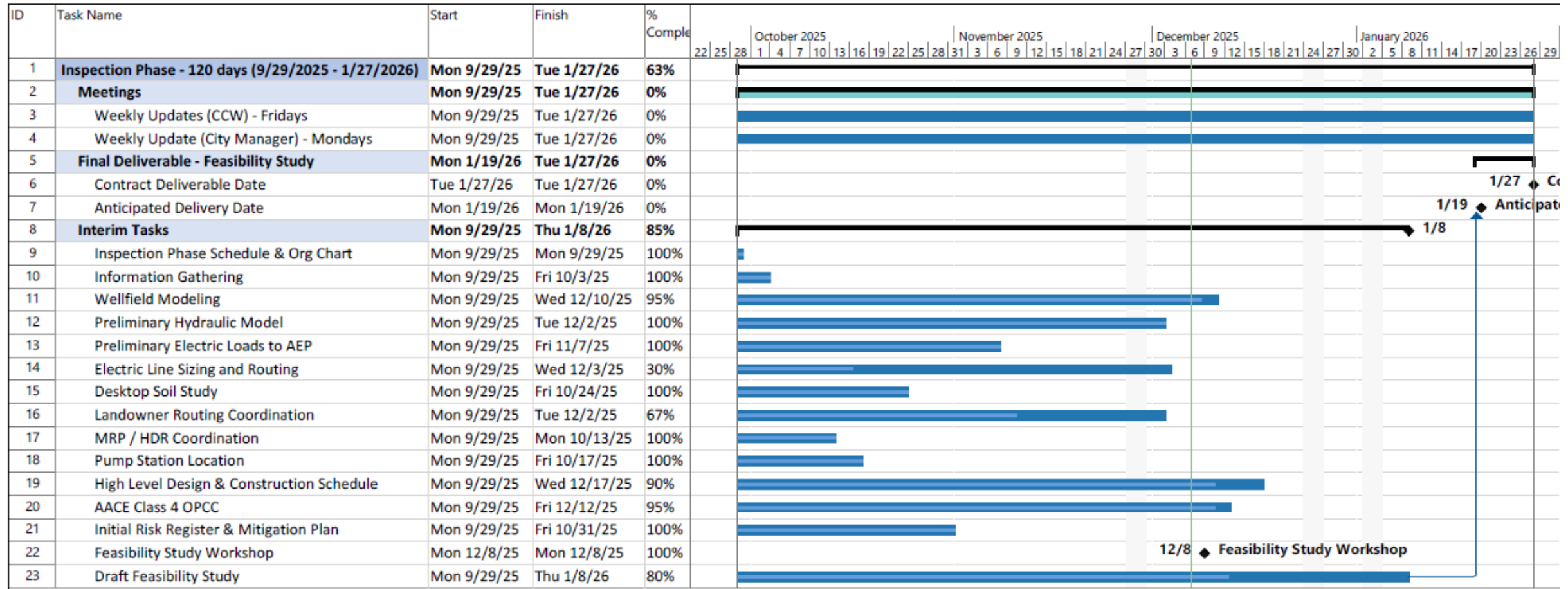
# Evangeline Groundwater Project

The Design Team, led by Pape-Dawson in collaboration with Hanson, HDR, and Intera Inc., continues to progress with design efforts and due diligence.

- Preliminary hydraulic model is complete
- Preliminary electric loads have been determined
- Electric infrastructure sizing and routing is in process with AEP assistance
- Landowner routing coordination is in process
- MRP connection point has been identified, and pipeline hydraulic modeling continues
- Pump station location has been identified with preliminary design in process
- Wellfield modeling and final design will be completed on December 10
- The Engineer's Opinion of Probable Construction Cost will be completed by December 12

CURRENT INSPECTION PHASE STATUS			
<u><i>Deliverable</i></u>	<u><i>Internal Due Date</i></u>	<u><i>Contractual Due Date</i></u>	<u><i>Status</i></u>
Final Feasibility Report	1/19/2026	1/27/2026	Ahead
<u><i>Interim Tasks</i></u>	<u><i>Internal Due Date</i></u>	<u><i>% Complete</i></u>	<u><i>Status</i></u>
Wellfield Modeling	12/10/2025	95%	On Track
Preliminary Hydraulic Model	12/2/2025	100%	Complete
Preliminary Electric Loads to AEP	11/7/2025	100%	Complete
Electric Line Sizing and Routing	12/3/2025	80%	Delayed
Desktop Soil Study	10/24/2025	100%	Complete
Landowner Routing Coordination	12/2/2025	67%	Delayed
MRP / HDR Coordination	10/13/2025	100%	Complete
Pump Station Location	10/17/2025	100%	Complete
High Level Schedule	12/17/2025	90%	On Track
OPCC - Level 4	12/12/2025	95%	On Track
Initial Risk Mitigation Plan	10/31/2025	100%	On Track
Feasibility Workshop	12/8/2025	100%	Complete
Draft Feasibility Report	1/8/2026	70%	On Track

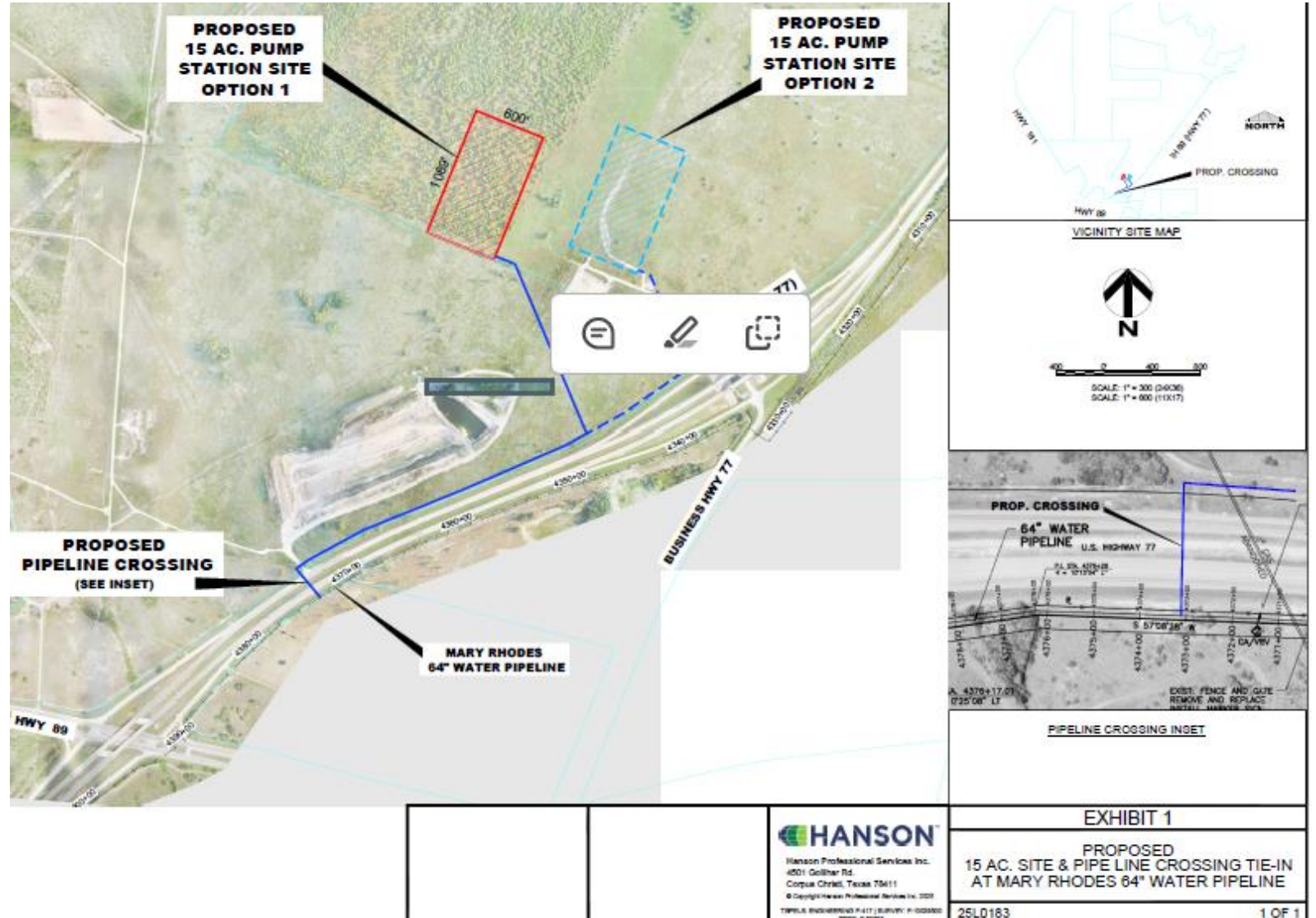
# Evangeline Groundwater Project



# Evangeline Groundwater Project

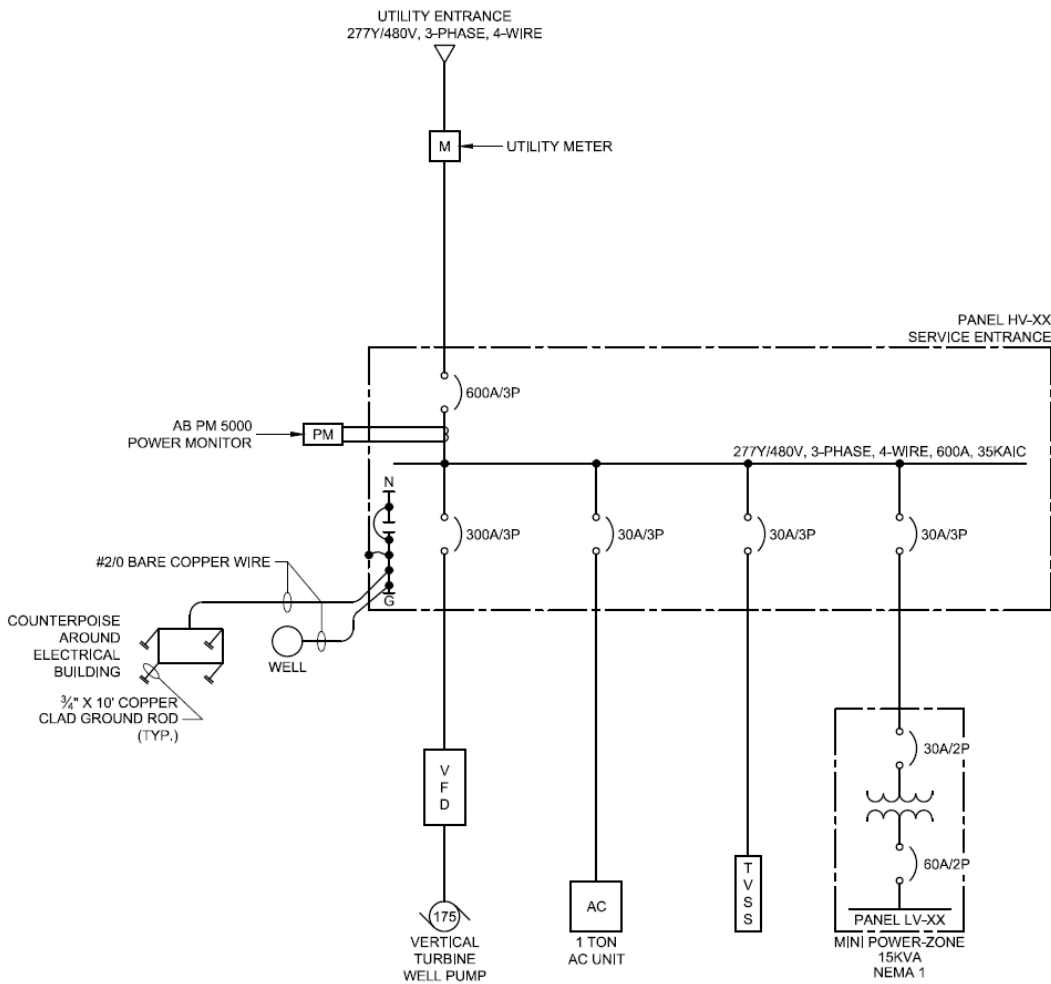
## Proposed:

- MRP connection point
- Pump station location



# Evangeline Groundwater Project

## Electrical design and load analysis



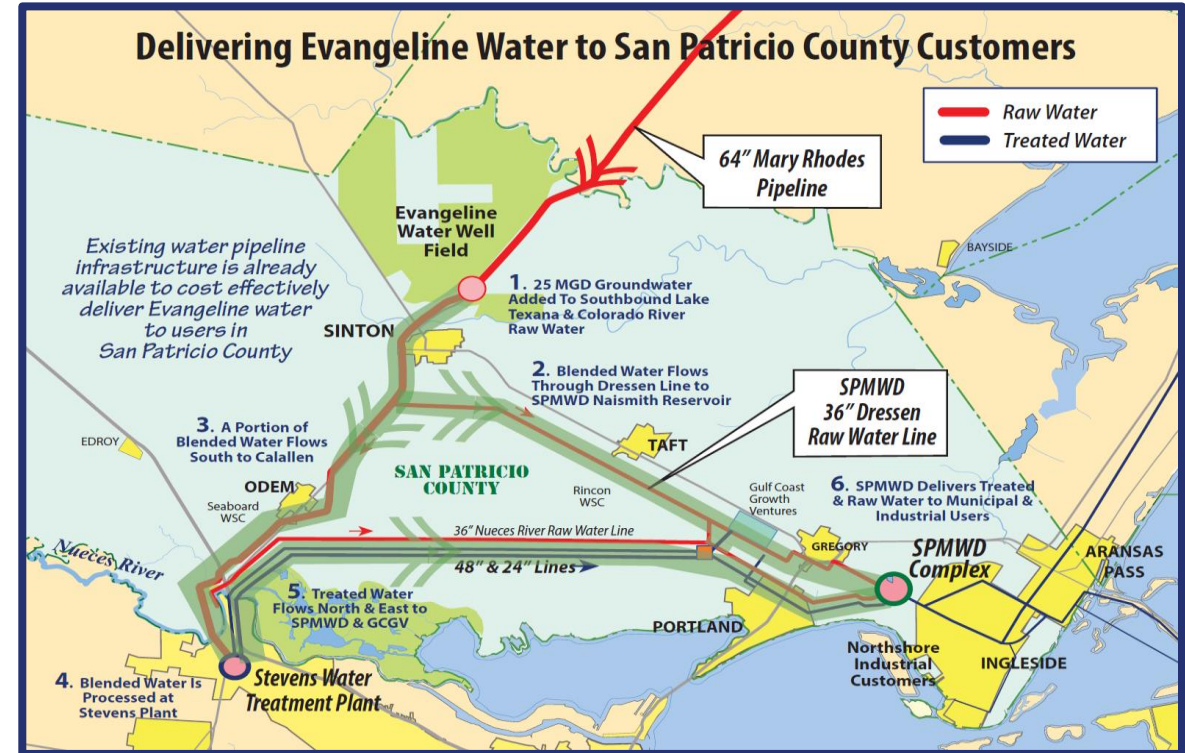
ELECTRICAL LOAD ANALYSIS				
LOAD NAME		CONNECTED AMPS		
		ΦA	ΦB	ΦC
WELL PUMP	175 HP	210.0	210.0	210.0
AC UNIT	15 KW	18.0	18.0	18.0
MINI POWER-ZONE	15 KVA	31.3	—	31.3
TOTAL CONNECTED LOAD		259.3	228.0	259.3
25% OF LARGEST MOTOR		52.5	52.5	52.5
25% OF CONTINUOUS LOADS		4.5	4.5	4.5
MINIMUM SERVICE AMPACITY @ 480 VOLT, 3Φ, 4-WIRE		316.3	285.0	316.3
FAULT CURRENT		< 35 K.A.I.C.		



# Evangeline Groundwater Project

## Upcoming Actions:

- Weekly meeting with Evangeline Laguna LP are ongoing
- Multiple weekly design meetings with the Pape-Dawson design team continue
- Weekly progress meeting with Pape-Dawson
- Stakeholder meeting with landowners
- Professional Services Contract Amendment for Pape-Dawson to be presented for City Council consideration December 16
- Contract for pre-construction services with Garney will be presented to City Council for consideration on December 16
- Pre-application meeting with San Patricio County Groundwater District
- Working towards Interlocal Agreements with City of Sinton & Saint Paul Water Supply Corporation



# Nueces Groundwater Program

## Eastern Well Field

- Well field is substantially complete and operated per the conditions of the Bed and Banks Permit
- Current expenditures: \$16,622,579

## Western Well Field:

- Bed and Banks Permit – Staff and consultants have been working to complete the application and schedule review meetings with Texas Commission on Environmental Quality
- Well Nos. 9, 10, 11, 12, 13 have been drilled with one pump installed and other permanent pumping assemblies designed
- Currently Drilling Well Nos. 14, 16
- Interior Well Field Piping is in progress by CCW Crews
- Full Well Field operation is expected in May 2026
- Current expenditures: \$13,298,994

**\$30M grant funding secured from the State of Texas**





# Well Field Monitoring Program

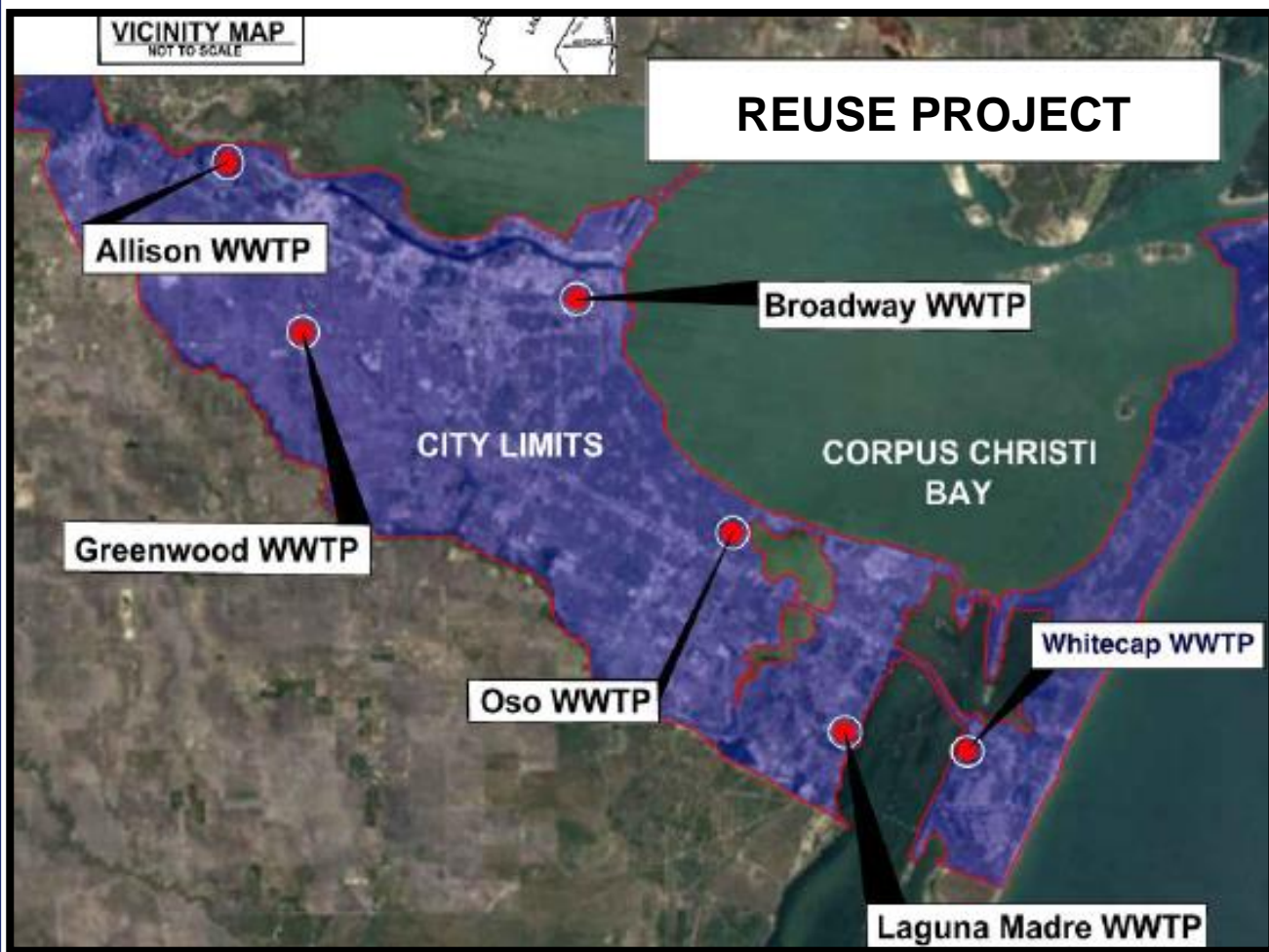
## CCW Partnership with Area Well Owners to:

- Assist Well Owners with periodic water level monitoring
- Assist Well Owners with water quality data sampling
- Review well construction information with Well Owners
- All data to be provided to the Well Owners
- Data to be utilized to track and monitor operating conditions and water levels
- Impacts confirmed by the data resulting from CCW well field operation would then be remedied
- CCW is currently working with multiple Well Owners

**For information, contact CCW at 361-826-1600**



# Reclaimed Water Infrastructure



- CCW has been in discussions with multiple entities regarding the use of effluent water from wastewater treatment plants, with agreements scheduled to be presented at City Council meetings in January
  - Allison WWTP – 3 MGD
  - Greenwood WWTP – 3 MGD
- Ardurra is preparing a proposal for effluent conveyance from the Oso Wastewater Treatment Plant, and pipeline alignment is in design
  - Oso WWTP – 10 MGD



# Inner Harbor Seawater Desalination Project

- Memorandum of Understanding Signed Executed by Corpus Christi Desal Partners and City on December 4
- City met with Texas Water Development Board on December 8
- Texas Water Development Board on December 16 with item to consider the funding deferment request
- Cost certain options are expected to be reviewed at the February 17 Council meeting
- Weekly meetings occurring to:
  - Review of all existing work product
  - Process Improvement Considerations
  - Pretreatment Options
  - Potential for Value Engineering



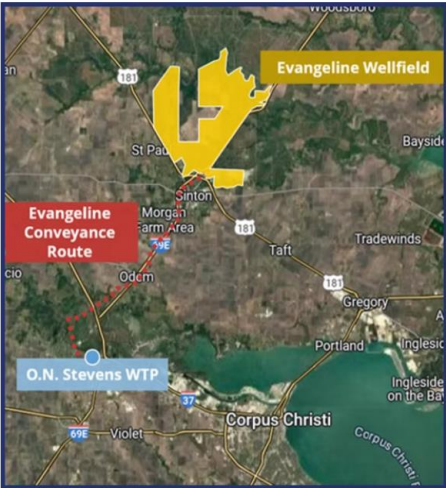
# Water Supply Project Website

securingwater.corpuschristitx.gov

## Evangeline Groundwater Project

The City established a groundwaters rights agreement with Evangeline/Laguna, LP, working in partnership with City of Sinton and the St Paul Water Supply Corporation. This project represents a significant step forward in transforming the region's water security.

This agreement provides access to substantial groundwater rights, helping secure a reliable water supply for Corpus Christi. The Evangeline Project involves securing necessary transportation and drilling permits before construction can begin. Engineering firms are working on the design and implementation of this water infrastructure project to ensure it meets all regulatory requirements.



## Project Updates

Evangeline Groundwater Project	Nueces Groundwater Wells
--------------------------------	--------------------------

