

Amendment to Voestalpine Texas' Chapter 380 Agreement

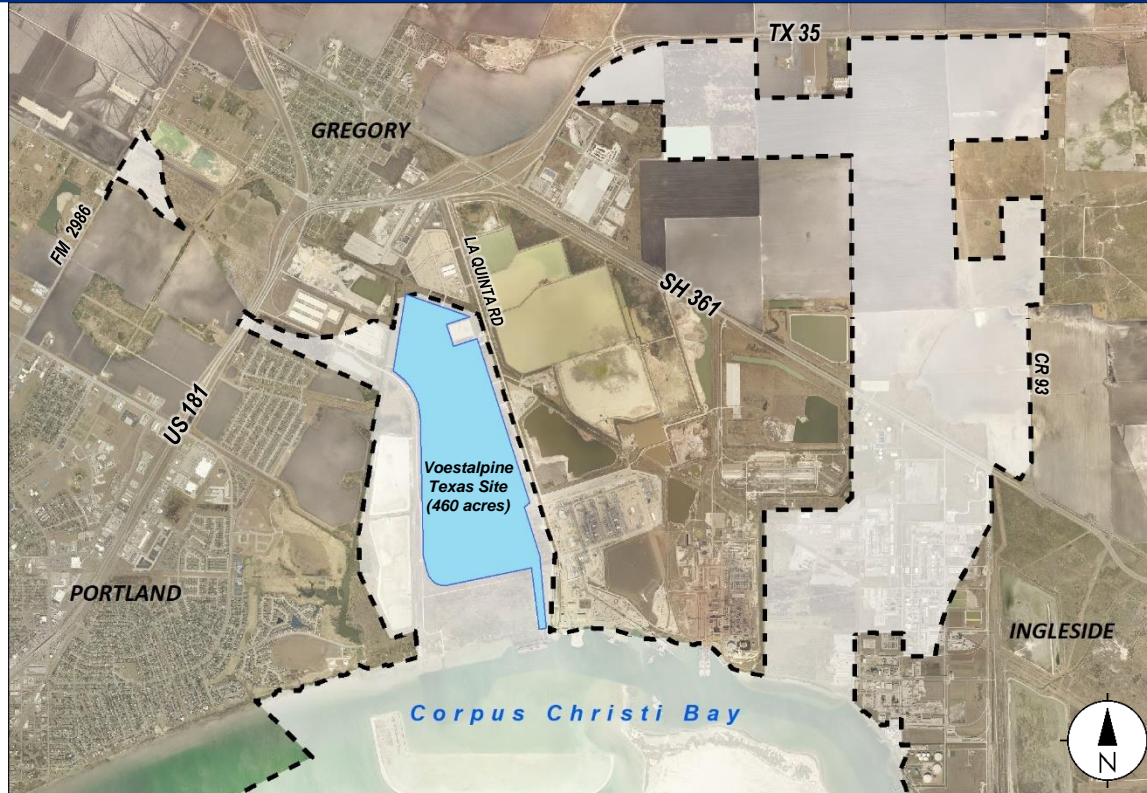


Council Presentation
November 12, 2019



Current City Limits

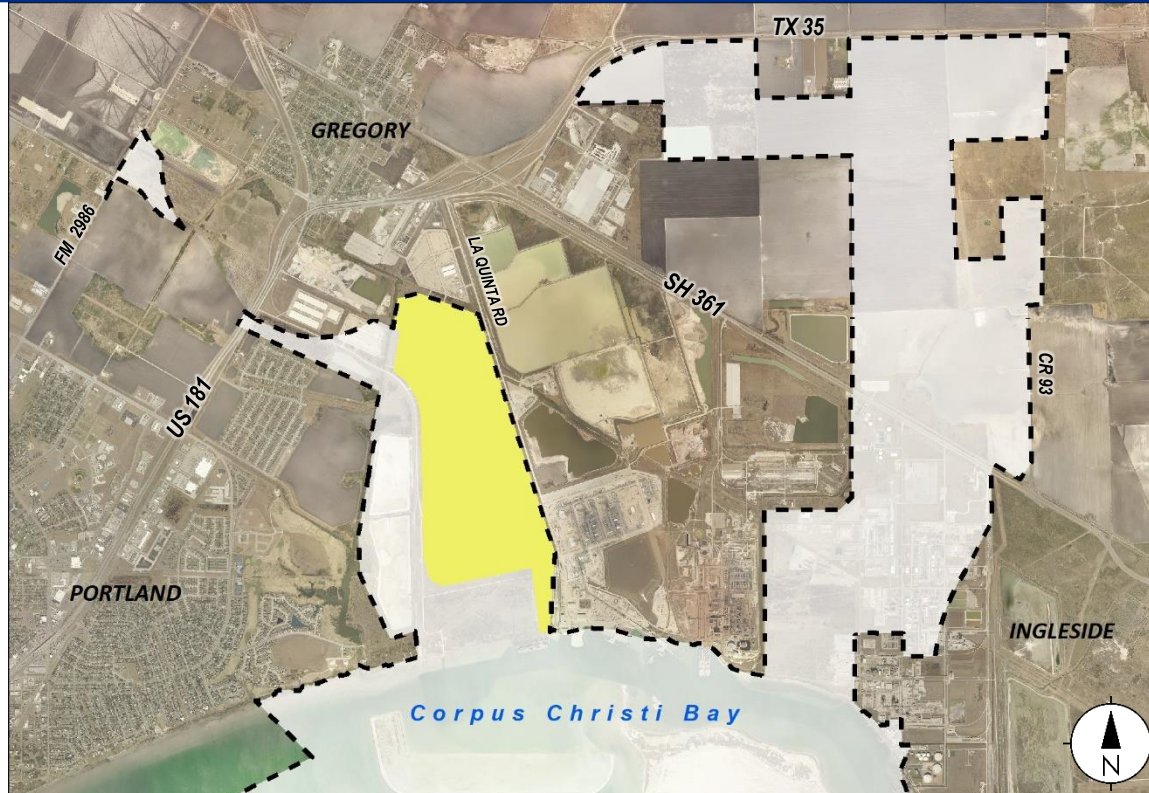
Approximately 3,451.31 Acres (5.40 sq. mi.)





Disannexation Area

Approximately 540.79 Acres (0.85 sq. mi.)





New City Limits After Disannexation

Approximately 2,910.52 Acres (4.55 sq. mi)

