



# Zoning Case #0815-02 CAH-DHL Properties. LLC

**From:** "FR" Farm Rural District  
**To:** "CG-2" General Commercial

Planning Commission  
Presentation  
August 26, 2015



# Aerial Overview



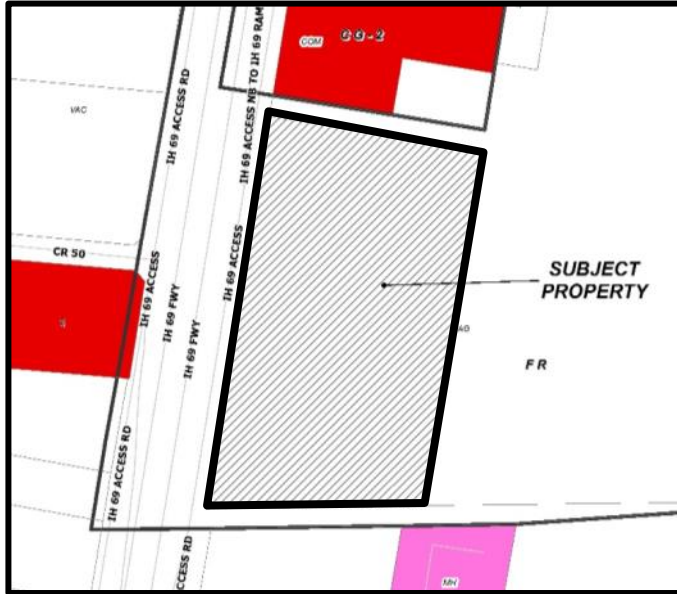


# Aerial






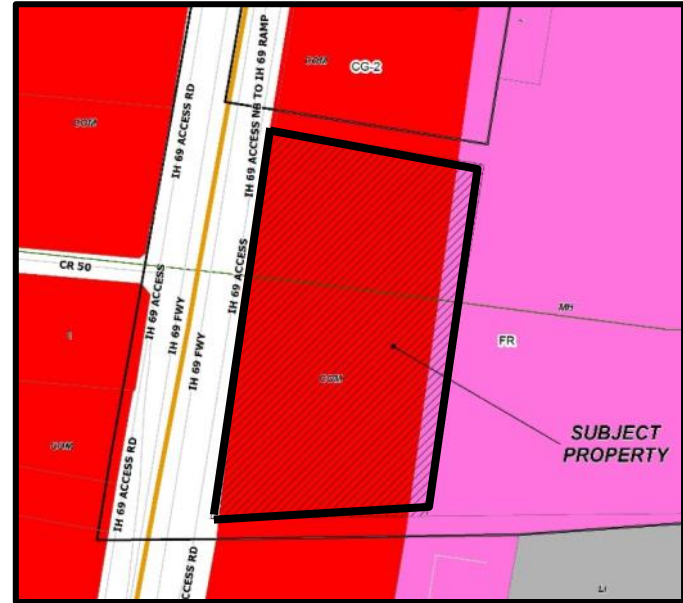
## Existing Land Use




 Vacant

 Mobile Home

## Future Land Use

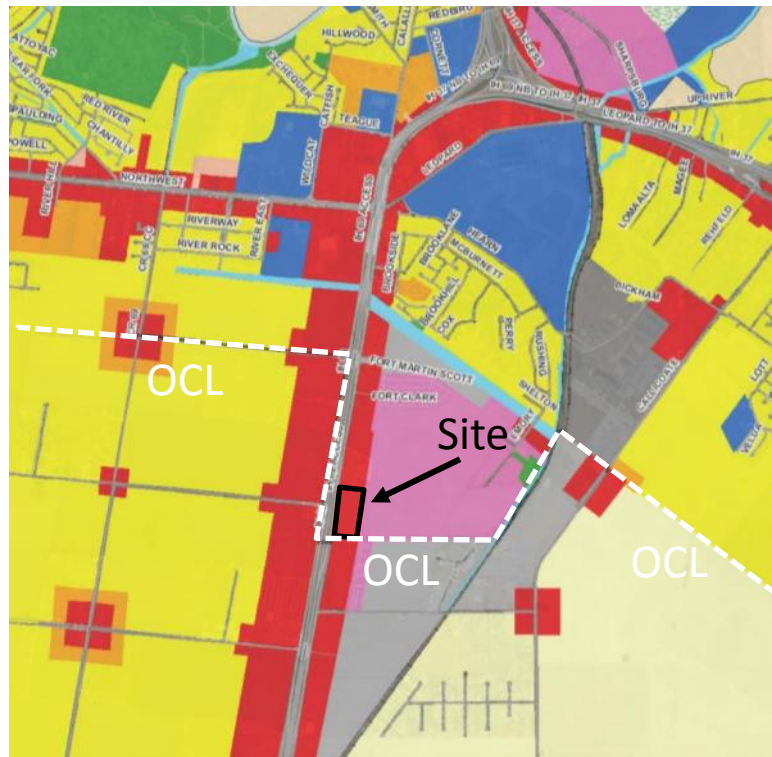


 Commercial

 Light Industrial



# Future Land Use Map

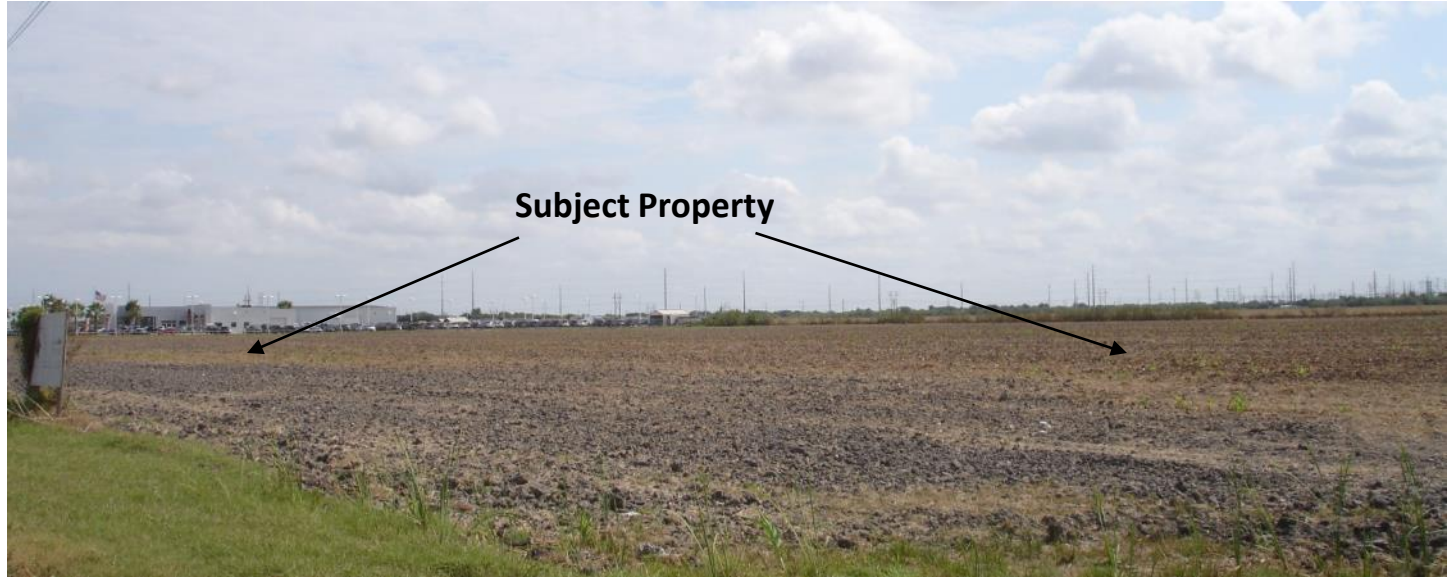






# Facing Northeast From IH 69 Access

---





# Facing Southeast From IH 69 Access





# North on IH 69 Access Road Along Property Frontage







# South on IH 69 Access Road Along Property Frontage





# Northwest Across IH 69 Access Road

---





# Public Notification

4 Notices mailed inside 200' buffer  
1 Notice mailed outside 200' buffer

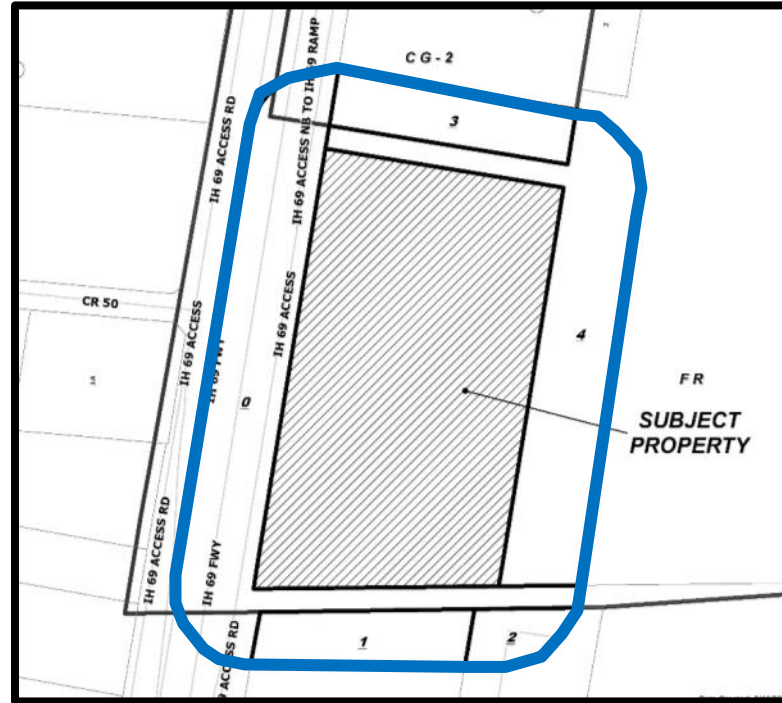
Notification Area



Opposed: 0 (0.00%)



In Favor: 0





# Staff Recommendation

---

## **Approval of the “CG-2” General Commercial District**





# Conceptual Site Plan for Informational Purposes

