



Zoning Case #0414-02 Peterson Properties, Ltd.

From: "RS-6" Single-Family 6 District
To: "CG-2" General Commercial District



Planning Commission
Presentation
April 9, 2014

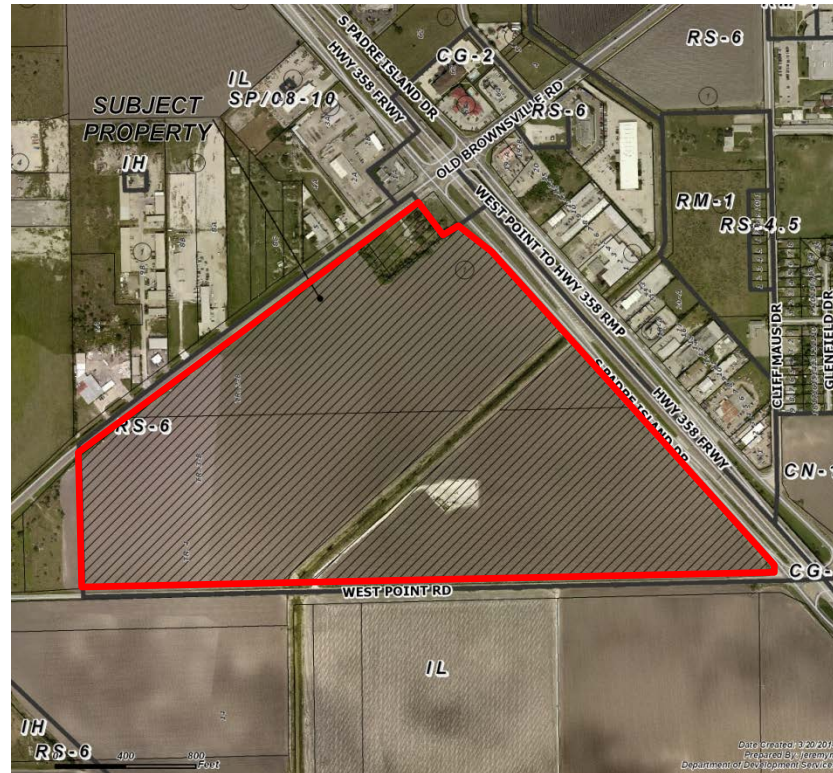


Aerial Overview



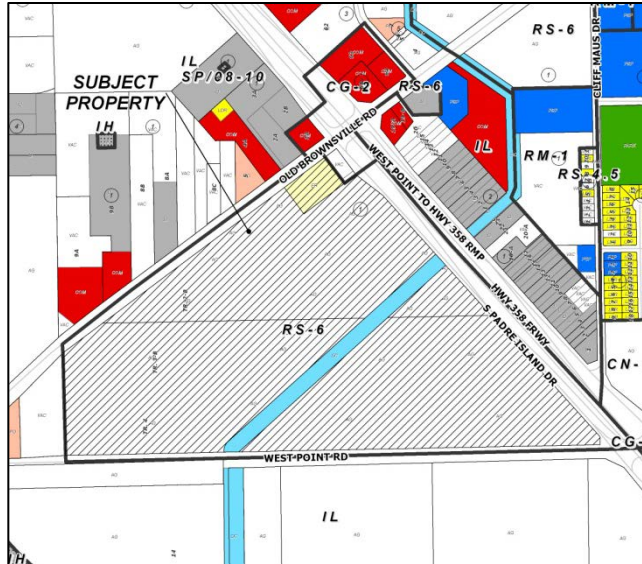


Aerial

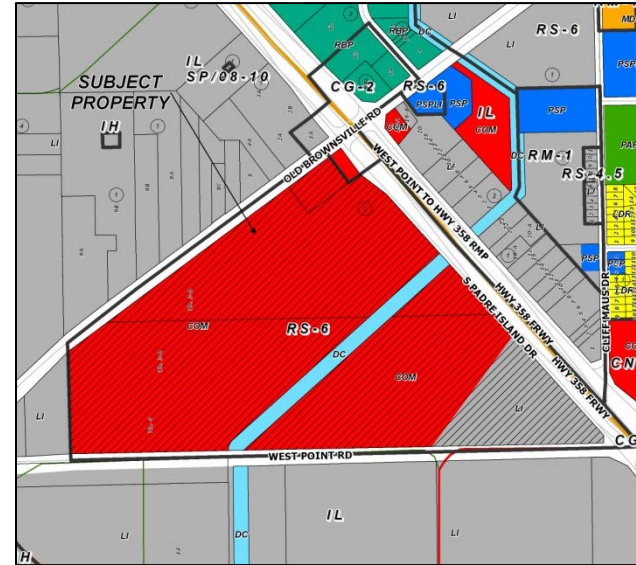




Existing Land Use



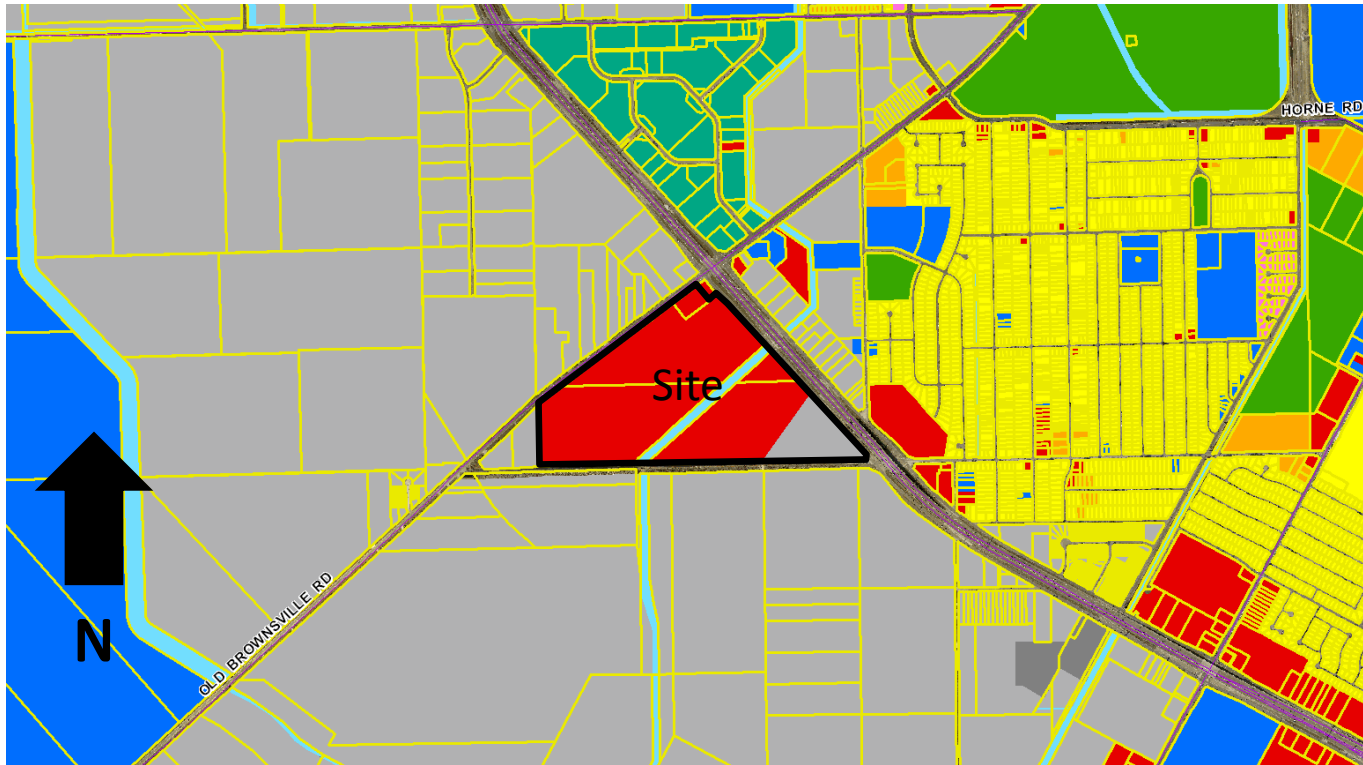
Future Land Use



- | | | | | | | | |
|--|--------------------|--|--------------------|---|----------------------------|---|------------------------|
|  | Commercial |  | Light Industrial |  | Medium Density Residential |  | Research/Business Park |
|  | Vacant |  | Public/Semi-Public |  | Low Density Residential | | |
|  | Estate Residential |  | Office | | | | |



Future Land Use Map





Pictures



Intersection of Old Brownsville Rd. and SPID



West along SPID





Pictures



East along Old Brownsville Rd.



West along West Point Rd.





Pictures



Subject Property





Public Notification



33 Notices mailed inside 200' buffer
4 Notice mailed outside 200' buffer

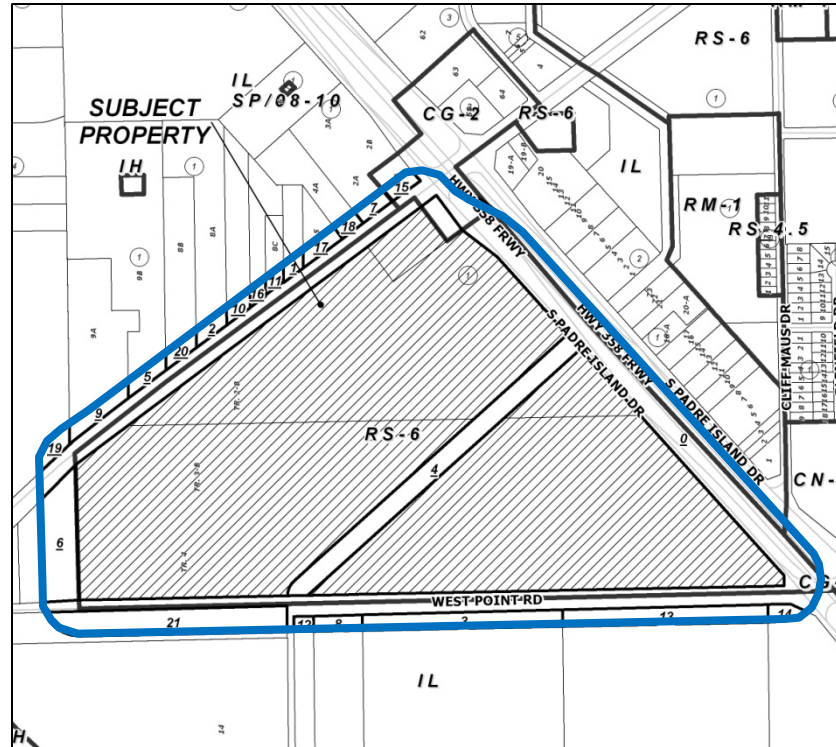
Notification Area



Opposed:



In Favor:





Staff Recommendation



Approval of the “CG-2” General Commercial District