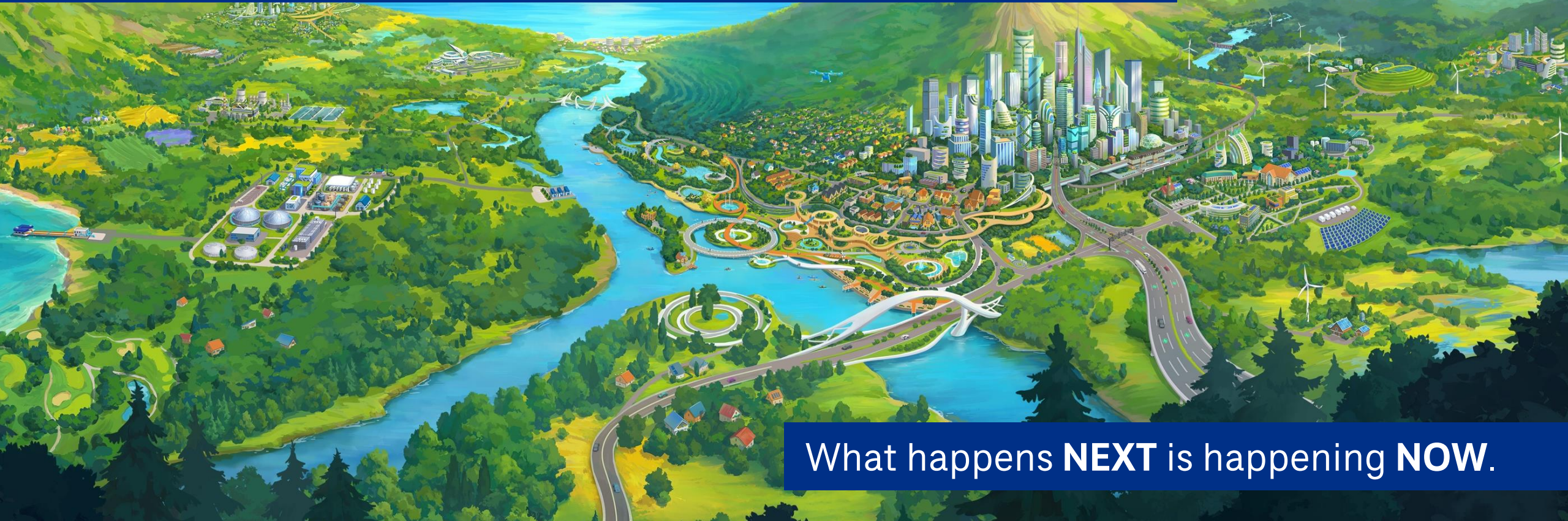


Corpus Christi Polymers



What happens **NEXT** is happening **NOW**.

Stacy Barna

Ruben Munoz

March 6, 2025





CDM Smith

- **Who We Are**

- National Civil and Environmental Engineering and Construction Firm
- Houston- Northeast Water Purification Plant Expansion
- Local Office in Corpus Christi

- **Assignment:** Conceptual Study of CC Polymer Plant

- Working with CCW Upper Management
- Review CC Polymer Plant, Alternatives for water supply to CCW

Background- CC Polmer Plant

- The CC Polymers Seawater Desalination Plant is an industrial desalination water treatment plant (WTP) with an approximate capacity of 9.4 million gallons per day (MGD)
- Started construction in 2016
- WTP is currently 95% construction complete
- It would take approximately 9-12 months to complete construction, start up and commissioning from contract start

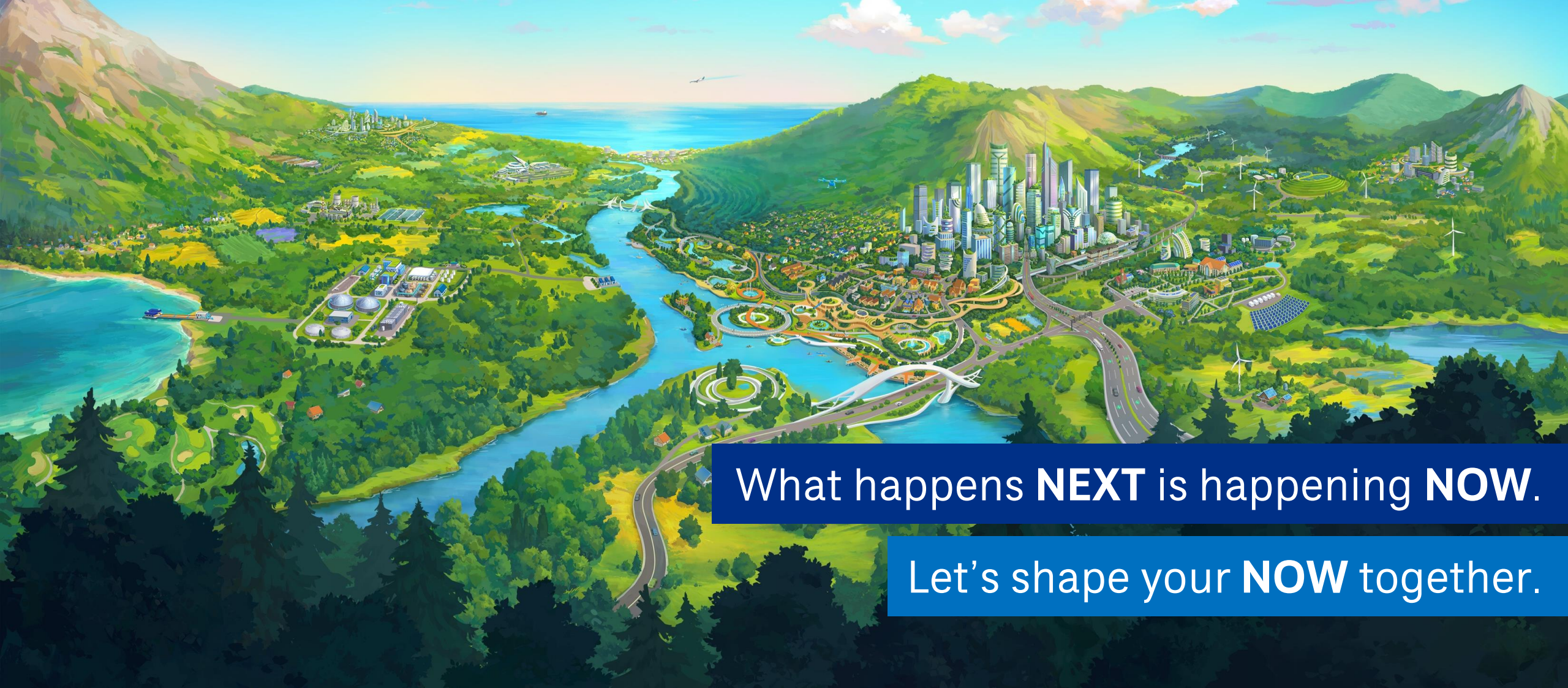
Potential Water Solution





Opportunities

- Plant can be expanded in the future
- Short term or long-term additional water source
- Fast Solution- Serve as a 9.4MGD raw water source with one pass reverse osmosis treatment for non-potable purposes
- Longer term- Add treatment to make potable
- Offset 9.4 MGD from O.N. Stevens to use elsewhere in the potable system



What happens **NEXT** is happening **NOW**.

Let's shape your **NOW** together.

Questions?

**CDM
Smith**