

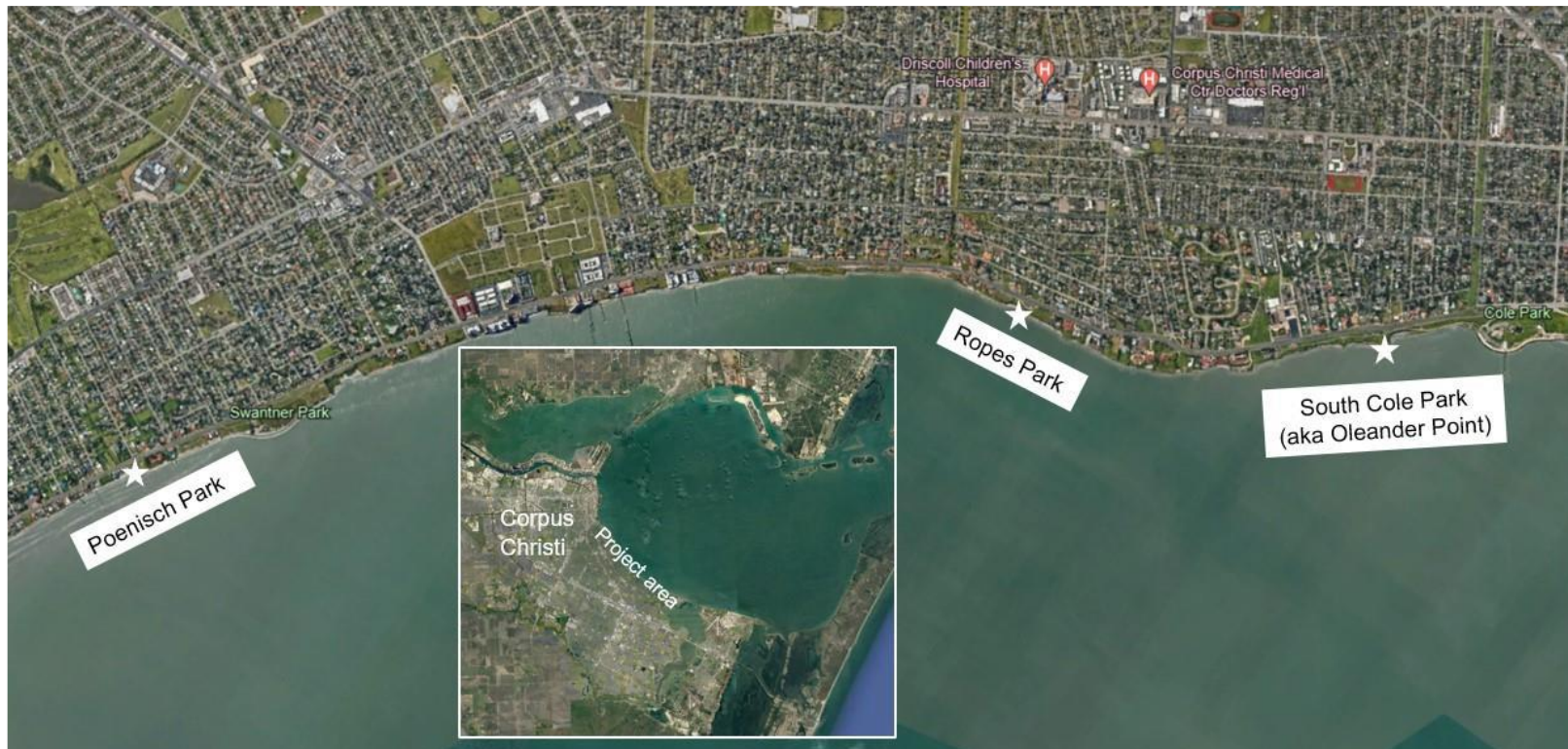


# **Cooperation Agreement with TGLO to Mitigate Shoreline Erosion of Parks along the Corpus Christi Bay**

Corpus Christi B Corporation Meeting  
October 21, 2024



# Areas of Focus





---

# Park Visits

October 2023 through September 2024

Cole Park	595,000 visits	276,000 visitors
Ropes Park	41,600 visits	27,900 visitors
Poenisch Park	19,100 visits	10,400 visitors



# Background

---



- The prevailing erosion of each park has been exacerbated by high water/waves during the 2020 Hurricane Season.
- Historical erosion has reduced the footprint of each park & reduced park safety.
- These parks are high-profile areas with heavy tourist visitation & provide bayfront viewing & bay access.
- The parks also function as neighborhood parks that are easily accessible by active modes of transportation (e.g., walking, bikes, scooters).
- These parks are much closer to adjacent neighborhoods than Gulf beaches, making them a lower cost option for water activities.



# Project Goals

---



- Reduce bluff erosion to preserve existing park footprint
- Stabilize/enhance pocket beaches to provide safe public access
- Apply hybrid living, shoreline stabilization techniques to maximize environmental benefits – Enhance/mimic natural coastal features (e.g., headlands) to reduce impact of waves/surge
- Protect park acreage & infrastructure threatened by continued erosion
- Increase habitat for organisms & algae.



# PHASE 1

---



- **TASK 1 - DATA COLLECTION**
    - Will be to characterize existing site conditions to support development of shoreline protection concepts & associated alternatives analysis.
  - **TASK 2 - PRELIMINARY ALTERNATIVES ANALYSIS**
    - Will characterize existing conditions, develop potential project concepts & compare/contrast concepts in terms of cost, resiliency, regulatory constraints & aesthetics.
-



# PHASE 1 TASKS

---



- Surveying
- Geotechnical Investigation
- Topographic/Bathymetric Surveying
- Property Boundary Surveying
- Subsurface Utility Investigation
- Environmental/Habitat Delineations
- Site Characterizations
- Develop Shoreline Protection Concepts
- Compare Shoreline Protection Concepts
- Cost Estimates
- Graphic Renderings
- Alternatives Analysis Report
- Coastal Boundary Surveys
- USACE Permitting



# Cooperation Agreement

---



- Tasks 1 & 2 are scheduled to be completed within 270 days from the issuance of the notice to proceed to HDR.
  - The term of this agreement will end on August 31, 2029.
  - Maximum term length was assigned to allow for unknowns like delays in contract execution or following the dissipation of other storm events that may develop.
  - The work order between TGLO & HDR, Inc. cannot be executed until this Agreement is approved
  - Reimbursement is typically conducted on a monthly basis.
-





# BUDGET



<b>PROJECT COSTS</b>		
<b>CONTRACTUAL</b>	<b>AMOUNT</b>	
Phase 1 (Tasks 1 & 2)	\$2,095,000.00	
<b>TOTAL PROJECT COST NOT TO EXCEED</b>	<b>\$2,095,000.00</b>	
<b>COST SHARING SUMMARY</b>		
	<b>AMOUNT</b>	<b>PERCENT</b>
GLO Funds to Partner (City)	\$0.00	0%
GLO Funds (CEPRA) to HDR, Inc.	\$1,275,000.00	60%
City Match Funds	\$820,000.00	40%
<b>TOTAL PROJECT CONTRIBUTIONS</b>	<b>\$2,095,000.00</b>	<b>100%</b>



# Recommendation

---



- Staff recommend approval to accept the project cooperation agreement for improvements to mitigate shoreline erosion of public parks along the Corpus Christi Bay.