



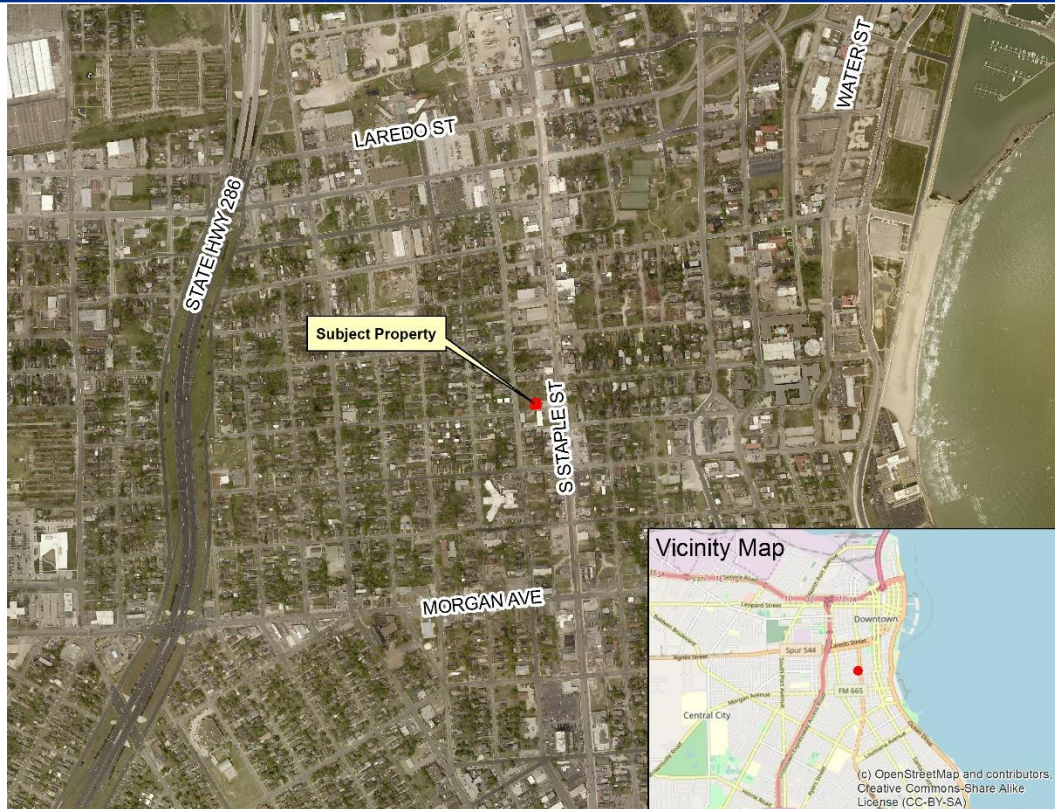
Zoning Case #0619-02
Texas Roofing Company, LLC

Rezoning for a Property at
916 South Alameda Street

City Council Presentation
August 20, 2019



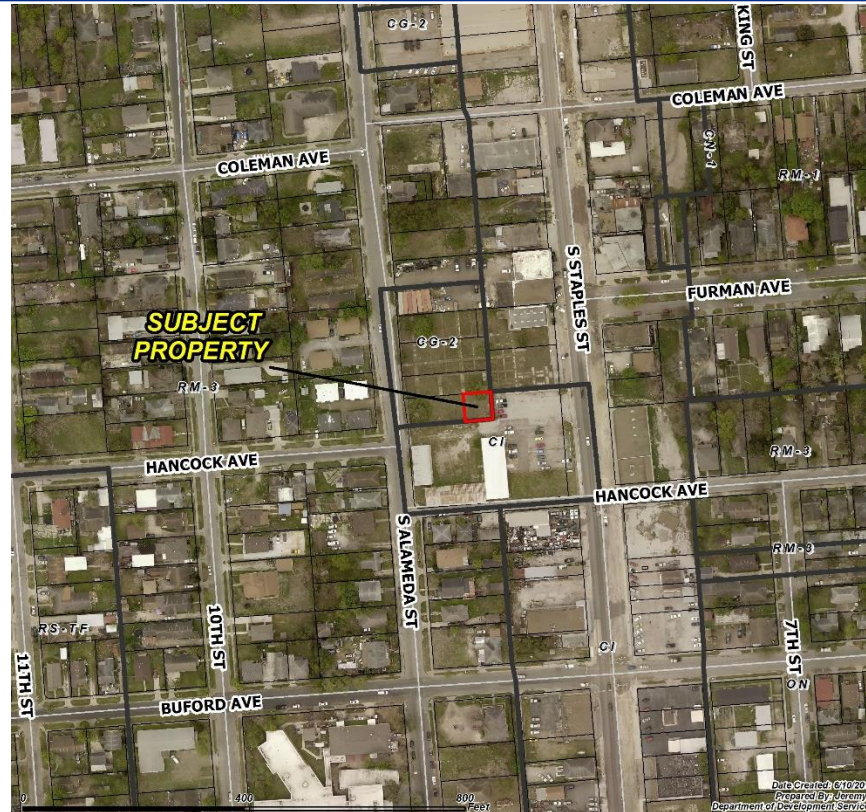
Aerial Overview



(c) OpenStreetMap and contributors,
Creative Commons-Share Alike
License (CC-BY-SA)



Subject Property at 916 S. Alameda Street





Zoning Pattern





Planning Commission and Staff Recommendation

Approval of the change of zoning from the “CG-2” General Commercial District to the “CG-2/SP” General Commercial District with a Special Permit.

Condition

Provide an engineering drawing prepared, signed and sealed by a Texas licensed professional engineer, that the proposed cell tower will be able to withstand a sustained wind speed of 130 mph.