

# Annexation of a Portion of County Road 22

---

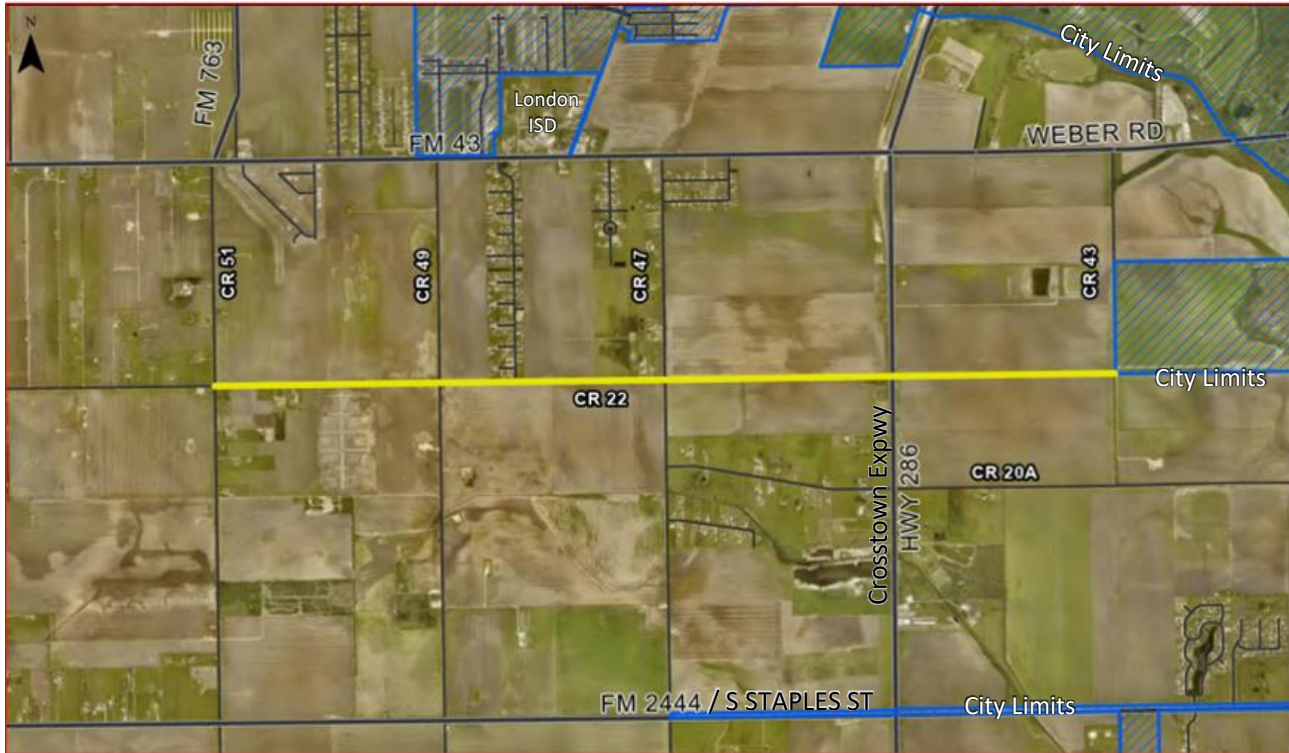
Public Hearings



City Council Presentation  
November 14, 2023

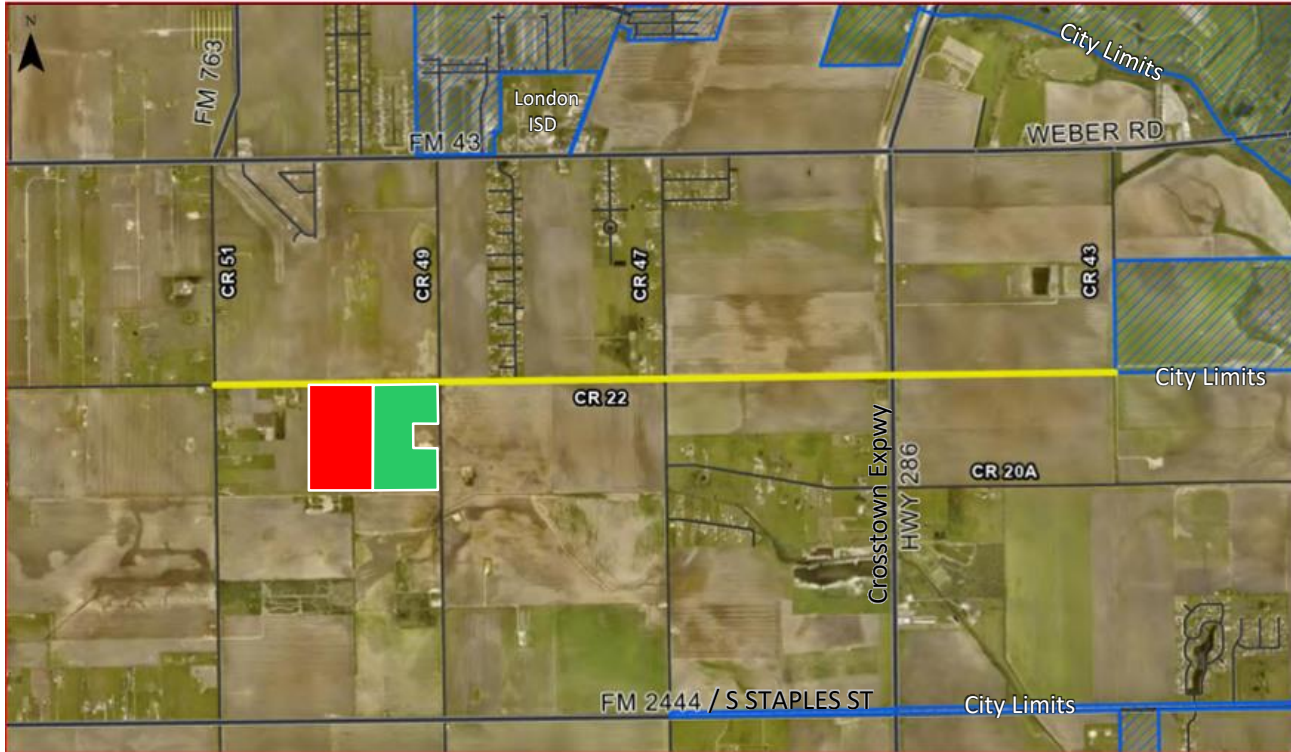


# Subject Property: A 4-mile portion of CR 22 ROW





# CR 22 and Adjacent Parcels





# Background

---

- CR 22 between CR 51 and CR 43
    - 19.41 acres; 4 miles; owned by Nueces County
  - Annexing this portion of CR 22 will extend the City limit line to the location of two new subdivisions, Charlotte Estates and London Ranch Estates.
  - Once “contiguous” to the City limit line, the City can annex the two subdivisions.
-



# Background

---

- Texas Local Government Code section 43.1055 provides a process for a city to annex road ROW upon the request of who owns/maintains the ROW.
  - The Nueces County Commissioners Court passed a resolution on August 17, 2023, requesting that the City annex this portion of CR 22.
  - No decision about whether to annex any property is being made today.
-



# Proposed Annexation Schedule

---

- 10/31 - City Council Resolution directing staff to create a Service Plan for potential annexation of a portion of CR 22 ROW
  - 11/3 - Notice for CR 22 ROW annexation public hearings
  - 11/14 - Hold two Public Hearings for the annexation of CR 22 ROW
  - 12/12 - Public Hearing, Ordinance for CR 22 ROW and two adjacent properties
-