

# CAPITAL IMPROVEMENT REPORT



**Corpus Christi**  
International Airport

# Terminal Fire Pump



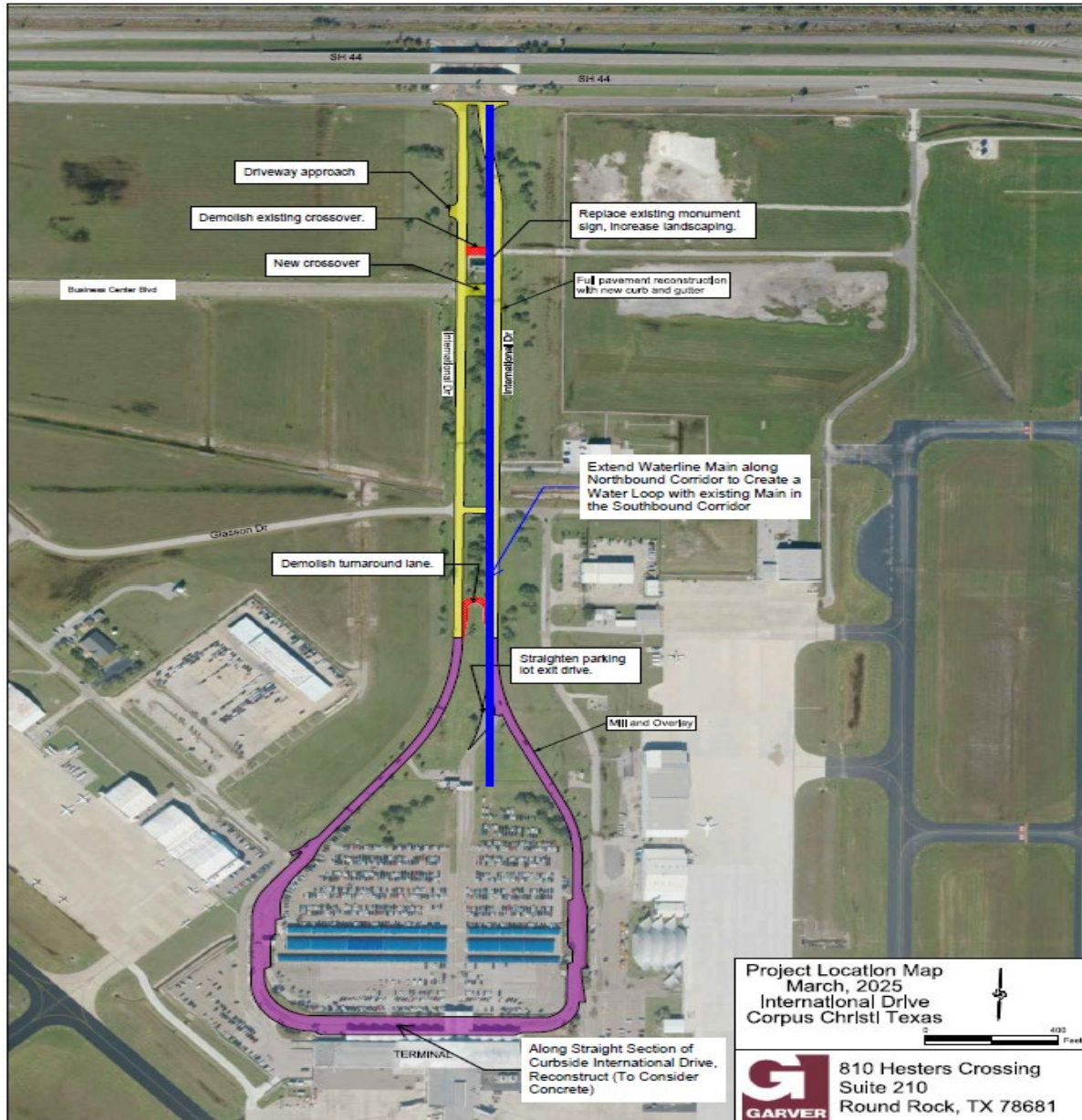
New fire pump base for the  
Terminal fire suppression  
system

**\$115,000**

Completes the Terminal  
Rehabilitation grant projects



# International Drive – Design



## SCOPE:

- Rehab International Drive
  - Full depth reconstruction
  - Mill and overlay
  - Concrete frontage
  - Remove crossover and turnaround
  - Add crossover

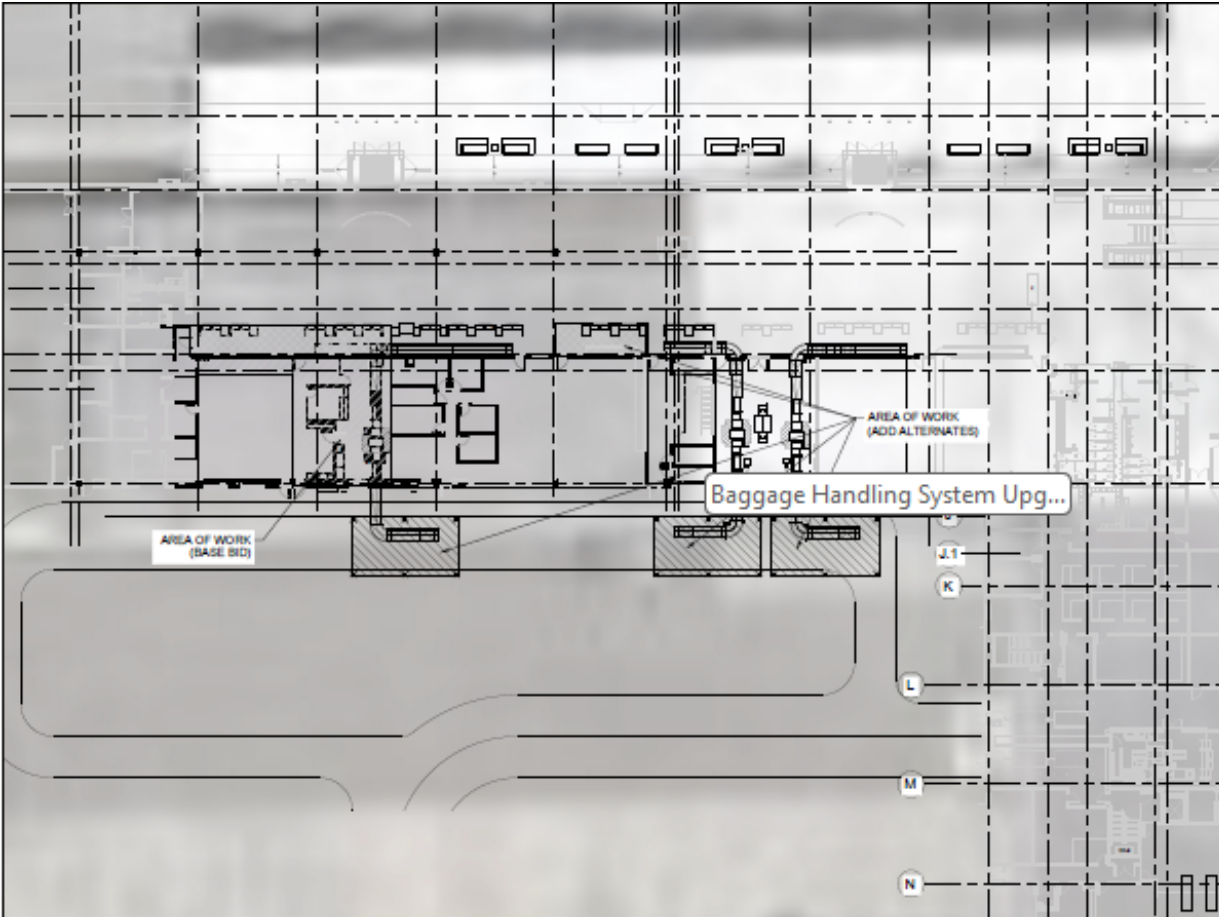
Garver Engineers – MSA

\$ 669,981

- CCW to cover design cost for waterline main

Phased landscaping project to follow

# Baggage Handling System Upgrade



## SCOPE:

- Move TSA baggage screener behind SouthWest ticket counter
- Install new bag belts
- Cover canopies
- Concrete improvements

Garver Engineers – MSA

Project Rebid with 2 add alternates

FAA Airport Terminal Improvement Program (ATP) grant application (~\$6M)



# Taxiway E – Design

## EXHIBIT C - PROJECT LIMITS

Pavement Grading  
Modifications to  
Improve Drainage

Pavement Grading  
Modifications to  
Improve Drainage

Pavement  
Rehabilitation (Mill  
and Overlay)

## BACKGROUND

2025 FAA Certification Inspection Discrepancy

- Ponding on 'TXY E' could alter directional control
- Wildlife attractant
- Correction date of 2026

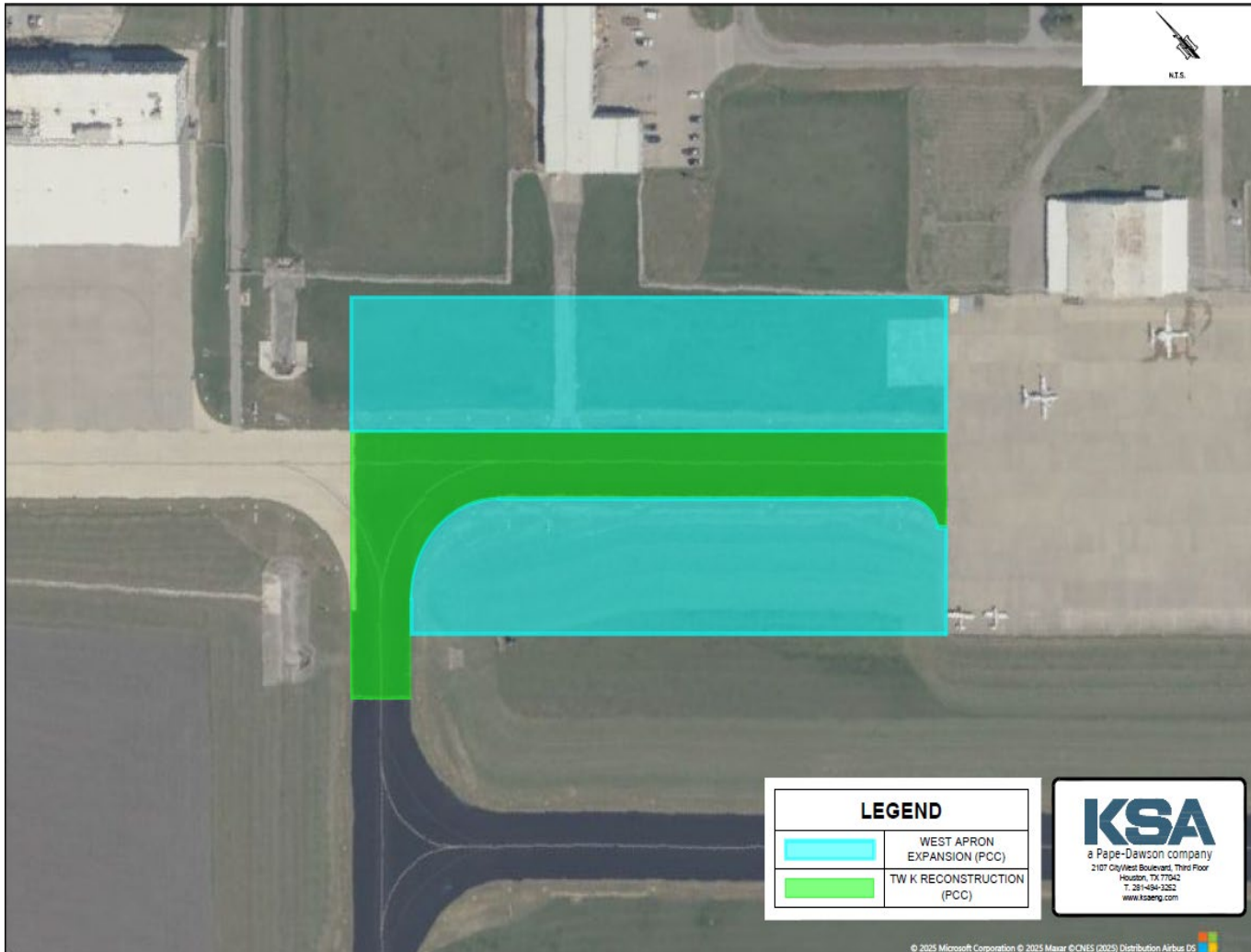
## SCOPE:

- Rehab 'Taxiway E'
  - Mill and overlay
  - Repair water ponding issues

Garver Engineers – MSA

Estimate: \$136,200

# Taxiway K – Design



## SCOPE:

- Rehab 'Taxiway K' and Expand West Apron
  - Expand ramp space for more hangar development
  - Relocation of 'TXY K' expand parking
  - FY-26 AIP & AIG funds for construction (\$6,248,667)

KSA Engineers – MSA

Estimate: \$426,445