



# BROEN Valve Technologies



Council Presentation  
April 8, 2025



## Unique Features of Broen Ball Valves



- Unique serial numbers ensure full traceability
- Available in various sizes, pressure classes, and actuator options.
- Uses PTFE for high temperatures; includes graphite ring for fire safe protection.
- Special metal and graphite sealing ensure tightness even during fire (EN ISO 10497)
- Allow pressure bleeding between ball and body for tightness checks without system shutdown.
- Metal connection prevents electrostatic charge accumulation
- Broen holds patents for their innovative valve designs.



BROEN Ballomax® Floating Ball Valves



BROEN Ballomax® Polyethylene (PE) Ball Valves



BROEN Ballomax® Trunnion



Ballomax - Reduced bore  
Broen - Ball valve welded

# Critical Roles of BROEN Ball Valves in Natural Gas Distribution

BROEN ball valves are essential for several critical operations in natural gas distribution:

- 1. Repairs and Replacements:** These valves allow for the safe and efficient isolation of sections of the pipeline, enabling maintenance crews to perform repairs or replacements without disrupting the entire system. This minimizes downtime and ensures continuous gas supply to unaffected areas.
- 2. Isolating Specific Areas:** By isolating specific sections of the pipeline, BROEN ball valves help in managing and controlling the flow of natural gas. This is crucial for maintaining operational efficiency and preventing potential hazards in case of leaks or other issues.
- 3. Ensuring Emergency Preparedness:** In emergency situations, such as gas leaks or pipeline ruptures, BROEN ball valves can quickly shut off the flow of gas to prevent further damage and ensure the safety of personnel and the surrounding environment. Their reliable sealing and quick operation are vital for emergency response.
- 4. Maintaining Operational Efficiency:** BROEN ball valves are designed to provide high mechanical and functional reliability, ensuring smooth and efficient operation of the natural gas distribution system. Their advanced features, such as self-lubricating seats and metal-seated valves, contribute to long-lasting performance and reduced maintenance requirements.



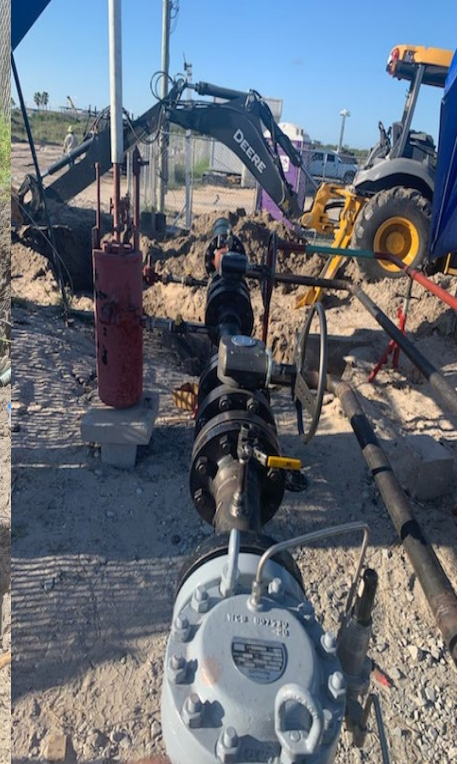
10" Ball Valve Installation- Gollihar Project



16" Ball Valve Installation- Columbia Project



16" Ball Valve Installation- Columbia Project



Island Project- Built Reg Station- 4", 6", 8" Ball Valve Installation





## BROEN Ball Valves



BROEN ball valves are critical for CC Gas distribution systems, ensuring total tightness and safety. Their advanced features, such as FireSafe protection, stem sealing, and Double Block and Bleed (DBB), are crucial for preventing fires and protecting public safety. These valves meet stringent industry requirements, ensuring compliance with safety and performance standards. Their reliable operation and innovative design make them indispensable for maintaining the integrity and safety of natural gas distribution networks.



# Questions

