



# DEVELOPER PARTICIPATION AGREEMENT – MPM DEVELOPMENT, LP

FOR STREET IMPROVEMENTS

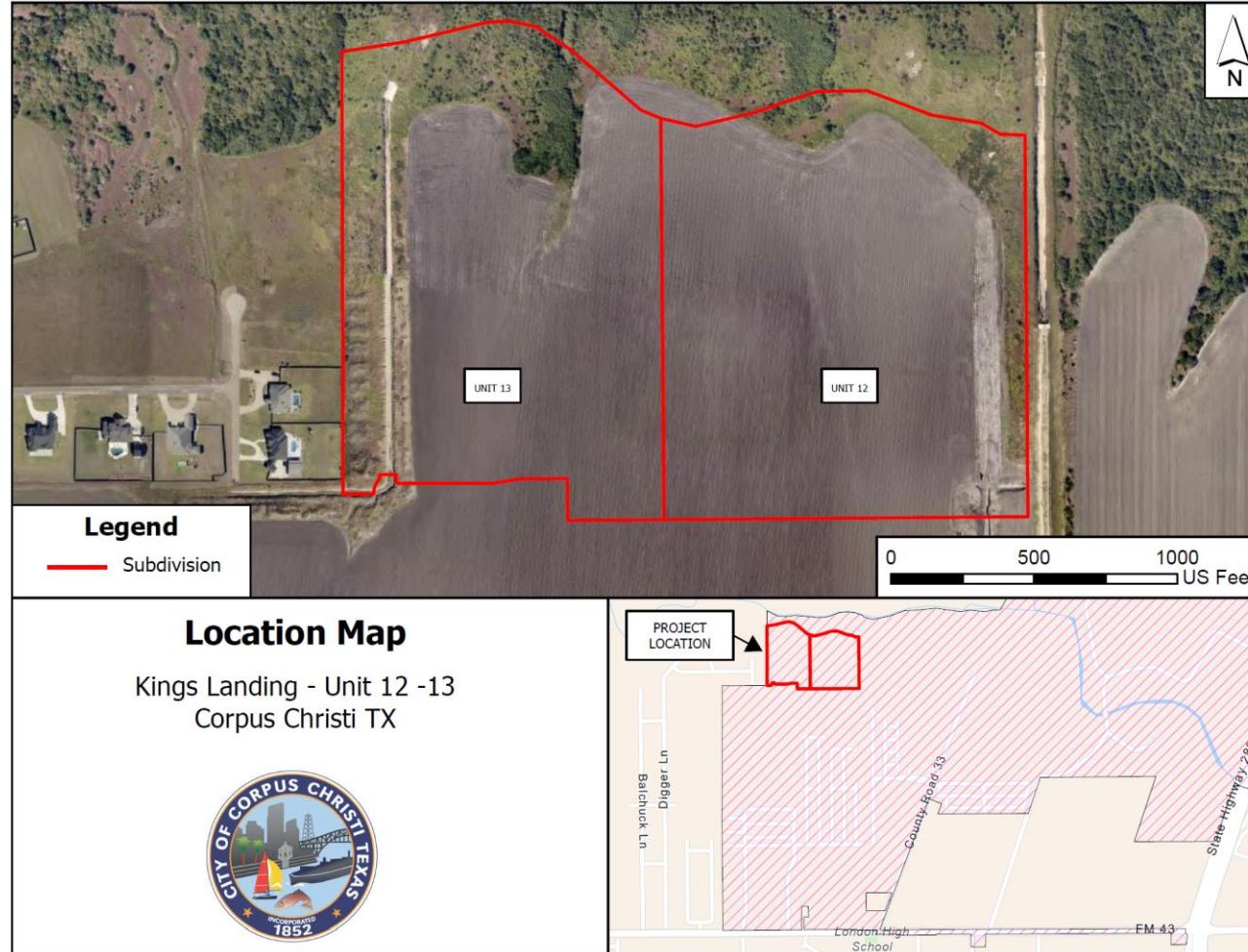
For Street Improvement

## DEVELOPER PARTICIPATION AGREEMENT

Resolution authorizing a Participation Agreement (“Agreement”) with MPM Development, LP (“Developer”) for the City’s share of the cost for the oversizing of the Portland Cement Concrete Pavement/Roller Compacted Concrete Pavement (PCCP/RCCP) street infrastructure improvements from a “L-1A” Local Residential street to a “C-3” Primary Collector street on Castle Black Drive not to exceed \$842,210.40 for the development known as King’s Landing Unit 12, located north of Lady Alexa Drive and west of London Pirate Road (District 3).



# FOR STREET IMPROVEMENT LOCATION MAP



For Street Improvement

# TOTAL COST ESTIMATE

		BASS WELSH ENGINEERING TX Registration No. F-52 Survey Registration No. 100027-00 P.O. Box 6397 Corpus Christi, TX 78466-6397			3054 S. Alameda St
					9/8/2025
King's Landing Unit 12 - Cost Oversize Castle Black Dr. (Residential to C-3 Collector)					
Cost of Oversized Street					
ITEM	DESCRIPTION	QUANTITY	UNIT	COST	TOTAL
1	8" PCCP/ RRCP TO LIP OF GUTTER	6332	SY	\$95.00	\$601,540.00
2	12" LIME STABILIZED SUBGRADE TO 2'BC	6839	SY	\$45.00	\$307,755.00
3	12" PORTLAND CEMENT STABILIZED SUBGRADE TO 2'BC	6839	SY	\$35.00	\$239,365.00
4	EXCAVATION TO 2' BC	6839	SY	\$4.00	\$27,356.00
					\$ 1,176,016.00
Cost of Residential Street					
ITEM	DESCRIPTION	QUANTITY	UNIT	COST	TOTAL
1	7" PCCP/RCCP TO LIP OF GUTTER	3546	SY	\$72.00	\$255,312.00
2	8" LIME STABILIZED SUBGRADE TO 2'BC	4053	SY	\$28.00	\$113,484.00
3	8" PORTLAND CEMENT STABILIZED SUBGRADE TO 2'BC	4053	SY	\$22.00	\$89,166.00
4	EXCAVATION TO 2' BC	4053	SY	\$4.00	\$16,212.00
					\$474,174.00
CITY PORTION EQUALS DIFFERENCE IN CONSTRUCTION COST					\$701,842.00
11% ENGINEERING, SURVERYING, & TESTING					\$77,202.62
7% CONTINGENCY					\$49,128.94
2% BOND					\$14,036.84
TOTAL AMOUNT REIMBURSABLE					\$842,210.40



FOR STREET IMPROVEMENT

## RECOMMENDATION

- Staff recommends approval of the developer participation agreement with MPM Development, LP to reimburse the developer up to \$842,210.40 for the City's share of the cost to construct the street infrastructure improvements.
- The request is in accordance with UDC Section 8.4 City Participation in Streets and Drainage Cross Sections.





Thank you!