

Mary Rhodes Pipeline System Improvements

Bloomington and Woodsboro Booster Pump Stations

Nicholas Winkelmann, P.E.

Director of Water Systems and Support Services

October 22, 2024

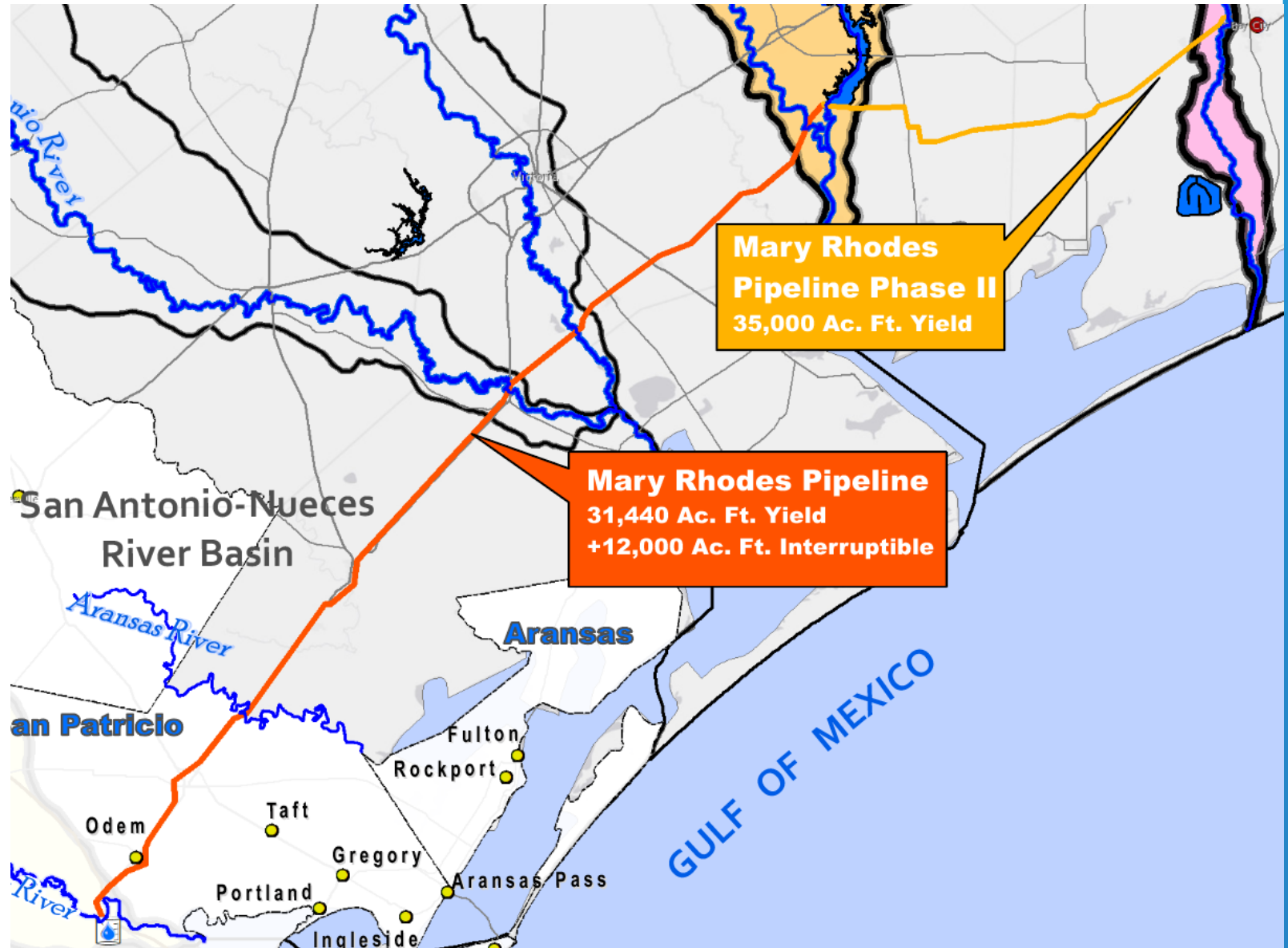
DRAFT

- **Mary Rhodes Pipeline (MRP) I**

- 101-mile-long pipeline running from Lake Texana near Edna, Texas to the O.N. Stevens Water Treatment Plant
- Construction started in 1997, completed in 1998

- **Mary Rhodes Pipeline (MRP) II**

- 42-mile-long pipeline that ties into MRP Phase I at the West Delivery Pump Station
- Construction started in 2014, completed in 2016



MRP Water Sources



Lake Texana/LNRA

MRP I

Contract Minimum Amount Take or Pay: 31,440 acre-ft.

Interruptible A (if available): 4,500 acre-ft.

Interruptible B (if available): 7,500 acre-ft.



Colorado River

MRP II

Run of the River Water Rights: 35,000 acre-ft.

MRP Pump Stations



LNRA Intake Station



Bloomington Pump Station



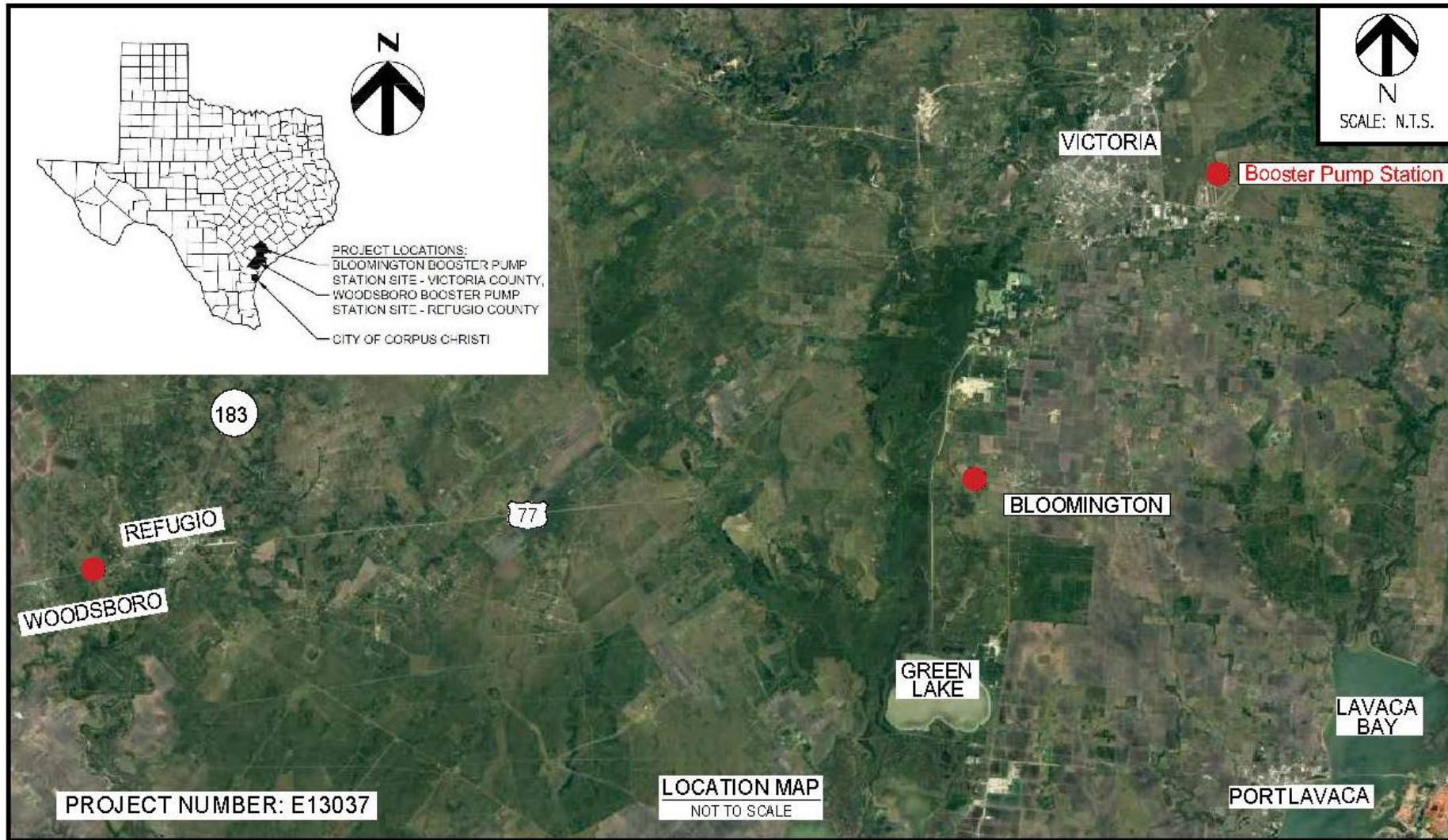
Woodsboro Pump Station



Colorado River Pump Station



Bloomington and Woodsboro Booster Pump Stations



Bloomington Pump Station Improvements



- **Additional horizontal split-case centrifugal pump**
- **Two variable frequency drives**
- **Electric motor valve actuators**
- **Electro-magnetic flow meter with concrete vault**

- **Low voltage emergency generator**
- **HVAC improvements**
- **Instruments and control programming for new pump, pump control valves and flow meters**

Woodsboro Pump Station Improvements



- **One variable frequency drive**
- **Electric motor valve actuators**
- **Electro-magnetic flow meter and concrete vault**
- **Low voltage emergency generator**
- **HVAC improvements**
- **Instruments and control programming for new pumps, pump control valves and flow meters**

Competitive Solicitation and Funding

- **Request for Bids issued February 12, 2024**
 - **City received five contractor submissions**
 - **The first few bidders failed to demonstrate qualified project experience**
 - **Project was rebid**
- **Project re-advertised for bids on June 10, 2024**
 - **City received five contractor submissions**
 - **Two contractors that bid were determined to be non-responsive with failure to demonstrate sufficient experience and failure to provide favorable references**
 - **After reviewing it was determined that H&S Constructors, Inc., is the lowest responsive and responsible bidder**
- **Project cost - \$12,174,975.00 from FY 2025 Raw Water Capital Fund**

Staff Recommendation

- Staff recommends awarding a construction contract to H&S Constructors, Inc., for the Mary Rhodes Pipeline System Improvements (Bloomington and Woodsboro Booster Pump Stations) project in the amount of **\$12,174,975.00**
- Construction duration is planned for **15 months** from issuance of Notice to Proceed to begin construction in November 2024

2022-2024	2024	2024-2026
Janurary - January	February - October	November - February
Design	Bid/Rebid/Award	Construction

The top half of the slide features four horizontal, wavy bands of varying shades of blue, creating a water-like effect. The bands are set against a white background.

Thank you!

The logo for Corpus Christi Water (CCW) features the letters 'CCW' in a bold, blue, sans-serif font. The letters are filled with a wavy pattern of blue and cyan, matching the decorative lines at the top of the slide.

Corpus
Christi WaterSM
Serving the Coastal Bend