



# Corpus Christi Transportation Master Plan (MobilityCC) Amendment



## Kings Lake West Development

**Proposed modification to a C3 Collector and an A2 Arterial  
(northeast of intersection County Road 43 and County Road 22)**



Planning Commission Presentation  
Feb 19, 2025

# EXISTING TRANSPORTATION PLAN



# DEVELOPER'S PROPOSED TRANSPORTATION PLAN










WEBER (FM 43)

CROSTOWN (HWY 286)

CR 22

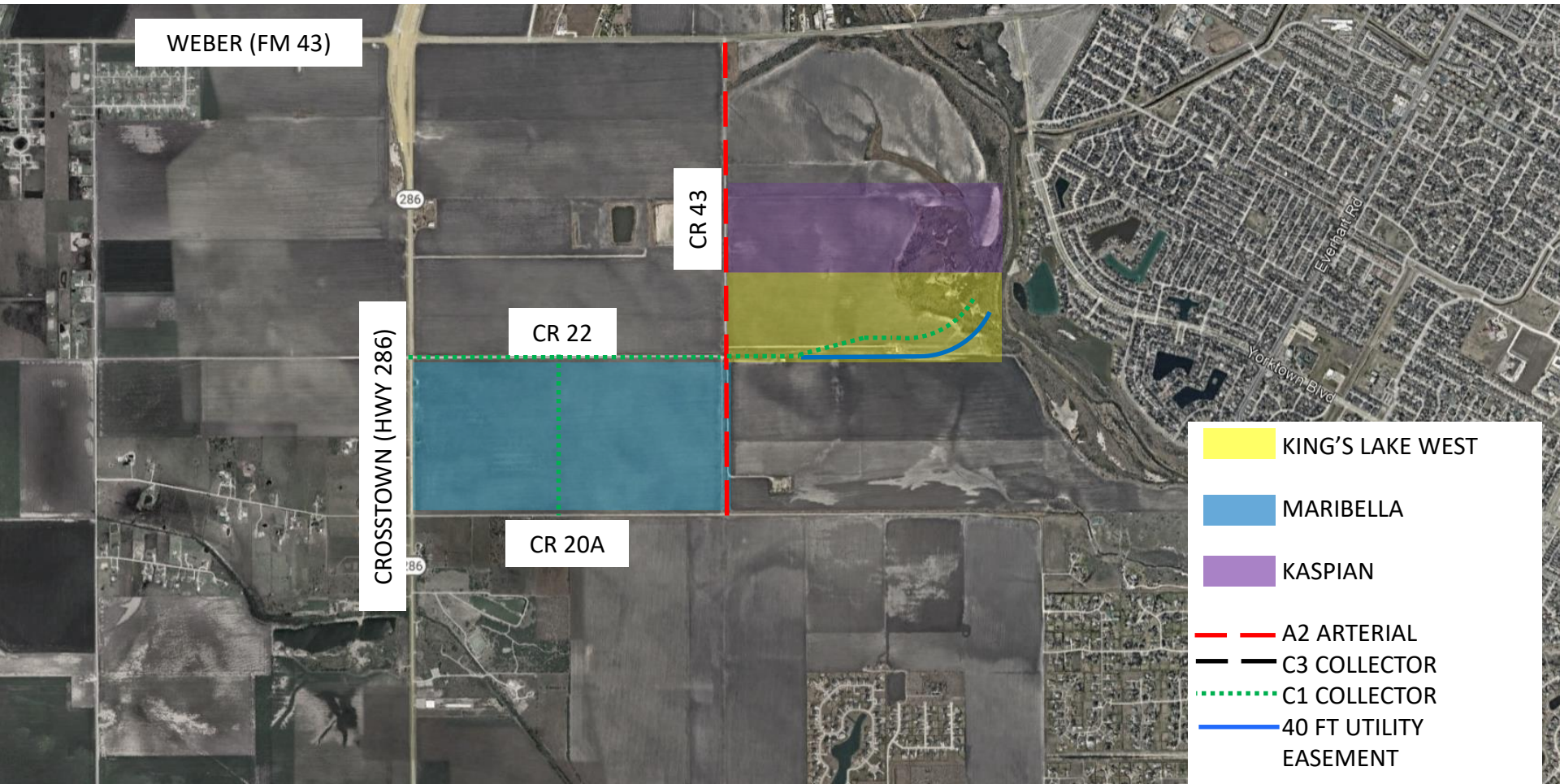
CR 20A

CR 43

-  KING'S LAKE WEST
-  MARIBELLA
-  KASPIAN
-  A2 ARTERIAL
-  C3 COLLECTOR
-  C1 COLLECTOR
-  40 FT UTILITY EASEMENT



# CITY'S RECOMMENDED TRANSPORTATION PLAN





# Background

---



- Developer provided a Traffic Impact Analysis addressing impacts, mitigation measures and proposed transportation plan amendments.
- Proposed development will consist of the following:
  - 502 single-family residential dwelling units
  - full build-out by 2028



# Transportation Plan Amendment



## KING'S LAKE WEST Level 1 Traffic Impact Analysis

### Roadway Classifications

The roadway classifications were determined based on the estimated daily traffic volumes. **There will be two roadway amendments on Urban Transportation Plan inside the site or on frontage.** Each amendment is shown as follows:

1. **CR 22/ Mitford Castle Drive (from the intersection at CR 43 to Oso Parkway)** – This segment, approximately 1,210 feet, was originally identified as C3 (Primary Collector). The segment will be re-aligned and extended into the development, terminating at the intersection with Oso Parkway. This road will be constructed with curvature transition in the southwest of the development. The roadway, after transition, is approximately 110 feet north of the originally planned County Road 22 extension.
  - o With a C1 (Minor Residential Collector) design capacity of 3,000 vehicles per day (vpd), the C1 will be sufficient to serve the daily traffic of 2,840 vpd for the south of development (60% of 4,734 King's Lake West daily site trips).
2. **CR 43 (from the intersection at CR 22 to boundary with Kaspian)** – This segment, approximately 3,510 feet, was originally identified as A2 (Secondary Arterial). This segment will continue to north to Kaspian development, which will be built by Kaspian development.
  - o With a C1 design capacity of 3,000 vpd, the Collector will be sufficient to serve 2,391 vpd (25% of 4,734 King's Lake West daily site trips and 35 % of 3,451 Kaspian daily site trips) on the frontage for the development.

Therefore, Collector 1 (C1) design capacity is sufficient to serve the CR 22 and CR 43. Oso Parkway follows the roadway plan as P1. The other internal streets follow the roadway capacity per city code. Roadway Classifications are shown in **Figure 10**.



# Recommendation

---



City Staff recommends the following:

- CR 22 (east/west) – reduce from a C3 collector to a C1 collector
- CR 43 (north/south) – to remain an A2 arterial