



Zoning Case #0115-01

The Convent Academy of the Incarnate Word

From: "RS-6" Single-Family 6 District
To: "RM-1" Multifamily 1 District

Planning Commission
Presentation
January 14, 2015

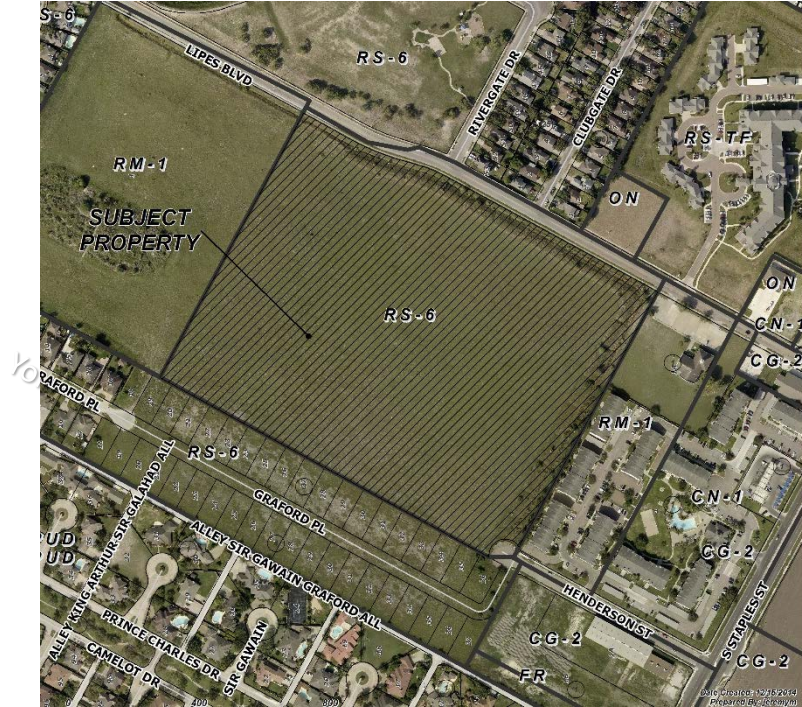


Aerial Overview



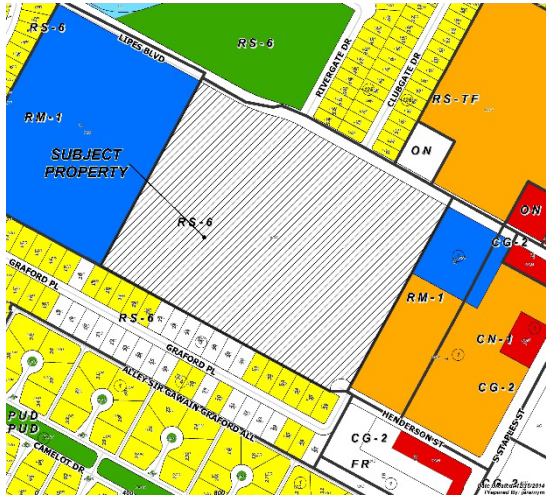


Aerial

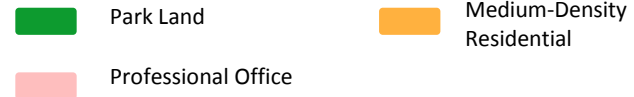
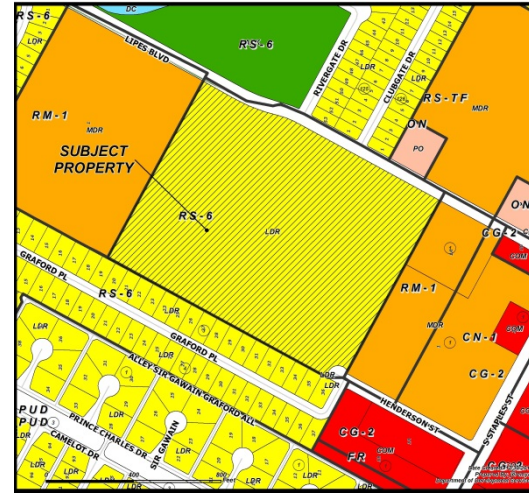




Existing Land Use

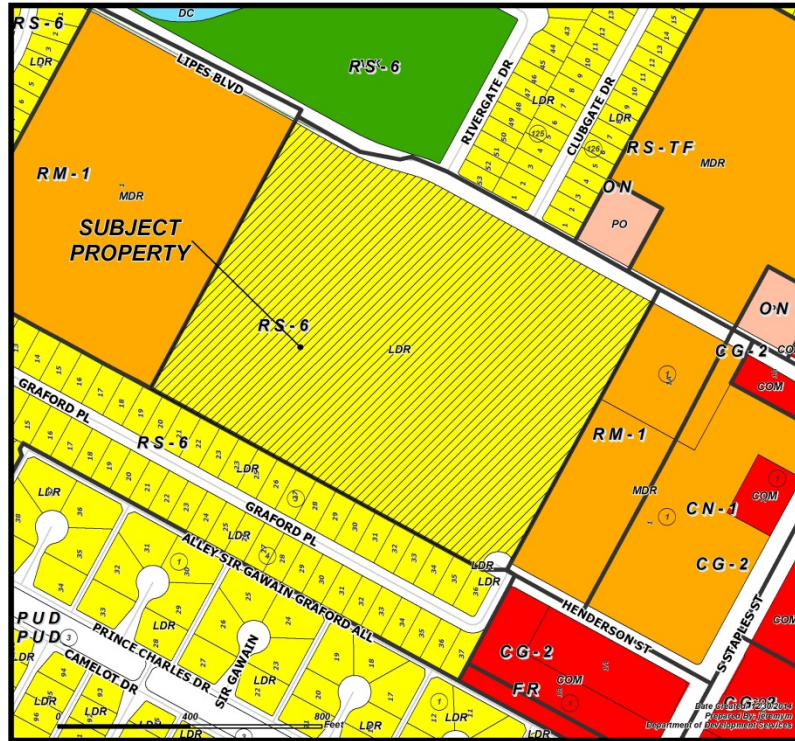


Future Land Use





Future Land Use Map





Pictures

South Across Lipes Blvd.





Pictures

Apartments East of Property





Pictures

Convent West of Property Along Lipas Blvd.





Pictures

Park Across Lipes Blvd. from Property





Public Notification

58 Notices mailed inside 200' buffer
10 Notices mailed outside 200' buffer

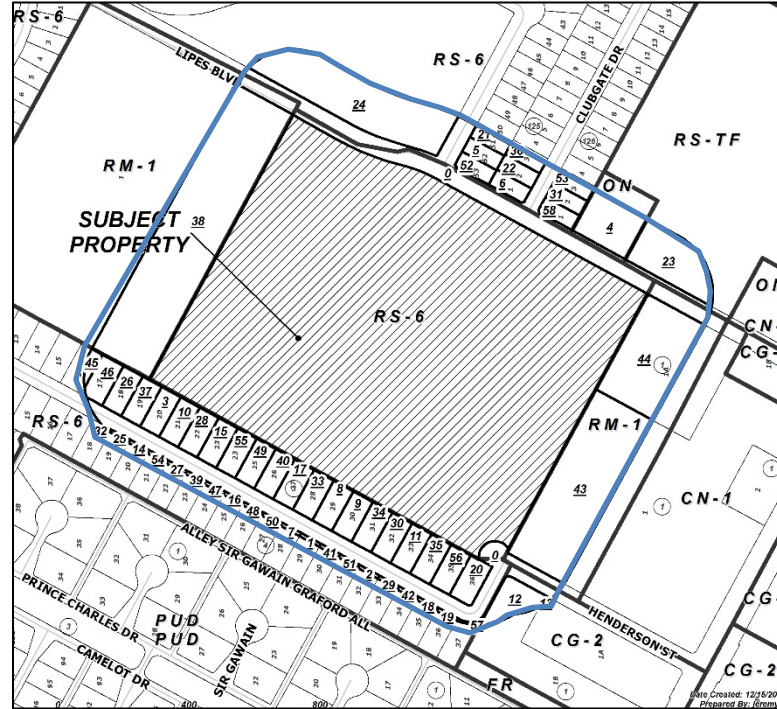
Notification Area



Opposed: 0



In Favor: 0





Staff Recommendation

Approval of the "RM-1" Multifamily 1 District